



W O R K . L I V E . P L A Y . C A R E

HEALTHCARE PROFILE

OFIS STORY



Whether it's a new **office** in Dubai Media City designed to spark the team's creativity, a boutique **hotel** in Fujairah that has a story to tell, a smart **school** in Sharjah designed to boost the kids' curiosity or a **clinic** in Abu Dhabi designed to truly foster well-being

We've got you covered.



ESAG



Easa Saleh Al Gurg Group LLC (ESAG) is a multidivisional conglomerate with 28 companies, including OFIS.

Established in 1960 by H.E. Easa Saleh Al Gurg, ESAG is ranked among top 5 Emirati family-owned businesses with 0% debt. It comprises range of diverse product and business interests that include retail, building and construction, industrial and joint ventures.

Portfolio of exclusive brands includes Siemens, British American Tobacco, Dunlop, Armitage Shanks, Viking Johnson, SieMatic, Danfoss, Zanussi, Interface, Smeg, Unilever and 3M among others.

OFIS



A MEMBER OF
EASA SALEH AL GURG
GROUP



PURPOSE



We don't want to just be the **leading furniture and flooring supplier**. We believe that our purpose is a lot more than supplying you with a pretty, task chair in a box.

We don't want to just be **out-of-the-box thinkers**. We think about spaces as a whole, both inside and out.

We are not just a **one-stop solution provider**. We need to collaborate with you to help find the right products that will work best in the spaces you design.

We are not just a **home for the best global brands**. We are proud that we've been in the UAE for the past 33 years to witness and contribute to the growth of the country we call home.



KEY SECTORS

○

WORKPLACE

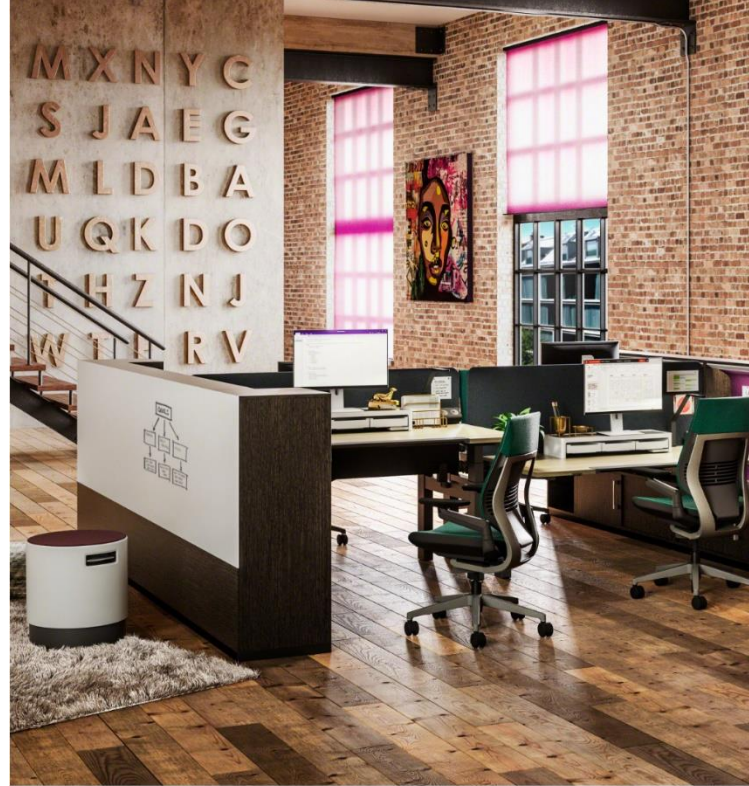
HOSPITALITY

EDUCATION

HEALTHCARE

○

CFIS



PARTNERS



We believe in the **power of diversity** and that only with the right partners, ideas can evolve.

The brands we represent are not only leaders in their respective sectors, but also innovators and advocates of **corporate social responsibility** and **environmental sustainability**.

OFIS team believes that interiors should inspire, creating human-centric spaces for the people who will inhabit them. Through appealing aesthetics and thoughtful ergonomics, our brands have a strong commitment to provide customers with truly sustainable and innovative products.

FURNITURE



Steelcase

dvo_

Bolia.com
NEW SCANDINAVIAN DESIGN

//Benel

ARESLINE
INNOVATIVE SEATING SYSTEMS

boss
design

Steelcase
HEALTH

Steelcase
EDUCATION

ERGOTRON®

coalesse®

okamura

DAUPHIN

l:l:l:l

kastel

■ Diemme

FLOORING



Interface®

Gerflor
the flooring group

HALBMOND
TEPPICHWERKE

Brintons

HEALTHCARE FURNITURE



NURSE STATIONS

RADIOLOGY ROOMS

ONCOLOGY ROOMS

EXAMINATION ROOMS

WORK TOOLS AND CARTS

PATIENT ROOM CASE GOODS

CFIS



Sync nurse station from Steelcase Health

Steelcase



Furniture brand that can truly make the difference in the healthcare spaces you design

NURSE STATIONS

RADIOLOGY ROOMS

ONCOLOGY ROOMS

EXAMINATION ROOMS

WORK TOOLS AND CARTS

PATIENT ROOM CASE GOODS



*Lead time: 10-12 weeks
Warranty: 8 years*

*Country of Origin:
US & Europe*



Await lounge system | Coalesse - Steelcase Health



PATIENT ROOMS

When the elements of people, place and technology are holistically considered the result can be patient rooms that effectively connect people and information.

Surround is designed to accommodate the critical roles the family plays in the hospital room. It's modular and integrated design is flexible, and easily reconfigured.

EXAM SPACES

Exam rooms today must be hardworking, high-functioning spaces that support the activities, interactions and technologies that sustain connected, satisfying and effective health experiences.

Node with ShareSurface is designed to foster a better shared healthcare experience for clinicians, patients and family members.





TRANSITION SPACES

Transition spaces are a significant opportunity for improving the healthcare experience by providing more choices and supporting a range of postures and activities.

Regard, a lounge system is designed to support the transition moments throughout the healthcare journey.



NURSE STATIONS

For clinicians, work is more of a process than a place. They often improvise with any available space and surface, whether or not it is suited to the type of work at hand.

Sync workstations facilitate collaboration between colleagues, connection to patients and access to the technologies and information vital to quality care.



STEELCASE PRODUCT HIGHLIGHTS



Seating | guest + lounge



Alight™ by turnstone



Aspekt™ by Steelcase Health



Await™ by Coalesse



Bindu™ by Coalesse



Bob™ by Coalesse



Brody™ by Steelcase



Cura™ by Steelcase Health



Enea® by Coalesse

Seating | guest + lounge



Enea Lottus™ by Coalesse



i2i® by Steelcase



Jenny® by turnstone



Lagunitas™ by Coalesse



Leela™ by Steelcase Health



Lincoln by turnstone



Lox™ by Steelcase



Malibu™ by Steelcase Health

Seating | guest + lounge



media:scape® Lounge by Steelcase



Mitra® by Steelcase Health



Move™ by Steelcase



Neighbor™ by Steelcase Health



Outlook Empress™



Outlook Hawthorne™



Outlook Jarrah™



Outlook Nikko™



Outlook Sequoia™

Seating | guest +lounge



Player® by Steelcase



Regard™ by Steelcase Health



Ripple™ by Coalesse



Sieste® by Steelcase Health



Snodgrass by Steelcase



Sorrel™ by Steelcase Health



Tava™ by Steelcase Health

Seating | recliners



Empath™ by Steelcase Health



Mineral™ by Steelcase Health



Mitra® by Steelcase Health

Seating | sleepers



Mitra® Sleeper Seating
by Steelcase Health



Sieste® Sleeper Sofa
by Steelcase Health



X-tenz™ Sleeper Chairs
by Steelcase Health

Seating | task



Amia® by Steelcase



Cachet® by Steelcase



cobi® by Steelcase



Criterion® by Steelcase



Gesture™ by Steelcase



Leap® by Steelcase



Qivi™ by Steelcase



Shortcut by turnstone

Seating | task



Think™ by Steelcase



Verge™ by Steelcase Health

Casegoods | modular



Folio™ by Steelcase Health



Opus® by Steelcase Health



Sonata™ by Steelcase Health



Sync™ by Steelcase Health

Casegoods | freestanding



Ainsley™ by Steelcase Health



Davenport™ by Steelcase Health



Park by Steelcase Health



Senza™ by Steelcase Health

Desk systems + storage



Answer® by Steelcase



c:scape® by Steelcase



Duo™ by Steelcase



Elective Elements® by Steelcase



FlexFrame™ by Steelcase



FrameOne™ by Steelcase



Montage® by Steelcase



Universal Storage by Steelcase

Tables + carts



Airtouch® by Steelcase



Bob™ Table by Coalesse



Campfire™ Paper Table
by turnstone



Campfire™ Slim Table
by turnstone



Enea Lottus™ Table by Coalesse



Exchange™ by Steelcase Health



Groupwork® by Steelcase



Jenny® Table by turnstone

Tables + carts



Mobile Overbed Tables
by Steelcase Health



Opus™ Overbed Table
by Steelcase Health



Pocket® by Steelcase Health



SW_1 Table by Coalesse



Series 7 by Steelcase



Trees™ by Coalesse



Walkstation by Steelcase

Technology



media:scape® by Steelcase



media:scape® mini by Steelcase



media:scape® TeamStudio
by Steelcase



RoomWizard® by Steelcase



Thread™ by Steelcase



ERGOTRON PRODUCT HIGHLIGHTS

Wall mount | Ergotron

Medical carts



StyleView® Cart - Sliding Worksurface
Documentation Medical Cart



StyleView® Cart with LCD Pivot



StyleView® Laptop Cart, LiFe Powered



StyleView® Laptop Cart, 1 Drawer (1x1)



StyleView® Telemedicine Cart, Single Monitor, Powered
Mobile Telehealth Workstation



StyleView® Telemedicine Cart, Back-to-Back Monitor, Powered
Mobile Telehealth Workstation



StyleView® Telepresence Cart, Single Monitor

Wall mounts



**StyleView® Sit-Stand Combo
Arm with Worksurface**
Keyboard & Monitor Mount



**StyleView® Sit-Stand Combo
Arm**
Keyboard & Monitor Mount



**StyleView® Sit-Stand Combo
System with Worksurface**
Keyboard & Monitor Mount with Small
CPU Holder



**StyleView® Sit-Stand Vertical
Lift, Patient Room**
Low-Profile Keyboard & Monitor Mount



**StyleView® Sit-Stand Combo
Arm with Worksurface**
Keyboard & Monitor Mount



**StyleView® Sit-Stand Combo
Arm**
Keyboard & Monitor Mount



**StyleView® Sit-Stand Combo
System with Worksurface**
Keyboard & Monitor Mount with Small
CPU Holder

Imaging & Radiology



Neo-Flex® Dual Monitor Wall Mount Two-Monitor Mount

- 28-514-800

Maximize space in imaging environments! This low-profile digital imaging solution enhances PACS implementation by providing convenient access to patient data.



Neo-Flex® Dual WideView WorkSpace Dual-Display Cart

- 24-194-055

Double your view—and move it too! Configure this compact, height-adjustable computer cart to your needs: Flexible open architecture supports a wide range of dual-display configurations and a fleet of accessories. Designed to handle image-intensive applications like radiology and clinical PACS access.

Benel



A brand that will help you create workspaces to bring out the best in people.

Benel is a Singaporean brand with production in Malaysia, focused on making furniture that serves its purpose and the well-being at competitive prices.

Its collections include workstations, benching, booths, chairs and soft seating with multiple options and ways you can dress the furniture.



Lead time: 8-10 weeks

Warranty: 5 years

Country of origin: Singapore





Lounge seating | Benel

FLOORING SOLUTIONS

CARPET TILES

LUXURY VINYL TILES

LINOLEUM FLOORING

BROADLOOM CARPETS



Gerflor

When you need eco-friendly flooring for your next hospital or clinic project that looks good, but can stand the test of time

High stain resistance to chemicals commonly used in healthcare

100% recyclable

Extremely Low Volatile Organic

Compound (VOC) emissions

Suitable for heavy traffic areas, group T wear rating

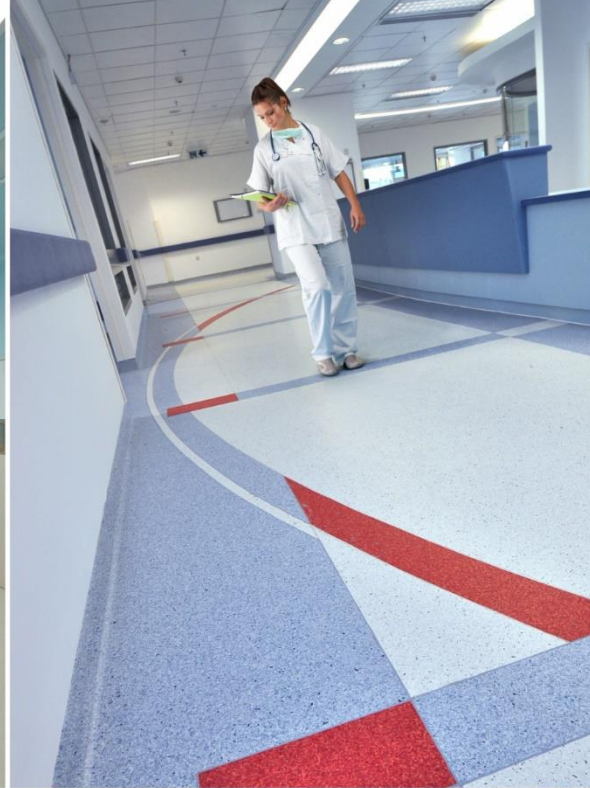
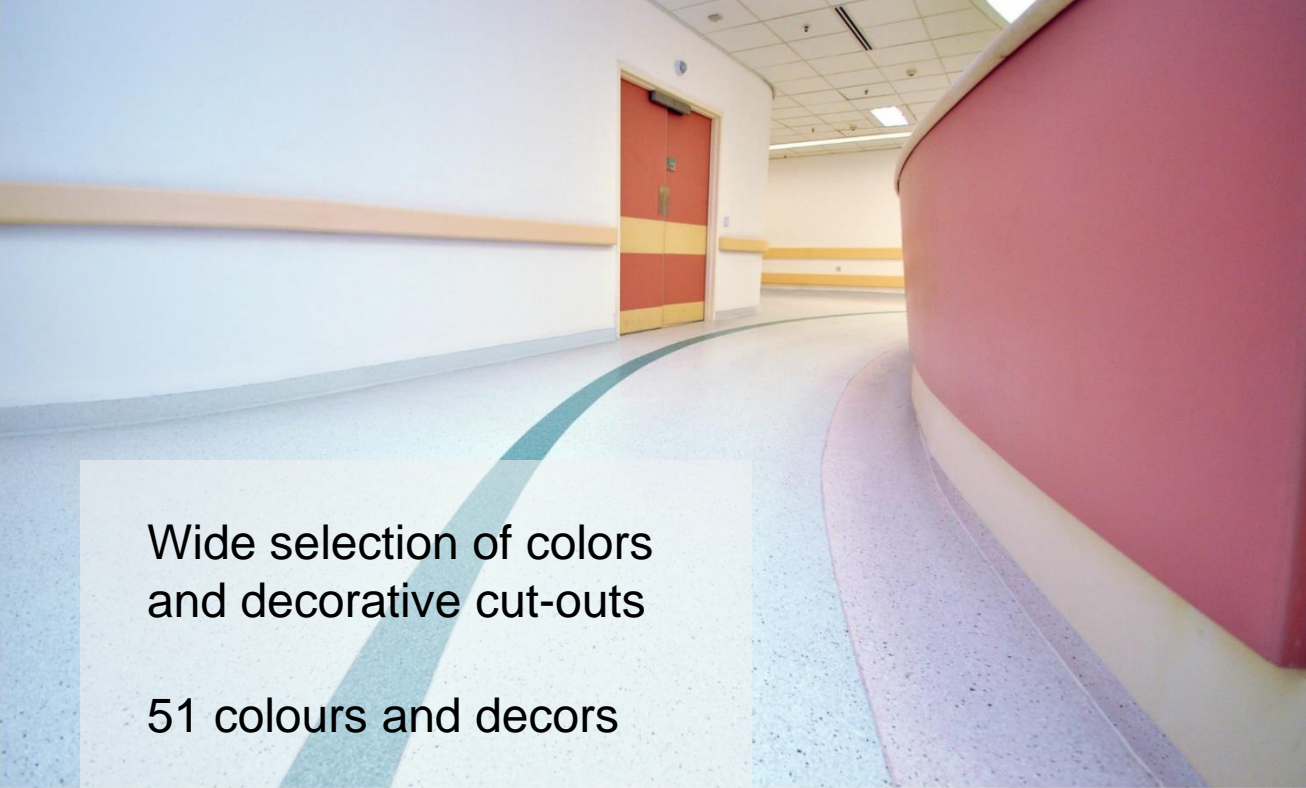
Lead time: 6-8 weeks

Warranty: 10 years

Country of origin:

France



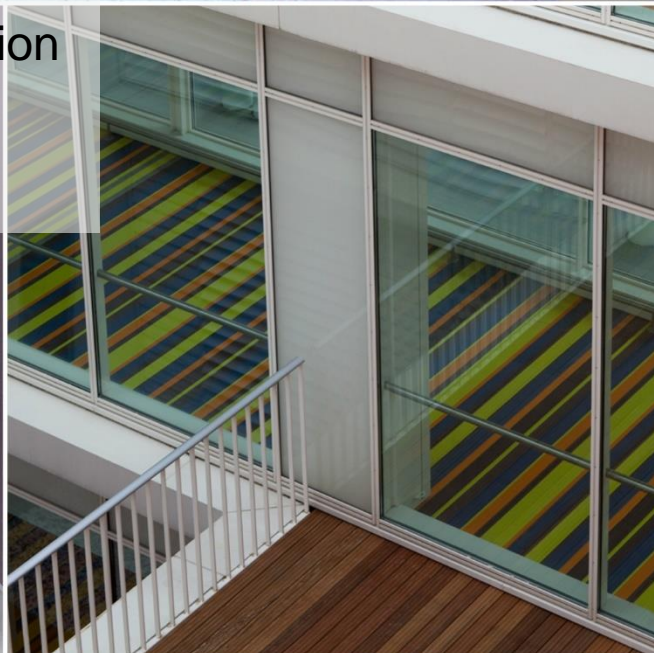
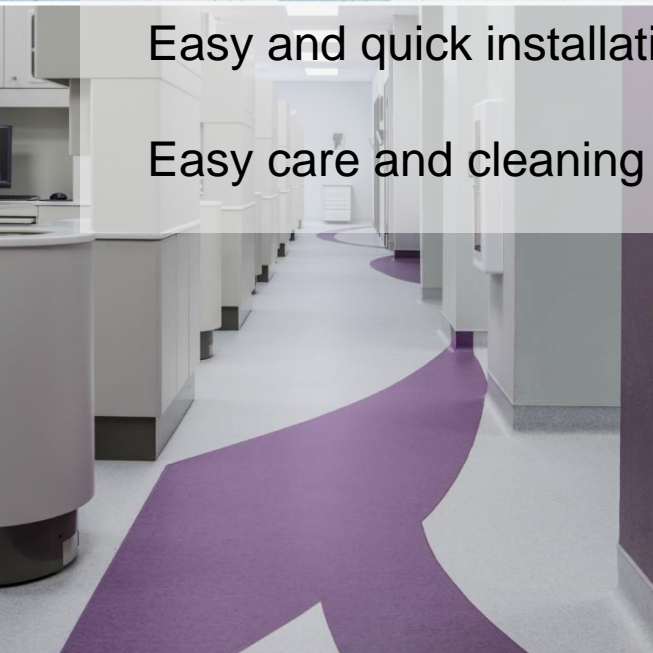



Wide selection of colors
and decorative cut-outs

51 colours and decors

Easy and quick installation

Easy care and cleaning





100% antibacterial (reports by
Nosoco.tech)

100% decontaminable (tests by
Anios and Institut Pasteur)

100% watertight with the hot-welded
Decochoc / vinyl loor system



WALL PROTECTION

Gerflor supply a range of vinyl wall coverings and finishes including wall protection, handrails, door protection and more ideal for healthcare environments



HANDRAILS

Designed to aid mobility, ergonomically designed providing both visual guidance and wall protection with excellent protection against hand-borne infection

Interface

*Helping create better, brighter
healing environments*

Interface modular carpet tile features a unique combination of structured backing and a dense textile face to help minimize noise.

Enable quick, easy renovations and maintenance.

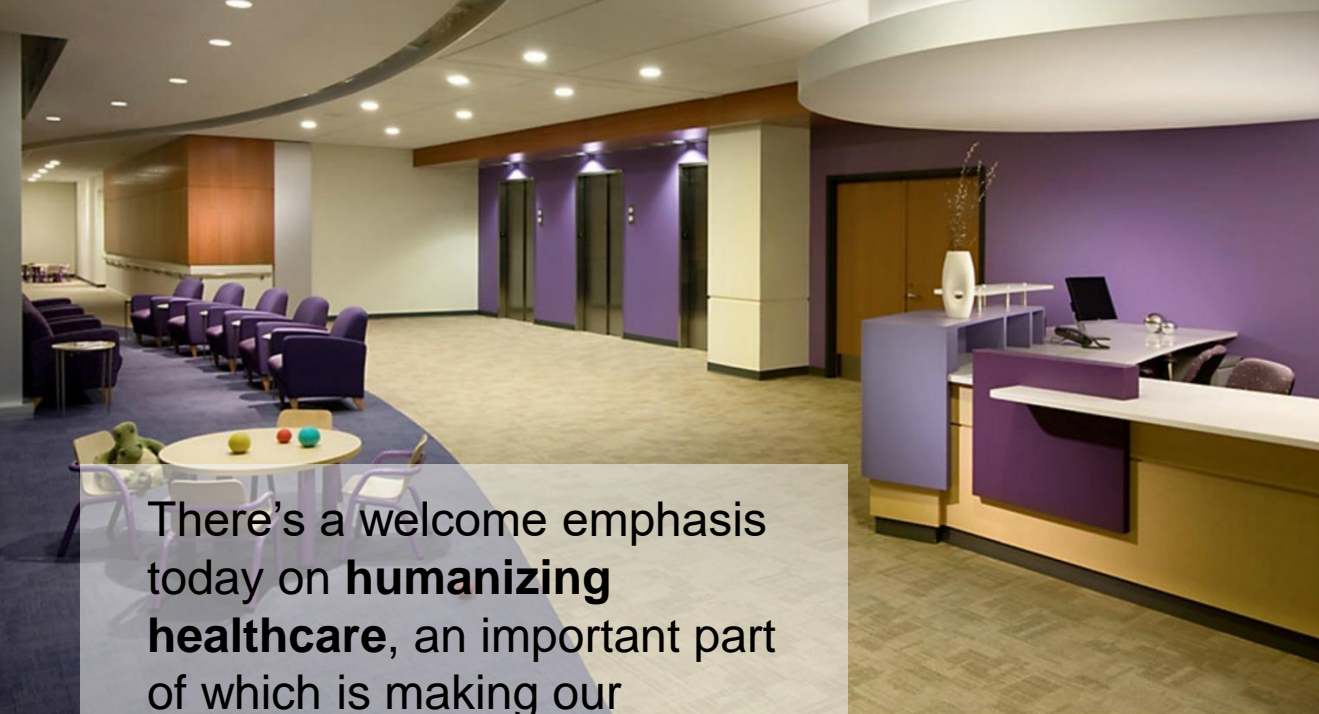
Easy to maintain with superior stain resistance.

Its proprietary preservative, Intersept®, keeps odors and mold at bay.

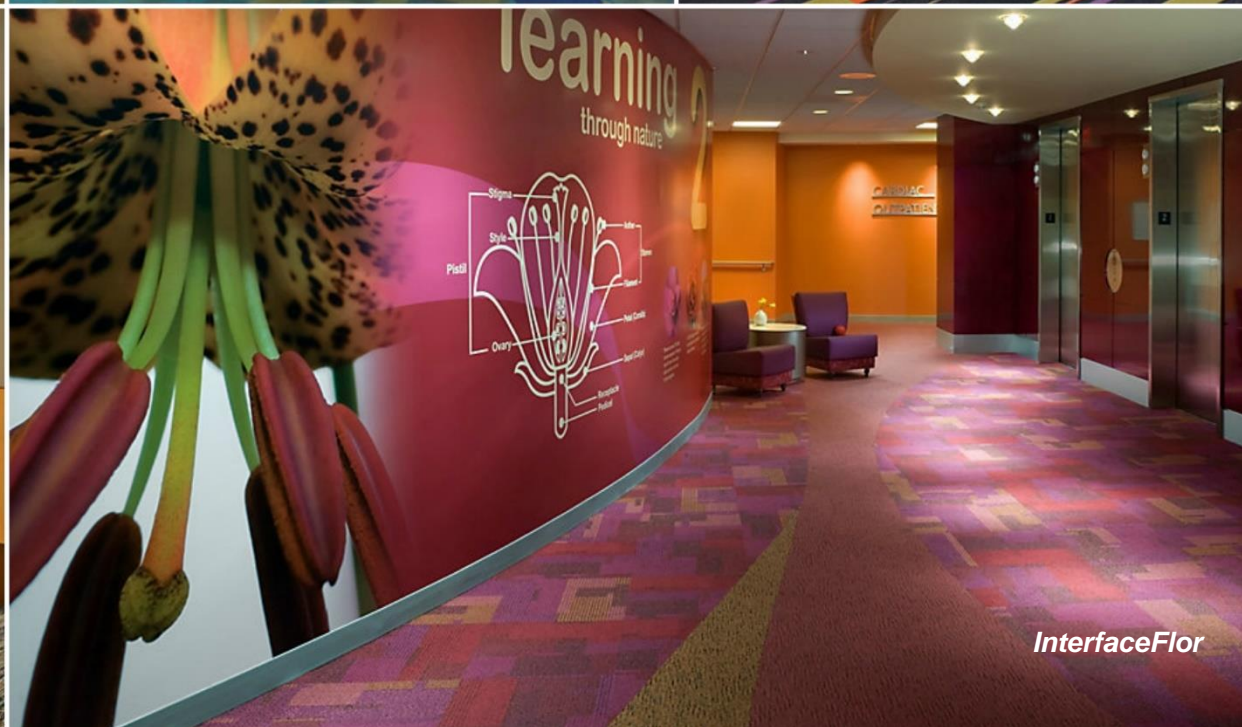
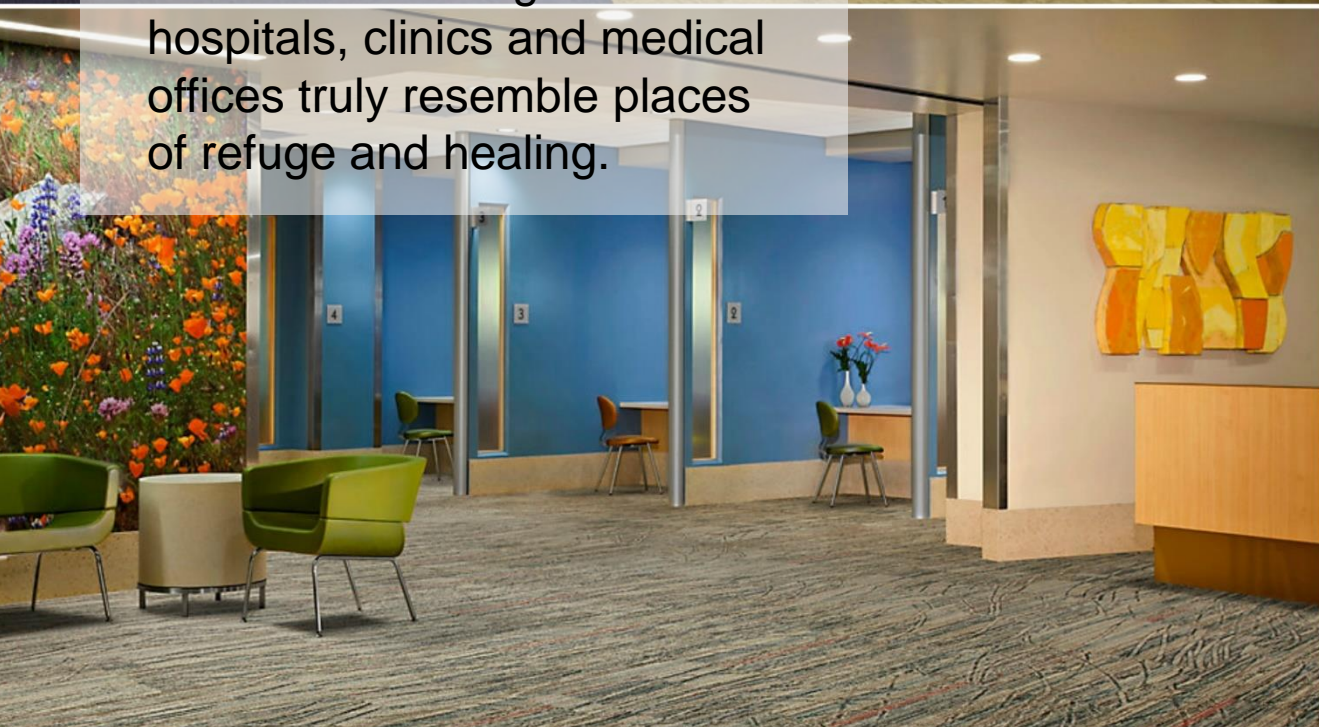
*Lead time: 6-8 weeks Country of origin:
Warranty: 15 years Holland*




Collection Pietra; product Bertola | Interface



There's a welcome emphasis today on **humanizing healthcare**, an important part of which is making our hospitals, clinics and medical offices truly resemble places of refuge and healing.





Interface is a huge advocate of **biophilic design** and recognizes how critical it is to human health to incorporate nature into the spaces we inhabit.

Installation - TacTiles



IT REDUCES ENVIRONMENTAL
IMPACT BY 90%

NO VOC EMISSIONS

CLEAN, EASY TO INSTALL

NO DAMAGE TO SUBFLOOR

PERFECT FOR RUG OR FEATURE
AREAS

EASY TO RECYCLE TILES



OFFICE FURNITURE



EXECUTIVE SPACE

WORKSTATIONS

CHAIRS

LOUNGE SEATING

CONFERENCING



Airtouch height-adjustable desk, Gesture task chair & Buoy stool from Steelcase

HOSPITALITY FURNITURE



SOFAS & ARM CHAIRS

STOOL & BAR TABLES

COFFEE & SIDE TABLES

STORAGE & SHELVES

ACCESSORIES



not another sofa.



EDUCATION FURNITURE



CLASSROOMS

TEACHER'S DESKS

LIBRARY

PROJECT ROOMS



SERVICES



We support **layouts with insights.**

Our in-house design team of interior designers and architects provides design solutions for a broad range of projects across the commercial sectors using the latest software and technology.

SPACE PLANNING

MOCK-UPS

SPECIFICATIONS

TENDER PACKAGES

WORKSHOPS

VALUE ENGINEERING

3D MAX, PCON &
CET RENDERS

WAREHOUSING

SITE-VISITS

DELIVERY &
INSTALLATION



Massaud Lounge from Coalesse | Steelcase

OFIS TEAM



We have 80+ people in our team with years of professional experience but we also believe that work hard | play hard is more than a cliché, it's a lifestyle.

From rock guitar players to cupcake decorators to pet lovers, recreational hunters and motorbike fans, our creative pursuits are diverse.

Rest assured.



Ali Maarrawi

General Manager

ali.maarrawi@ofisuae.com



Marina Petrovic

**Divisional Manager-
Furniture**

marina.petrovic@ofisuae.com



Fawaz Mohammed

**Divisional Manager-
Flooring**

fawaaz.m@ofisuae.com



Ramesh R

Product Manager

ramesh@ofisuae.com



David Blabolil

Specification Manager

david.b@ofisuae.com



Feven Tekle

Office Manager

feven.t@ofisuae.com



+971 4 3563 700



customer@ofisuae.com



www.ofisuae.com



CONNECT WITH US



instagram.com/ofisuae



facebook.com/ofisuae



linkedin.com/company/ofis-uae

