

# Workbook 2018





# Workbook 2018

PASSION LE

# Contents



Changing things for good.	<b>2</b>
+Positive spaces™ happier people.	<b>4</b>
A sustainable foundation.	<b>6</b>
Happy guests, naturally.	<b>8</b>
Edge to edge perfection.	<b>10</b>
Product portfolio.	<b>14</b>
Index.	<b>236</b>

# Changing things for good.

## Can flooring really change the planet for good?

At Interface, we know it can. Better, more sustainable flooring means a healthier environment – for the people using the space and the world as a whole.

That's why we're eliminating any negative impact Interface has on the environment by 2020. We call it Mission Zero. And as 2020 draws closer, we're on track to achieve this goal.

But here at Interface, we never rest on our laurels. We strive to replace any negative environmental impact with a positive one. It's time to create a Climate Fit for Life. It's time for Climate Take Back®

We need to revolutionise our attitudes to climate change. Because carbon's not a crisis. It's an opportunity.

We need to transform how businesses think about, and use, carbon – moving beyond carbon-neutral, to carbon-negative. Climate Take Back is about sparking that revolution.

Take our new carbon-capturing Proof Positive tile. It's just one of the ways we're showing what's possible when we think differently.

Now, we need more people around the world to open up to this new perspective and make a change for good.

### Will you join us?

Find out how at [www.interface.com](http://www.interface.com)

[#ClimateTakeBack](https://twitter.com/ClimateTakeBack)









# +Positive spaces™ happier people.

## What makes a +Positive space?

For pupils with autism at a London school, it's a space that helps them feel safe.

For university students in Den Bosch, The Netherlands, it's a space that promotes focus and aids learning.

For app designers at Yelp, it's an inspiring space that sparks creativity.

Ultimately, a +Positive space is where people feel good doing what they need to do. Whatever that may be, we've got modular flooring to suit.

Discover stories about our +Positive spaces at [interface.com/positivespaces](https://interface.com/positivespaces)

What does +Positive space mean for you? Let us know on Twitter [interf.ac/twitter\\_ps](https://twitter.com/interf_ac/twitter_ps)



# A sustainable foundation.

## Whatever your needs, we have top-quality floor tile backings to suit you.

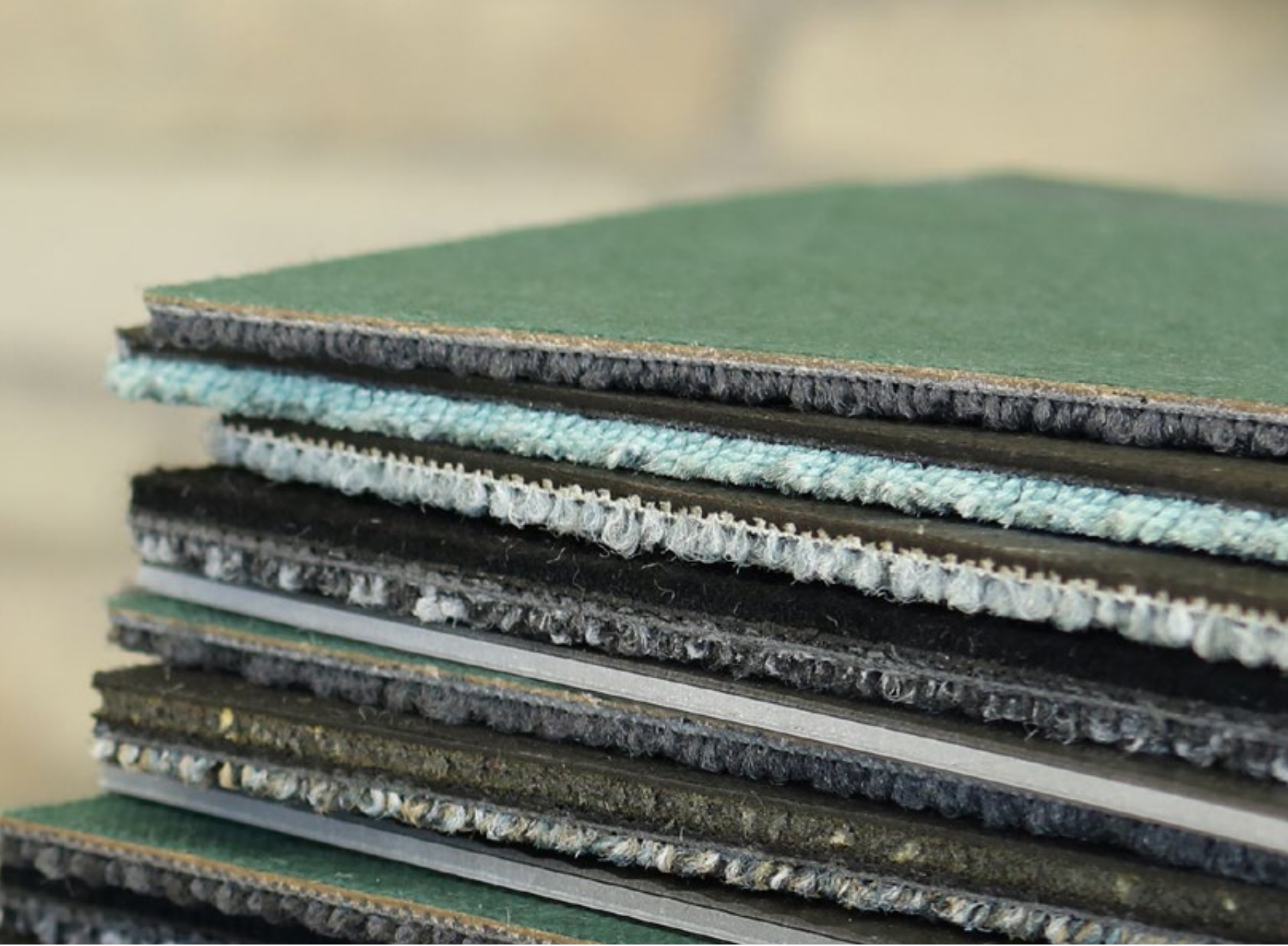
Our Graphlex® backing, which comes as default on our tiles, is a great blend of functionality and sustainability.

For the most sustainable and environmentally-friendly backing on the market, choose CircuitBac Green. Made with up to 87% biobased and recycled materials, tiles using CircuitBac Green have a much lower carbon footprint than the average carpet tile.

A wide selection of our flooring is available with this eco-friendly backing. And with fibreglass reinforcement, CircuitBac Green is just as durable as our other backings. There's no better foundation for your +Positive spaces.

Explore all of our available backings [interface.com/backings](https://www.interface.com/backings)





# Happy guests, naturally.

In 2015, we launched the Human Spaces report into the Global Impact of Biophilic Design in the Workplace.

It revealed that employees who work in environments with natural elements report a 15% higher level of wellbeing, are 6% more productive and 15% more creative overall.

As humans, we're drawn to nature. Given the choice, we'd all choose a room with a view, particularly of water, over one without.

But do natural design elements indoors have an effect on how we behave as hotel guests? Together with Terrapin Bright Green, we set out to understand how biophilic design can enhance the guest experience.

Our new report shows that, on average, 36% of hotel guests spend time in lobbies with natural design elements, compared to just 25% in those without. And as hoteliers know, more time spent is more money spent.

Guests staying in biophilic hotels were also twice as likely to use the word 'experience' in their reviews.

Download the full Human Spaces 2.0: Biophilic Design in Hospitality report at [blog.interface.com](http://blog.interface.com)





UR 101 - 327116 SAGE/MOSS, UR102 - 327106 SAGE, UR103 - 327122 MOSS  
INSTALLED: DESIGN BY TILE

# Edge to edge perfection.

Beautiful design. Easy installation. Unrivalled durability. Meet the Luxury Vinyl Tile – the latest addition to our product family.

No other flooring type gives you the flexibility to mix and match or make easy replacements like Interface's modular tiles. Our LVT is available in classic square or Skinny Plank format. With glue-free TacTiles® – and no need for transition strips – it couldn't be simpler to create seamless carpet tile and LVT combinations.

What's more, Sound Choice™ backing effectively dampens impact sound – so well, in fact, that we've earned the Quiet Mark™ from the noise abatement society.

Look out for more innovations for your +Positive spaces coming in 2018 and beyond.

Explore our LVT collection at [interface.com/lvt-emea](https://interface.com/lvt-emea)







LEVEL SET NATURAL WOODGRAINS - A00204 BEECH INSTALLED: ASHLAR  
UR102 - 327103 GRANITE INSTALLED: NON DIRECTIONAL



A white rectangular sign is mounted on a wall of horizontal wooden planks. The sign features the words "HELLO" and "BEAUTIFUL" in a bold, teal, sans-serif font, arranged in two lines. The letters have a slightly distressed or hand-painted appearance. The sign is secured with small black fasteners at the corners and midpoints of the top and bottom edges.

HELLO  
BEAUTIFUL





# Luxury Vinyl Tile

## Studio Set



A00701 SILVERLIGHT



A00702 PEWTER



A00703 PEPPER



A00705 TITANIUM



A00706 MUSHROOM



A00707 LIME



A00708 IRIS



A00709 OCEAN



A00710 POPPY



A00711 MANDARIN



A00712 MARIGOLD



A00713 SLATE

## Specification

Backing	Sound Choice™ Acoustic Backing
Finish	Ceramor™ - UV Stabilized Ceramic Bead Coating
Product Definition	High Performance Luxury Vinyl Tile
Wear Layer Thickness	0.55 mm (EN ISO 24340)
Total Weight	6700 g/m <sup>2</sup> (EN ISO 23997)
Total Thickness	4.5 mm (EN ISO 24346)
Wear Classification	EN ISO 10874 33 Heavy Commercial / 42 General Light Industrial
Radiant Panel	Euroclass Bfl s1 (EN 13501-1)
Castor Chair	Pass (ISO 4918 / EN425)
Impact Sound Insulation ( $\Delta L_w$ )	16 dB (EN ISO 10140-3)
Abrasion Resistance	Group T (EN 660-2)
Packaging	2.5 m <sup>2</sup>



Ashlar Herringbone







STUDIO SET - A00703 PEPPER, A00707 LIME, A00712 MARIGOLD, A00709 OCEAN  
INSTALLED BY: ASHLAR

# Luxury Vinyl Tile

## Boundary Metallics



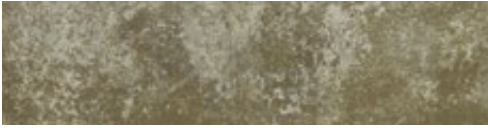
A00601 DAYLIGHT



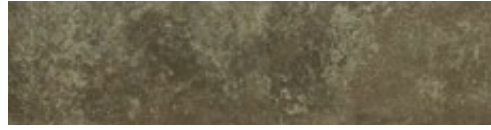
A00605 FAWN



A00606 ECLIPSE



A00607 DESERT SHADOW



A00608 EVENING DUSK



A00609 MORNING MIST

## Specification

Backing	Sound Choice™ Acoustic Backing
Finish	Ceramor™ - UV Stabilized Ceramic Bead Coating
Product Definition	High Performance Luxury Vinyl Tile
Wear Layer Thickness	0.55 mm (EN ISO 24340)
Total Weight	6700 g/m <sup>2</sup> (EN ISO 23997)
Total Thickness	4.5 mm (EN ISO 24346)
Wear Classification	EN ISO 10874 33 Heavy Commercial / 42 General Light Industrial
Radiant Panel	Euroclass Bfl s1 (EN 13501-1)
Castor Chair	Pass (ISO 4918 / EN425)
Impact Sound Insulation ( $\Delta L_w$ )	16 dB (EN ISO 10140-3)
Abrasion Resistance	Group T (EN 660-2)
Packaging	2.5 m <sup>2</sup>





BOUNDARY METALLICS - A00607 DESERT SHADOW, A00608 EVENING DUSK  
INSTALLED: ASHLAR



# Luxury Vinyl Tile

## Level Set® Collection - Natural Woodgrains



A00201 BLACK WALNUT



A00203 CHESTNUT



A00204 BEECH



A00205 STORM



A00206 WINTER GREY



A00207 WASHED WHEAT



A00208 SAND DUNE



A00210 TEAK



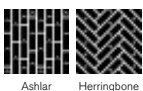
A00212 CEDAR



A00213 COASTAL BLACK

## Specification

Backing	Sound Choice™ Acoustic Backing
Finish	Ceramor™ - UV Stabilized Ceramic Bead Coating
Product Definition	High Performance Luxury Vinyl Tile
Wear Layer Thickness	0.55 mm (EN ISO 24340)
Total Weight	6700 g/m <sup>2</sup> (EN ISO 23997)
Total Thickness	4.5 mm (EN ISO 24346)
Wear Classification	EN ISO 10874 33 Heavy Commercial / 42 General Light Industrial
Radiant Panel	Euroclass Bfl s1 (EN 13501-1)
Castor Chair	Pass (ISO 4918 / EN425)
Impact Sound Insulation ( $\Delta L_w$ )	16 dB (EN ISO 10140-3)
Abrasion Resistance	Group T (EN 660-2)
Packaging	2.5 m <sup>2</sup>



Ashlar Herringbone





LEVEL SET NATURAL WOODGRAINS - A00212 CEDAR INSTALLED: ASHLAR  
UR102 - 327104 FLAX INSTALLED: NON DIRECTIONAL



# Luxury Vinyl Tile

## Level Set® Collection - Textured Woodgrains



A00403 DISTRESSED HICKORY



A00404 DISTRESSED BLACK WALNUT



A00405 GREY DUNE



A00406 ANTIQUE LIGHT OAK



A00407 WHITE WASH



A00411 DARK WALNUT



A00413 ANNODIZED ASH



A00414 ANTIQUE MAPLE

## Specification

Backing	Sound Choice™ Acoustic Backing
Finish	Ceramor™ - UV Stabilized Ceramic Bead Coating
Product Definition	High Performance Luxury Vinyl Tile
Wear Layer Thickness	0.55 mm (EN ISO 24340)
Total Weight	6700 g/m <sup>2</sup> (EN ISO 23997)
Total Thickness	4.5 mm (EN ISO 24346)
Wear Classification	EN ISO 10874 33 Heavy Commercial / 42 General Light Industrial
Radiant Panel	Euroclass Bfl s1 (EN 13501-1)
Castor Chair	Pass (ISO 4918 / EN425)
Impact Sound Insulation ( $\Delta L_w$ )	16 dB (EN ISO 10140-3)
Abrasion Resistance	Group T (EN 660-2)
Packaging	2.5 m <sup>2</sup>



Ashlar Herringbone







LEVEL SET TEXTURED WOODGRAINS - A00414 ANTIQUE MAPLE  
INSTALLED: ASHLAR

# Luxury Vinyl Tile

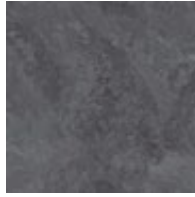
## Level Set® Collection - Natural Stones



A00101 JET MIST



A00102 MARONE DARK MARBLE



A00103 COOL IMPALA MARBLE



A00104 WARM IMPALA MARBLE

## Specification

Backing	Sound Choice™ Acoustic Backing
Finish	Ceramor™ - UV Stabilized Ceramic Bead Coating
Product Definition	High Performance Luxury Vinyl Tile
Wear Layer Thickness	0.55 mm (EN ISO 24340)
Total Weight	6700 g/m <sup>2</sup> (EN ISO 23997)
Total Thickness	4.5 mm (EN ISO 24346)
Wear Classification	EN ISO 10874 33 Heavy Commercial / 42 General Light Industrial
Radiant Panel	Euroclass Bfl s1 (EN 13501-1)
Castor Chair	Pass (ISO 4918 / EN425)
Impact Sound Insulation ( $\Delta L_w$ )	16 dB (EN ISO 10140-3)
Abrasion Resistance	Group T (EN 660-2)
Packaging	2.5 m <sup>2</sup>



Non Directional Brick Quarter Turn Ashlar Monolithic





LEVEL SET NATURAL STONES - A00101 JET MIST  
INSTALLAED: NON DIRECTIONAL





# Luxury Vinyl Tile

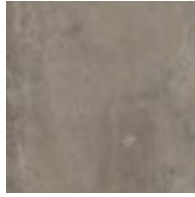
## Level Set® Collection - Textured Stones



A00301 POLISHED CEMENT



A00302 COOL POLISHED CEMENT



A00303 WARM POLISHED CEMENT



A00304 EMPERADOR GRAY



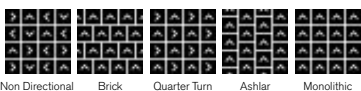
A00305 EMPERADOR TAUPE



A00307 CHESTNUT HORSEHAIR

## Specification

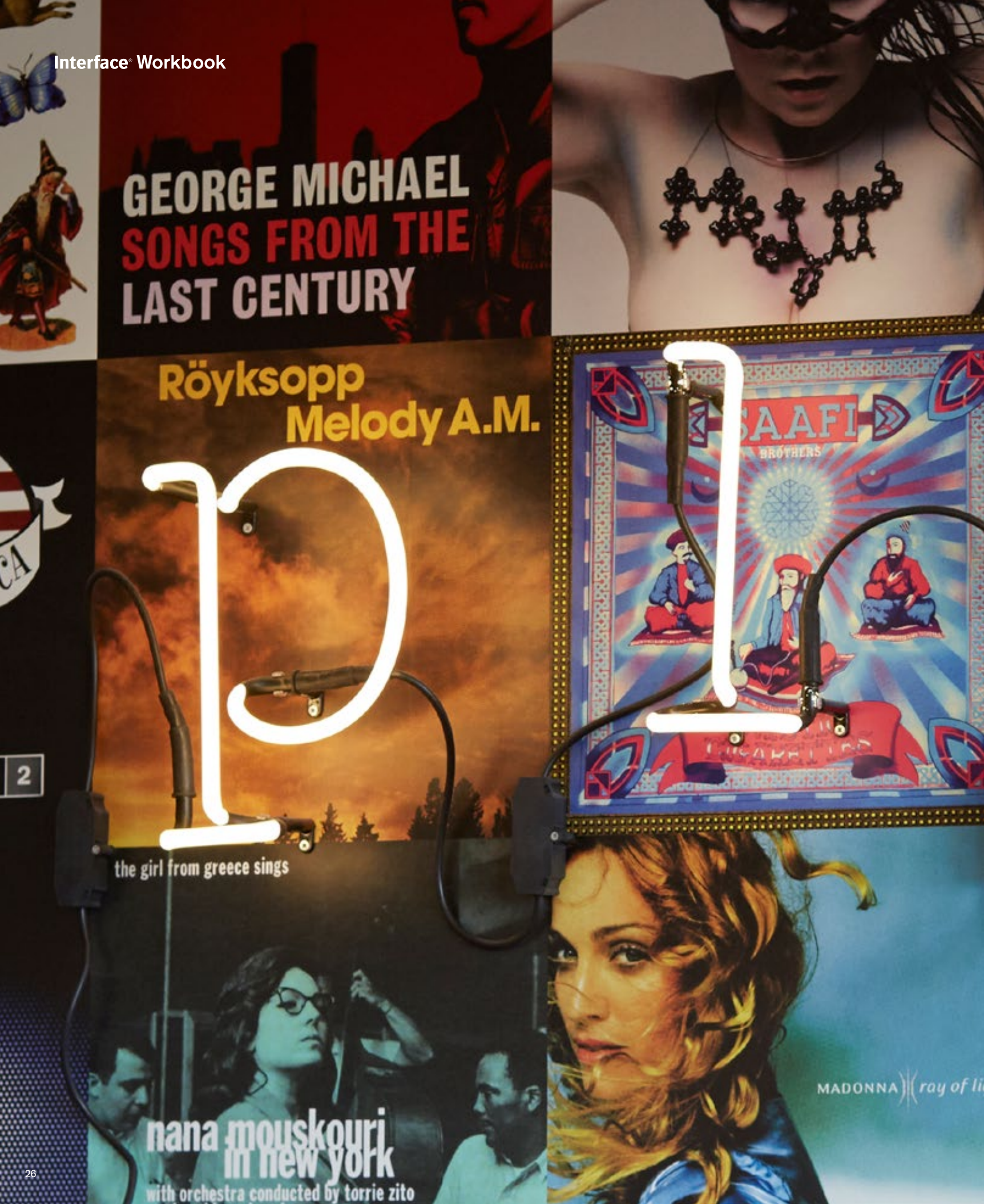
Backing	Sound Choice™ Acoustic Backing
Finish	Ceramor™ - UV Stabilized Ceramic Bead Coating
Product Definition	High Performance Luxury Vinyl Tile
Wear Layer Thickness	0.55 mm (EN ISO 24340)
Total Weight	6700 g/m <sup>2</sup> (EN ISO 23997)
Total Thickness	4.5 mm (EN ISO 24346)
Wear Classification	EN ISO 10874 33 Heavy Commercial / 42 General Light Industrial
Radiant Panel	Euroclass Bfl s1 (EN 13501-1)
Castor Chair	Pass (ISO 4918 / EN425)
Impact Sound Insulation ( $\Delta L_w$ )	16 dB (EN ISO 10140-3)
Abrasion Resistance	Group T (EN 660-2)
Packaging	2.5 m <sup>2</sup>



LEVEL SET TEXTURED STONES - A00302 COOL POLISHED CEMENT  
LEVEL SET NATURAL WOODGRAINS - A00205 STORM  
INSTALLED; DESIGN BY TILE







GEORGE MICHAEL  
SONGS FROM THE  
LAST CENTURY

Röyksopp  
Melody A.M.

1

AAFI  
BROTHERS

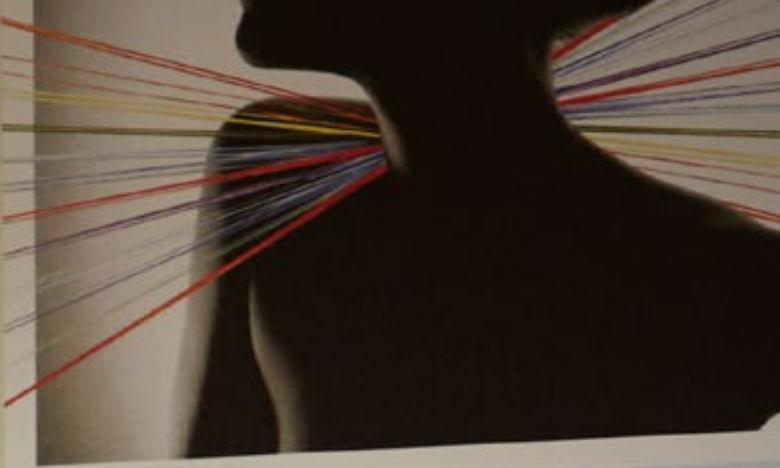
the girl from greece sings

nana mouskouri  
in new york  
with orchestra conducted by torrie zito

MADONNA ray of light

2





SAINT ETIENNE  
SOUND OF WATER

SUPER  
PRODUKTION SCHWARZ WALD CO... LATION  
FEATURING DAVE PIKE, OSCAR PETERSON... WOLKER KRIEGER... BELLA FITZGERALD A.O.

**YELLOW**  
pocket universe

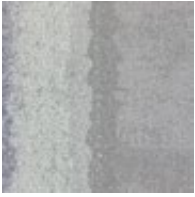
**JAZZMATAZZ**  
VOLUME  
THE NEW

HOSTED BY **GU**

FEATURING CHAKA KHAN | RAMSEY LEWIS | ME'SHELL NDEGEOCELLO | JAMROQUI | PATRA | RONNY JOE  
FREDDIE HUBBARD | INI KAMOZE | MICA PARIS | SHARA NELSON | REUBEN WILSON | COURTNEY PINE | BERNARD P  
KOOL KEITH OF ULTRAMAGNETICS | KENNY GARRETT | THE SOLSONICS | BAHAMADIA | DC LEE | BAYBE | BIG



## Composure Edge



4274001 PEWTER/  
ISOLATION



4274002 WAVE/  
ISOLATION



4274003 OLIVE/  
SECLUSION



4274004 SUNBURST/  
SECLUSION



4274005 ABYSS/  
DIFFUSE



4274006 SAPPHIRE/  
DIFFUSE



4274007 AUBERGINE/  
SOLITUDE



4274008 BERRY/  
SOLITUDE

## Specification

Backing	Graphlex®
Product Definition	Tufted Patterned Structured Loop Pile
Pile Material	100% Solution Dyed Nylon, Contains Recycled Content
Pile Yarn Weight	665 g/m <sup>2</sup> ± 5%
Pile Height	3.0 mm + 15% / - 10%
Total Thickness	6.3 mm ± 0.5 mm
Wear Classification	Heavy Contract (EN 1307) Class 33 / LC2
Radiant Panel	(EN ISO 9239-1) Euroclass Cfl s1 (EN 13501-1)
Castor Chair	≥ 2.4 (EN 985)
Impact Sound Insulation (ΔL <sub>w</sub> )	25 dB (EN ISO 10140-3)
Sound Absorption	α <sub>w</sub> 0.20 (EN ISO 11654)
Indoor Air Quality	GUT PRODIS - C46D295E
Packaging	4 m <sup>2</sup>



Non Directional





COMPOSURE EDGE - 4274003 OLIVE/SECLUSION INSTALLED: DESIGN BY TILE  
COMPOSURE - 4169017 SECLUSION INSTALLED: NON DIRECTIONAL



## Composure



4169002 DIFFUSE



4169003 SOLITUDE



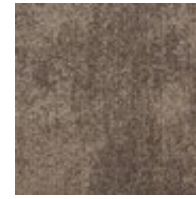
4169005 SERENE



4169007 TRANSCRIBE



4169008 ISOLATION



4169009 CONTENT



4169011 SOOTHE



4169012 RETREAT



4169014 CONTEMPLATE



4169015 HARMONIOUS



4169016 RESERVED



4169017 SECLUSION



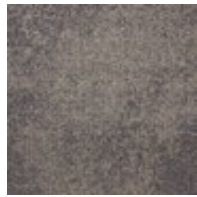
4169018 REGARD



4169019 PATIENCE



4169020 SECURE



4169021 DELIBERATE



4169058 SAPPHIRE



4169059 MARINE



4169060 SAILING



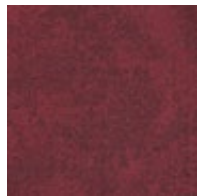
4169061 PEWTER



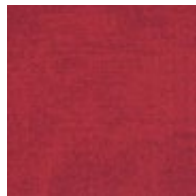
4169062 LAVENDER



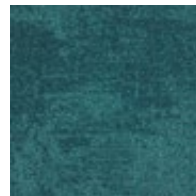
4169063 AUBERGINE



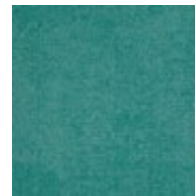
4169064 BERRY



4169065 CRANBERRY



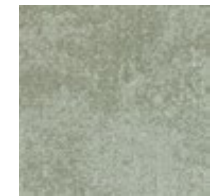
4169066 ABYSS



4169067 HARBOUR



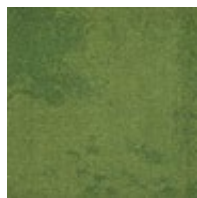
4169068 WAVE



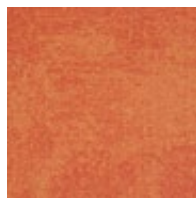
4169069 WILLOW



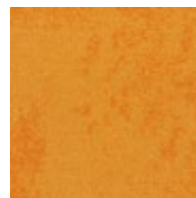
4169070 FERN



4169071 OLIVE



4169072 AMBER



4169073 SUNBURST

## Specification

Backing	Graphlex®
Product Definition	Tufted Patterned Structured Loop Pile
Pile Material	100% Solution Dyed Nylon, Contains Recycled Content
Pile Yarn Weight	570 g/m <sup>2</sup> ± 5%
Pile Height	2.6 mm + 15% / - 10%
Total Thickness	6.2 mm ± 0.5 mm
Wear Classification	Heavy Contract (EN 1307) Class 33 / LC1
Radiant Panel	(EN ISO 9239-1) Euroclass CfI s1 (EN 13501-1)
Castor Chair	≥ 2.4 (EN 985)
Impact Sound Insulation (ΔL <sub>w</sub> )	25 dB (EN ISO 10140-3)
Sound Absorption	α <sub>w</sub> 0.20 (EN ISO 11654)
Indoor Air Quality	GUT PRODIS - 70016FA2
Packaging	4 m <sup>2</sup>



Non Directional



COMPOSURE - 4169059 MARINE  
INSTALLED: NON DIRECTIONAL



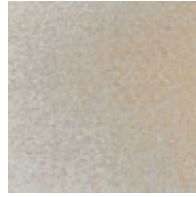
## Radial



4272001 AXIS



4272002 ANGLE



4272003 RAYS



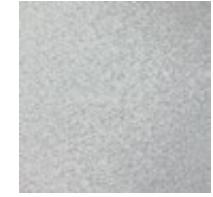
4272004 SIGNAL



4272005 ATOMIZED



4272006 DIFFUSE



4272007 VERTEX



4272008 DISPERSE



4272009 PROPORTION



4272010 PROJECTION



4272011 PERSPECTIVE



4272012 VISTA

## Specification

Backing	Graphlex®
Product Definition	Tapestry Tufted Patterned Structured Loop Pile
Pile Material	100% Solution Dyed Nylon, Contains Recycled Content
Pile Yarn Weight	848 g/m <sup>2</sup> ± 5%
Pile Height	3.5 mm + 15% / - 10%
Total Thickness	7.2 mm ± 0.5 mm
Wear Classification	Heavy Contract (EN 1307) Class 33 / LC2
Radiant Panel	(EN ISO 9239-1) Euroclass CfI s1 (EN 13501-1)
Castor Chair	≥ 2.4 (EN 985)
Impact Sound Insulation (ΔL <sub>w</sub> )	24 dB (EN ISO 10140-3)
Sound Absorption	α <sub>w</sub> 0.20 (EN ISO 11654)
Indoor Air Quality	GUT PRODIS - 644BAD27
Packaging	4 m <sup>2</sup>



Non Directional





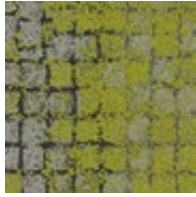
RADIAL - 4272009 PROPORTION  
LEVEL SET TEXTURED STONES - A00302 COOL POLISHED CEMENT  
INSTALLED: NON DIRECTIONAL



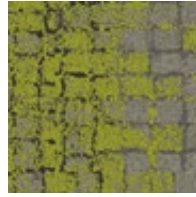
Moss



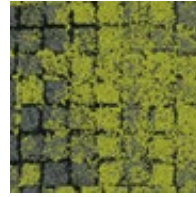
8341001 GRANITE/  
MOSS



8341002 SLATE/MOSS



8341003 FLINT/MOSS



8341004 ONYX/MOSS

Specification

Backing	Graphlex®
Product Definition	Tapestry Tufted Patterned Structured Loop Pile
Pile Material	100% Recycled Solution Dyed Nylon
Pile Yarn Weight	916 g/m <sup>2</sup> ± 5%
Pile Height	4.0 mm + 15% / - 10%
Total Thickness	8.2 mm ± 0.5 mm
Wear Classification	Heavy Contract (EN 1307) Class 33 / LC2
Radiant Panel	(EN ISO 9239-1) Euroclass Cfl s1 (EN 13501-1)
Castor Chair	≥ 2.4 (EN 985)
Impact Sound Insulation (ΔL <sub>w</sub> )	24 dB (EN ISO 10140-3)
Sound Absorption	α <sub>w</sub> 0.20 (EN ISO 11654)
Indoor Air Quality	GUT PRODIS - Pending
Packaging	3 m <sup>2</sup>



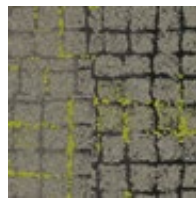
Moss in Stone



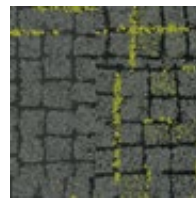
8342001 GRANITE  
EDGE



8342002 SLATE  
EDGE



8342003 FLINT  
EDGE



8342004 ONYX  
EDGE

Specification

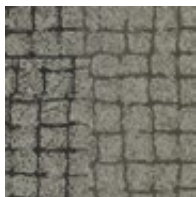
Backing	Graphlex®
Product Definition	Tapestry Tufted Patterned Structured Loop Pile
Pile Material	100% Recycled Solution Dyed Nylon
Pile Yarn Weight	848 g/m <sup>2</sup> ± 5%
Pile Height	3.9 mm + 15% / - 10%
Total Thickness	8.0 mm ± 0.5 mm
Wear Classification	Heavy Contract (EN 1307) Class 33 / LC2
Radiant Panel	(EN ISO 9239-1) Euroclass Cfl s1 (EN 13501-1)
Castor Chair	≥ 2.4 (EN 985)
Impact Sound Insulation (ΔL <sub>w</sub> )	24 dB (EN ISO 10140-3)
Sound Absorption	α <sub>w</sub> 0.20 (EN ISO 11654)
Indoor Air Quality	GUT PRODIS - Pending
Packaging	3 m <sup>2</sup>



Sett in Stone



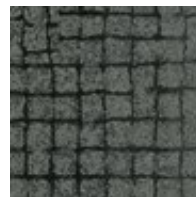
8342001 GRANITE



8342002 SLATE



8342003 FLINT



8342004 ONYX

Specification

Backing	Graphlex®
Product Definition	Tapestry Tufted Patterned Structured Loop Pile
Pile Material	100% Recycled Solution Dyed Nylon
Pile Yarn Weight	746 g/m <sup>2</sup> ± 5%
Pile Height	4.0 mm + 15% / - 10%
Total Thickness	7.1 mm ± 0.5 mm
Wear Classification	Heavy Contract (EN 1307) Class 33 / LC2
Radiant Panel	(EN ISO 9239-1) Euroclass Cfl s1 (EN 13501-1)
Castor Chair	≥ 2.4 (EN 985)
Impact Sound Insulation (ΔL <sub>w</sub> )	24 dB (EN ISO 10140-3)
Sound Absorption	α <sub>w</sub> 0.20 (EN ISO 11654)
Indoor Air Quality	GUT PRODIS - Pending
Packaging	4 m <sup>2</sup>







MOSS IN STONE - 8340003 FLINT EDGE  
SETT IN STONE - 8342003 FLINT  
MOSS - 8341003 FLINT/MOSS  
INSTALLED: DESIGN BY TILE



Kerbstone



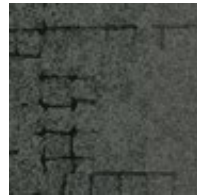
8339001 GRANITE



8339002 SLATE



8339003 FLINT



8339004 ONYX

Specification

Backing	Graphlex®
Product Definition	Tapestry Tufted Patterned Structured Loop Tile
Pile Material	100% Recycled Solution Dyed Nylon
Pile Yarn Weight	746 g/m <sup>2</sup> ± 5%
Pile Height	3.5 mm + 15% / - 10%
Total Thickness	7.1 mm ± 0.5 mm
Wear Classification	Heavy Contract (EN 1307) Class 33 / LC2
Radiant Panel	(EN ISO 9239-1) Euroclass Cfl s1 (EN 13501-1)
Castor Chair	≥ 2.4 (EN 985)
Impact Sound Insulation (ΔL <sub>w</sub> )	24 dB (EN ISO 10140-3)
Sound Absorption	α <sub>w</sub> 0.20 (EN ISO 11654)
Indoor Air Quality	GUT PRODIS - Pending
Packaging	4 m <sup>2</sup>



Flagstone



8338001 GRANITE



8338002 SLATE



8338003 FLINT



8338004 ONYX

Specification

Backing	Graphlex®
Product Definition	Tapestry Tufted Patterned Structured Loop Pile
Pile Material	100% Recycled Solution Dyed Nylon
Pile Yarn Weight	780 g/m <sup>2</sup> ± 5%
Pile Height	3.6 mm + 15% / - 10%
Total Thickness	6.9 mm ± 0.5 mm
Wear Classification	Heavy Contract (EN 1307) Class 33 / LC2
Radiant Panel	(EN ISO 9239-1) Euroclass Cfl s1 (EN 13501-1)
Castor Chair	≥ 2.4 (EN 985)
Impact Sound Insulation (ΔL <sub>w</sub> )	24 dB (EN ISO 10140-3)
Sound Absorption	α <sub>w</sub> 0.20 (EN ISO 11654)
Indoor Air Quality	GUT PRODIS - Pending
Packaging	4 m <sup>2</sup>



Paver



8337001 GRANITE



8337002 SLATE



8337003 FLINT



8337004 ONYX

Specification

Backing	Graphlex®
Product Definition	Tufted Patterned Structured Loop Pile
Pile Material	100% Recycled Solution Dyed Nylon
Pile Yarn Weight	645 g/m <sup>2</sup> ± 5%
Pile Height	3.4 mm + 15% / - 10%
Total Thickness	6.9 mm ± 0.5 mm
Wear Classification	Heavy Contract (EN 1307) Class 33 / LC2
Radiant Panel	(EN ISO 9239-1) Euroclass Cfl s1 (EN 13501-1)
Castor Chair	≥ 2.4 (EN 985)
Impact Sound Insulation (ΔL <sub>w</sub> )	26 dB (EN ISO 10140-3)
Sound Absorption	α <sub>w</sub> 0.20 (EN ISO 11654)
Indoor Air Quality	GUT PRODIS - Pending
Packaging	4 m <sup>2</sup>







FLAGSTONE - 8338003 FLINT, 8338004 ONYX  
SETT IN STONE - 8342004 ONYX  
INSTALLED: NON DIRECTIONAL

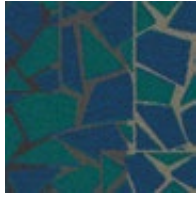


# Human Connections® Collection

## Rue



8344001 GREY



8344002 TEAL



8344003 GREEN



8344004 YELLOW



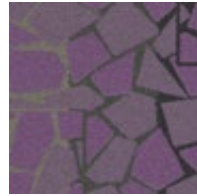
8344005 ORANGE



8344006 RED

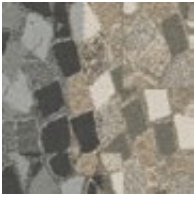


8344007 PINK



8344008 PURPLE

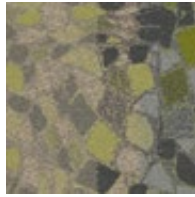
## Stone Course



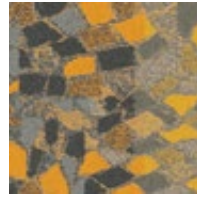
8343001 GREY/STONE



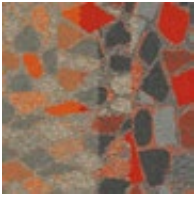
8343002 TEAL/STONE



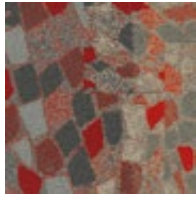
8343003 GREEN/  
STONE



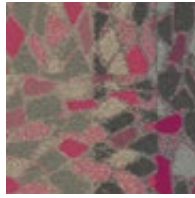
8343004 YELLOW/  
STONE



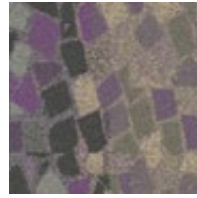
8343005 ORANGE/  
STONE



8343006 RED/STONE



8343007 PINK/STONE



8343008 PURPLE/  
STONE

## Specification

### Rue

Backing  
Product Definition  
Pile Material  
Pile Yarn Weight  
Pile Height  
Total Thickness  
Wear Classification  
Radiant Panel  
Castor Chair  
Impact Sound Insulation ( $\Delta L_w$ )  
Sound Absorption  
Indoor Air Quality  
Packaging

Graphlex®  
Tapestry Tufted Patterned Structured Loop Pile  
100% Recycled Solution Dyed Nylon  
916 g/m<sup>2</sup> ± 5%  
4.5 mm + 15% / - 10%  
7.5 mm ± 0.5 mm  
Heavy Contract (EN 1307) Class 33 / LC2  
(EN ISO 9239-1) Euroclass Cfl s1 (EN 13501-1)  
≥ 2.4 (EN 985)  
24 dB (EN ISO 10140-3)  
 $\alpha_w$  0.20 (EN ISO 11654)  
GUT PRODIS - Pending  
4 m<sup>2</sup>



## Specification

### Stone Course

Backing  
Product Definition  
Pile Material  
Pile Yarn Weight  
Pile Height  
Total Thickness  
Wear Classification  
Radiant Panel  
Castor Chair  
Impact Sound Insulation ( $\Delta L_w$ )  
Sound Absorption  
Indoor Air Quality  
Packaging

Graphlex®  
Tapestry Tufted Patterned Structured Loop Pile  
100% Recycled Solution Dyed Nylon  
916 g/m<sup>2</sup> ± 5%  
3.7 mm + 15% / - 10%  
8.0 mm ± 0.5 mm  
Heavy Contract (EN 1307) Class 33 / LC2  
(EN ISO 9239-1) Euroclass Cfl s1 (EN 13501-1)  
≥ 2.4 (EN 985)  
24 dB (EN ISO 10140-3)  
 $\alpha_w$  0.20 (EN ISO 11654)  
GUT PRODIS - Pending  
4 m<sup>2</sup>





RUE - 8344006 RED, 8344005 ORANGE  
STONE COURSE - 8343005 ORANGE/STONE, 8343001 GREY/STONE  
INSTALLED: DESIGN BY TILE







Breathe



## Conscient



4195001 TRACE



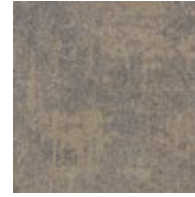
4195002 FACTOR



4195003 EMISSION



4195004 REFINED



4195005 ELEMENT



4195006 FRAGMENT

## Specification

Backing	CircuitBac Green
Product Definition	Tufted Patterned Structured Tip Sheared Pile
Pile Material	100% Solution Dyed Nylon, 62.5% Biobased
Pile Yarn Weight	686 g/m <sup>2</sup> ± 5%
Pile Height	2.9 mm + 15% / - 10%
Total Thickness	5.8 mm ± 0.5 mm
Wear Classification	Heavy Contract (EN 1307) Class 33 / LC2
Radiant Panel	(EN ISO 9239-1) Euroclass Bfl s1 (EN 13501-1)
Castor Chair	≥ 2.4 (EN 985)
Impact Sound Insulation ( $\Delta L_w$ )	23 dB (EN ISO 10140-3)
Sound Absorption	$\alpha_w$ 0.15 (EN ISO 11654)
Indoor Air Quality	GUT PRODIS - 8139DF56
Packaging	5 m <sup>2</sup>



Non Directional







CONSCIENT - 4195006 FRAGMENT  
INSTALLED - NON DIRECTIONAL



## Collect™



4188002 SENSIFY



4188003 ALLURE



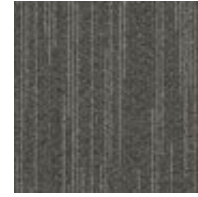
4188004 ENRICH



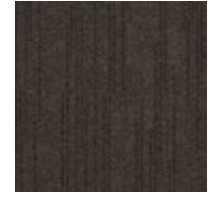
4188005 PURITY



4188006 ATTRACTION



4188007 CAPTIVATE



4188009 FILTER



4188010 MAGNETIZE

## Specification

Backing	Graphlex®
Product Definition	Tufted Patterned Structured Loop Pile
Pile Material	100% Recycled Solution Dyed Nylon
Pile Yarn Weight	808g/m <sup>2</sup> ± 5%
Pile Height	4.2 mm + 15% / - 10%
Total Thickness	7.9 mm ± 0.5 mm
Wear Classification	Heavy Contract (EN 1307) Class 33 / LC2
Radiant Panel	(EN ISO 9239-1) Euroclass Cf1 s1 (EN 13501-1)
Castor Chair	≥ 2.4 (EN 985)
Impact Sound Insulation (ΔL <sub>w</sub> )	26 dB (EN ISO 10140-3)
Sound Absorption	α <sub>w</sub> 0.20 (EN ISO 11654)
Indoor Air Quality	GUT PRODIS - B071FAF3
Packaging	4 m <sup>2</sup>



COLLECT - #188005 PURITY  
INSTALLED: MONOLITHIC





# Equal Measure® Collection

## EM551



7887001 COBBLESTONE ST.



7887002 PARK ST.



7887003 MAIN ST.



7887004 HILL ST.



7887005 BROAD ST.



7887006 MARKET ST.



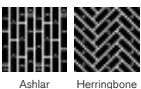
7887007 UNION ST.



7887008 OLDTOWN ST.

## Specification

Backing	Graphlex®
Product Definition	Tufted Patterned Structured Loop Pile
Pile Material	100% Recycled Solution Dyed Nylon
Pile Yarn Weight	882 g/m <sup>2</sup> ± 5%
Pile Height	4.3 mm + 15% / - 10%
Total Thickness	7.6 mm ± 0.5 mm
Wear Classification	Heavy Contract (EN 1307) Class 33 / LC2
Radiant Panel	(EN ISO 9239-1) Euroclass Cfl s1 (EN 13501-1)
Castor Chair	≥ 2.4 (EN 985)
Impact Sound Insulation (ΔL <sub>w</sub> )	26 dB (EN ISO 10140-3)
Sound Absorption	α <sub>w</sub> 0.20 (EN ISO 11654)
Indoor Air Quality	GUT PRODIS - 6ABE29DF
Packaging	4 m <sup>2</sup>



**100%**  
Recycled  
Nylon





EM551 - 7887005 BROAD ST, EM552 - 7888005 BROAD AVE, EM553 - 7889005 BROAD BLVD  
INSTALLED: ASHLAR



# Equal Measure® Collection

## EM552



7888001 COBBLESTONE AVE.



7888002 PARK AVE.



7888003 MAIN AVE



7888004 HILL AVE.



7888005 BROAD AVE.



7888006 MARKET AVE.



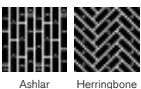
7888007 UNION AVE.



7888008 OLDTOWN AVE.

## Specification

Backing	Graphlex®
Product Definition	Tufted Patterned Structured Tip Sheared Pile
Pile Material	100% Recycled Solution Dyed Nylon
Pile Yarn Weight	949 g/m <sup>2</sup> ± 5%
Pile Height	5.6 mm + 15% / - 10%
Total Thickness	9.6 mm ± 0.5 mm
Wear Classification	Heavy Contract (EN 1307) Class 33 / LC3
Radiant Panel	(EN ISO 9239-1) Euroclass Cfl s1 (EN 13501-1)
Castor Chair	≥ 2.4 (EN 985)
Impact Sound Insulation (ΔL <sub>w</sub> )	26 dB (EN ISO 10140-3)
Sound Absorption	α <sub>w</sub> 0.20 (EN ISO 11654)
Indoor Air Quality	GUT PRODIS - 210FA504
Packaging	3 m <sup>2</sup>



**100%**  
Recycled  
Nylon





EM552 - 7888005 BROAD AVE  
INSTALLED: ASHLAR



# Equal Measure® Collection

## EM553



7889001 COBBLESTONE BLVD.



7889002 PARK BLVD.



7889003 MAIN BLVD.



7889004 HILL BLVD.



7889005 BROAD BLVD.



7889006 MARKET BLVD.



7889007 UNION BLVD.



7889008 OLDTOWN BLVD.

## Specification

Backing	Graphlex®
Product Definition	Tufted Patterned Structured Tip Sheared Pile
Pile Material	100% Recycled Solution Dyed Nylon
Pile Yarn Weight	1221 g/m <sup>2</sup> ± 5%
Pile Height	6.1 mm + 15% / - 10%
Total Thickness	9.6 mm ± 0.5 mm
Wear Classification	Heavy Contract (EN 1307) Class 33 / LC4
Radiant Panel	(EN ISO 9239-1) Euroclass Cfl s1 (EN 13501-1)
Castor Chair	≥ 2.4 (EN 985)
Impact Sound Insulation (ΔL <sub>w</sub> )	27 dB (EN ISO 10140-3)
Sound Absorption	α <sub>w</sub> 0.20 (EN ISO 11654)
Indoor Air Quality	GUT PRODIS - 990B5AD0
Packaging	3 m <sup>2</sup>



**100%**  
Recycled  
Nylon





EM553 - 7889007 UNION BLVD, EM551 - 7887007 UNION ST.  
INSTALLED: HERRINGBONE



# Urban Retreat® Collection

## UR101



327110 BARK/MOSS



327111 CHARCOAL/LICHEN



327112 STRAW/GRASS



327113 GRANITE/LICHEN



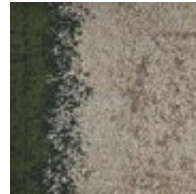
327114 FLAX/GRASS



327115 STONE/IVY



327116 SAGE/MOSS



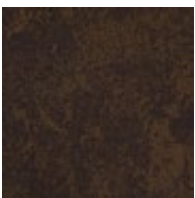
327117 ASH/IVY

### Specification

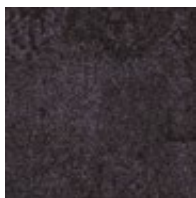
Backing	Graphlex®
Product Definition	Tapestry Tufted Patterned Structured Loop Pile
Pile Material	100% Recycled Solution Dyed Nylon
Pile Yarn Weight	851 g/m <sup>2</sup> ± 5%
Pile Height	2.6 mm + 15% / - 10%
Total Thickness	7.7 mm ± 0.5 mm
Wear Classification	Heavy Contract (EN 1307) Class 33 / LC2
Radiant Panel	(EN ISO 9239-1) Euroclass Cfl s1 (EN 13501-1)
Castor Chair	≥ 2.4 (EN 985)
Impact Sound Insulation (ΔL <sub>w</sub> )	24 dB (EN ISO 10140-3)
Sound Absorption	α <sub>w</sub> 0.20 (EN ISO 11654)
Indoor Air Quality	GUT PRODIS - 004EA8FB
Packaging	4 m <sup>2</sup>



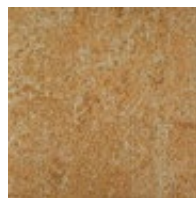
## UR102



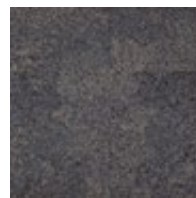
327100 BARK



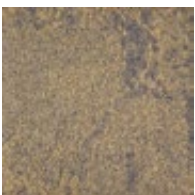
327101 CHARCOAL



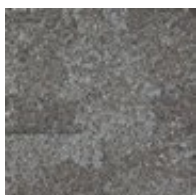
327102 STRAW



327103 GRANITE



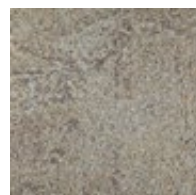
327104 FLAX



327105 STONE



327106 SAGE



327107 ASH

### Specification

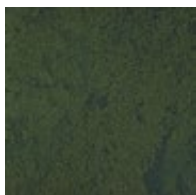
Backing	Graphlex®
Product Definition	Tapestry Tufted Patterned Structured Loop Pile
Pile Material	100% Recycled Solution Dyed Nylon
Pile Yarn Weight	863 g/m <sup>2</sup> ± 5%
Pile Height	2.4 mm + 15% / - 10%
Total Thickness	7.1 mm ± 0.5 mm
Wear Classification	Heavy Contract (EN 1307) Class 33 / LC1
Radiant Panel	(EN ISO 9239-1) Euroclass Cfl s1 (EN 13501-1)
Castor Chair	≥ 2.4 (EN 985)
Impact Sound Insulation (ΔL <sub>w</sub> )	24 dB (EN ISO 10140-3)
Sound Absorption	α <sub>w</sub> 0.20 (EN ISO 11654)
Indoor Air Quality	GUT PRODIS - 04BE58F6
Packaging	4 m <sup>2</sup>



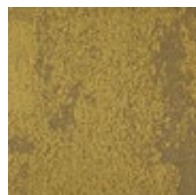
## UR103



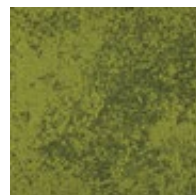
327120 LICHEN



327121 IVY



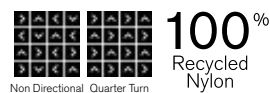
327122 MOSS



327123 GRASS

### Specification

Backing	Graphlex®
Product Definition	Tapestry Tufted Patterned Structured Loop Pile
Pile Material	100% Recycled Solution Dyed Nylon
Pile Yarn Weight	857 g/m <sup>2</sup> ± 5%
Pile Height	2.6 mm + 15% / - 10%
Total Thickness	7.8 mm ± 0.5 mm
Wear Classification	Heavy Contract (EN 1307) Class 33 / LC2
Radiant Panel	(EN ISO 9239-1) Euroclass Cfl s1 (EN 13501-1)
Castor Chair	≥ 2.4 (EN 985)
Impact Sound Insulation (ΔL <sub>w</sub> )	24 dB (EN ISO 10140-3)
Sound Absorption	α <sub>w</sub> 0.20 (EN ISO 11654)
Indoor Air Quality	GUT PRODIS - A9D4CE0E
Packaging	4 m <sup>2</sup>







UR101 - 327114 FLAX/GRASS, UR102 - 327104 FLAX, UR103 - 327123 GRASS  
INSTALLED: DESIGN BY TILE



# Urban Retreat® Collection

## UR201



326930 BARK

326931 CHARCOAL

326932 STRAW

326933 GRANITE



326934 FLAX

326935 STONE

326936 SAGE

326937 ASH

### Specification

Backing	Graphlex®
Product Definition	Tufted Patterned Structured Tip Sheared Pile
Pile Material	100% Recycled Solution Dyed Nylon
Pile Yarn Weight	957 g/m <sup>2</sup> ± 5%
Pile Height	4.4 mm + 15% / - 10%
Total Thickness	8.1 mm ± 0.5 mm
Wear Classification	Heavy Contract (EN 1307) Class 33 / LC2
Radiant Panel	(EN ISO 9239-1) Euroclass Cfl s1 (EN 13501-1)
Castor Chair	≥ 2.4 (EN 985)
Impact Sound Insulation (ΔL <sub>w</sub> )	27 dB (EN ISO 10140-3)
Sound Absorption	α <sub>w</sub> 0.20 (EN ISO 11654)
Indoor Air Quality	GUT PRODIS - CCD03C4B
Packaging	4 m <sup>2</sup>



## UR202



326980 BARK

326981 CHARCOAL

326982 STRAW

326983 GRANITE



326984 FLAX

326985 STONE

326986 SAGE

326987 ASH

### Specification

Backing	Graphlex®
Product Definition	Tufted Patterned Structured Loop Pile
Pile Material	100% Recycled Solution Dyed Nylon
Pile Yarn Weight	886 g/m <sup>2</sup> ± 5%
Pile Height	3.8 mm + 15% / - 10%
Total Thickness	7.5 mm ± 0.5 mm
Wear Classification	Heavy Contract (EN 1307) Class 33 / LC2
Radiant Panel	(EN ISO 9239-1) Euroclass Cfl s1 (EN 13501-1)
Castor Chair	≥ 2.4 (EN 985)
Impact Sound Insulation (ΔL <sub>w</sub> )	27 dB (EN ISO 10140-3)
Sound Absorption	α <sub>w</sub> 0.20 (EN ISO 11654)
Indoor Air Quality	GUT PRODIS - CACC31EC
Packaging	4 m <sup>2</sup>



## UR203



326970 BARK

326971 CHARCOAL

326972 STRAW

326973 GRANITE



326974 FLAX

326975 STONE

326976 SAGE

326977 ASH

### Specification

Backing	Graphlex®
Product Definition	Tufted Patterned Structured Loop Pile
Pile Material	100% Recycled Solution Dyed Nylon
Pile Yarn Weight	830 g/m <sup>2</sup> ± 5%
Pile Height	3.2 mm + 15% / - 10%
Total Thickness	7.0 mm ± 0.5 mm
Wear Classification	Heavy Contract (EN 1307) Class 33 / LC2
Radiant Panel	(EN ISO 9239-1) Euroclass Cfl s1 (EN 13501-1)
Castor Chair	≥ 2.4 (EN 985)
Impact Sound Insulation (ΔL <sub>w</sub> )	27 dB (EN ISO 10140-3)
Sound Absorption	α <sub>w</sub> 0.20 (EN ISO 11654)
Indoor Air Quality	GUT PRODIS - 83FE5B1B
Packaging	4 m <sup>2</sup>





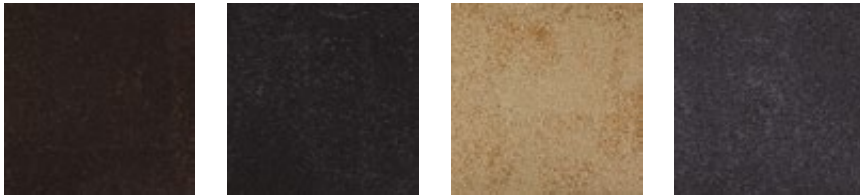


UR201 - 326931 CHARCOAL  
INSTALLED: ASHLAR



# Urban Retreat® Collection

## UR301



327130 BARK

327131 CHARCOAL

327132 STRAW

327133 GRANITE



327134 FLAX

327135 STONE

327136 SAGE

327137 ASH

## Specification

Backing	Graphlex®
Product Definition	Tapestry Tufted Patterned Structured Tip Sheared Pile
Pile Material	100% Recycled Solution Dyed Nylon
Pile Yarn Weight	842 g/m <sup>2</sup> ± 5%
Pile Height	2.4 mm + 15% / - 10%
Total Thickness	7.3 mm ± 0.5 mm
Wear Classification	Heavy Contract (EN 1307) Class 33 / LC2
Radiant Panel	(EN ISO 9239-1) Euroclass Cfl s1 (EN 13501-1)
Castor Chair	≥ 2.4 (EN 985)
Impact Sound Insulation (ΔL <sub>w</sub> )	24 dB (EN ISO 10140-3)
Sound Absorption	α <sub>w</sub> 0.20 (EN ISO 11654)
Indoor Air Quality	GUT PRODIS - BB3BBFD9
Packaging	4 m <sup>2</sup>



## UR302



327000 BARK

327001 CHARCOAL

327002 STRAW

327003 GRANITE



327004 FLAX

327005 STONE

327006 SAGE

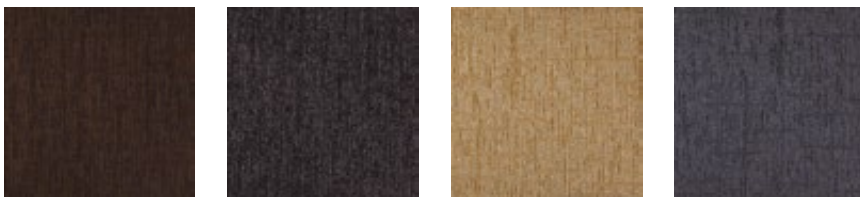
327007 ASH

## Specification

Backing	Graphlex®
Product Definition	Tufted Level Loop Pile
Pile Material	100% Recycled Solution Dyed Nylon
Pile Yarn Weight	678 g/m <sup>2</sup> ± 5%
Pile Height	2.7 mm + 15% / - 10%
Total Thickness	6.6 mm ± 0.5 mm
Wear Classification	Heavy Contract (EN 1307) Class 33 / LC2
Radiant Panel	(EN ISO 9239-1) Euroclass Cfl s1 (EN 13501-1)
Castor Chair	≥ 2.4 (EN 985)
Impact Sound Insulation (ΔL <sub>w</sub> )	23 dB (EN ISO 10140-3)
Sound Absorption	α <sub>w</sub> 0.15 (EN ISO 11654)
Indoor Air Quality	GUT PRODIS - 01EB6490
Packaging	4 m <sup>2</sup>



## UR303



326990 BARK

326991 CHARCOAL

326992 STRAW

326993 GRANITE



326994 FLAX

326995 STONE

326996 SAGE

326997 ASH

## Specification

Backing	Graphlex®
Product Definition	Tufted Patterned Structured Tip Sheared Pile
Pile Material	100% Recycled Solution Dyed Nylon
Pile Yarn Weight	783 g/m <sup>2</sup> ± 5%
Pile Height	3.1 mm + 15% / - 10%
Total Thickness	7.2 mm ± 0.5 mm
Wear Classification	Heavy Contract (EN 1307) Class 33 / LC2
Radiant Panel	(EN ISO 9239-1) Euroclass Cfl s1 (EN 13501-1)
Castor Chair	≥ 2.4 (EN 985)
Impact Sound Insulation (ΔL <sub>w</sub> )	24 dB (EN ISO 10140-3)
Sound Absorption	α <sub>w</sub> 0.20 (EN ISO 11654)
Indoor Air Quality	GUT PRODIS - 9F6CFA50
Packaging	4 m <sup>2</sup>





UR301 - 327133 GRANITE  
INSTALLED: NON DIRECTIONAL





# Urban Retreat® Collection

## UR501



327500 GOLD



327501 MOSS



327502 BARK



327503 STRAW



327504 GRASS



327505 IVY



327506 FLAX



327507 SAGE



327508 BLUE



327509 NAVY



327510 ASH



327511 STONE



327512 ORANGE



327513 RED



327514 GRANITE



327515 CHARCOAL

## Specification

Backing	Graphlex®
Product Definition	Tufted Patterned Structured Tip Sheared Pile
Pile Material	100% Recycled Solution Dyed Nylon
Pile Yarn Weight	861 g/m <sup>2</sup> ± 5%
Pile Height	4.6 mm + 15% / - 10%
Total Thickness	8.4 mm ± 0.5 mm
Wear Classification	Heavy Contract (EN 1307) Class 33 / LC2
Radiant Panel	(EN ISO 9239-1) Euroclass Cfl s1 (EN 13501-1)
Castor Chair	≥ 2.4 (EN 985)
Impact Sound Insulation (ΔL <sub>w</sub> )	27 dB (EN ISO 10140-3)
Sound Absorption	α <sub>w</sub> 0.20 (EN ISO 11654)
Indoor Air Quality	GUT PRODIS - 697D3D29
Packaging	3 m <sup>2</sup>







UR 501 - 327506 FLAX & 327505 IVY  
INSTALLED: ASHLAR











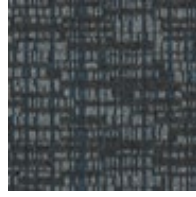
## Works Dash



4277001 CANARY



4277002 SUNRISE



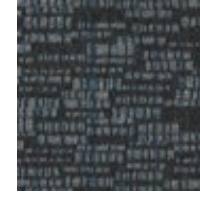
4277003 AQUA



4277004 LIME



4277005 VIOLET



4277006 COBALT

## Specification

Backing	Graphlex®
Product Definition	Tufted Patterned Structured Loop Pile
Pile Material	100% Solution Dyed Nylon
Pile Yarn Weight	585 g/m <sup>2</sup> ± 5%
Pile Height	3.4 mm + 15% / - 10%
Total Thickness	7.2 mm ± 0.5 mm
Wear Classification	Heavy Contract (EN 1307) Class 33 / LC1
Radiant Panel	(EN ISO 9239-1) Euroclass Bfl s1 (EN 13501-1)
Castor Chair	≥ 2.4 (EN 985)
Impact Sound Insulation ( $\Delta L_w$ )	25 dB (EN ISO 10140-3)
Sound Absorption	$\alpha_w$ 0.20 (EN ISO 11654)
Indoor Air Quality	GUT PRODIS - 6FD2E715
Packaging	4 m <sup>2</sup>



Brick Ashlar Monolithic



WORKS DASH - 4277002 SUNRISE INSTALLED: BRICK



## Works Hype



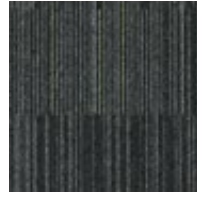
4275001 CANARY



4275002 SUNRISE



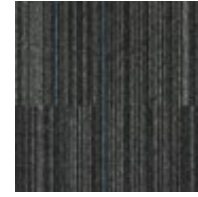
4275003 AQUA



4275004 LIME



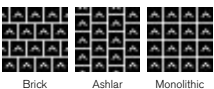
4275005 VIOLET



4275006 COBALT

## Specification

Backing	Graphlex®
Product Definition	Tufted Patterned Structured Loop Pile
Pile Material	100% Solution Dyed Nylon
Pile Yarn Weight	583 g/m <sup>2</sup> ± 5%
Pile Height	3.8 mm + 15% / - 10%
Total Thickness	7.2 mm ± 0.5 mm
Wear Classification	Heavy Contract (EN 1307) Class 33 / LC1
Radiant Panel	(EN ISO 9239-1) Euroclass Bfl s1 (EN 13501-1)
Castor Chair	≥ 2.4 (EN 985)
Impact Sound Insulation (ΔL <sub>w</sub> )	25 dB (EN ISO 10140-3)
Sound Absorption	α <sub>w</sub> 0.20 (EN ISO 11654)
Indoor Air Quality	GUT PRODIS - 6FD2E715
Packaging	4 m <sup>2</sup>



Brick Ashlar Monolithic

WORKS HYPE - 4275004 LIME - INSTALLED: ASHLAR  
LEVEL SET NATURAL STONES - A00101 JET MIST - INSTALLED: MONOLITHIC





## Works Flow



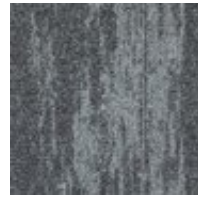
4276001 LINEN



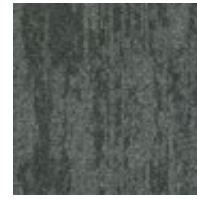
4276002 MINK



4276003 MOCHA



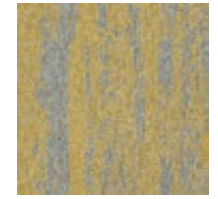
4276004 PEBBLE



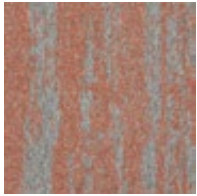
4276005 CHARCOAL



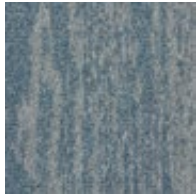
4276006 BLACK



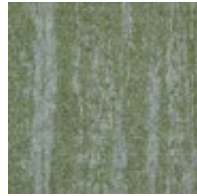
4276007 CANARY



4276008 SUNRISE



4276009 AQUA



4276010 LIME



4276011 VIOLET



4276012 COBALT

## Specification

Backing	Graphlex®
Product Definition	Tufted Patterned Structured Loop Pile
Pile Material	100% Solution Dyed Nylon
Pile Yarn Weight	600 g/m <sup>2</sup> ± 5%
Pile Height	3.3 mm +15% / - 10%
Total Thickness	6.8 mm ± 0.5 mm
Wear Classification	Heavy Contract (EN 1307) Class 33 / LC1
Radiant Panel	(EN ISO 9239-1) Euroclass Bfl s1 (EN 13501-1)
Castor Chair	≥ 2.4 (EN 985)
Impact Sound Insulation (ΔL <sub>w</sub> )	25 dB (EN ISO 10140-3)
Sound Absorption	α <sub>w</sub> 0.20 (EN ISO 11654)
Indoor Air Quality	GUT PRODIS - 6FD2E715
Packaging	4 m <sup>2</sup>



Brick Ashlar Monolithic



WORKS FLOW - 4276004 PEBBLE  
LEVEL SET TEXTURED STONES - A00302 COOL POLISHED CEMENT  
INSTALLED: MONOLITHIC



## Works Geometry



4278001 MINK



4278002 LINEN



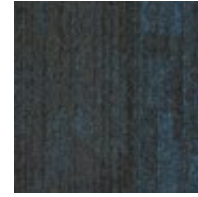
4278003 CHARCOAL



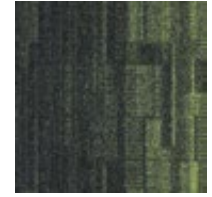
4278004 CANARY



4278005 SUNRISE



4278006 AQUA



4278007 LIME



4278008 VIOLET



4278009 COBALT

## Specification

Backing	Graphlex®
Product Definition	Tufted Patterned Structured Loop Pile
Pile Material	100% Solution Dyed Nylon
Pile Yarn Weight	570 g/m <sup>2</sup> ± 5%
Pile Height	3.7 mm + 15% / - 10%
Total Thickness	7.2 mm ± 0.5 mm
Wear Classification	Heavy Contract (EN 1307) Class 33 / LC1
Radiant Panel	(EN ISO 9239-1) Euroclass Bfl s1 (EN 13501-1)
Castor Chair	≥ 2.4 (EN 985)
Impact Sound Insulation (ΔL <sub>w</sub> )	23 dB (EN ISO 10140-3)
Sound Absorption	α <sub>w</sub> 0.15 (EN ISO 11654)
Indoor Air Quality	GUT PRODIS - 6FD2E715
Packaging	4 m <sup>2</sup>



Non Directional Brick Quarter Turn Ashlar



WORKS GEOMETRY - 4278004 CANARY - INSTALLED; NON DIRECTIONAL  
POLICHROME STIPPLE - 4265018 BUTTERCUP - INSTALLED; MONOLITHIC



## Contemplation



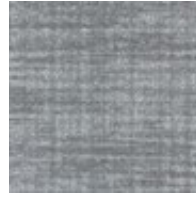
4263001 HOMESPUN



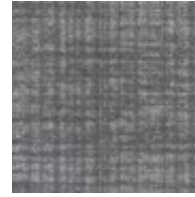
4263002 PASTORAL



4263003 ELEMENT



4263004 RUSTIC



4263005 ARCADIAN



4263006 HANDICRAFT



4263007 FUNDAMENTAL



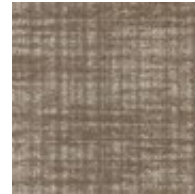
4263008 ARTISAN



4263009 PRIMITIVE



4263010 ETHEREAL



4263011 ASPECT



4263012 RURAL

## Specification

Backing	Graphlex®
Product Definition	Tufted Patterned Structured Loop Pile
Pile Material	100% Solution Dyed Nylon, Contains Recycled Content
Pile Yarn Weight	580 g/m <sup>2</sup> ± 5%
Pile Height	3.3 mm + 15% / - 10%
Total Thickness	6.5 mm ± 0.5 mm
Wear Classification	Heavy Contract (EN 1307) Class 33 / LC1
Radiant Panel	(EN ISO 9239-1) Euroclass CfI s1 (EN 13501-1)
Castor Chair	≥ 2.4 (EN 985)
Impact Sound Insulation (ΔL <sub>w</sub> )	25 dB (EN ISO 10140-3)
Sound Absorption	α <sub>w</sub> 0.20 (EN ISO 11654)
Indoor Air Quality	GUT PRODIS - 64ACFACF
Packaging	4 m <sup>2</sup>



Non Directional Brick Ashlar





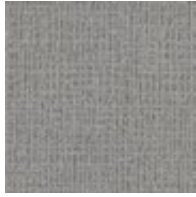
CONTEMPLATION - 4263003 ELEMENT  
INSTALLED - NON DIRECTIONAL



# Monochrome



346690 MILLSTONE



346691 PLATINUM



346692 TITANIUM



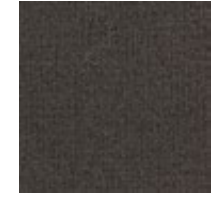
346693 FELT



346694 STORM



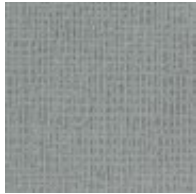
346695 SEAL



346696 CARBON



346697 BLACK



346698 SILVER



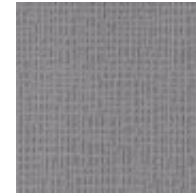
346699 SURF



346700 JADE



346701 JUNGLE



346702 MERCURY



346703 FLEMISH BLUE



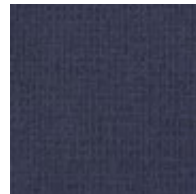
346704 PACIFIC



346705 PEACOCK



346706 LUPIN



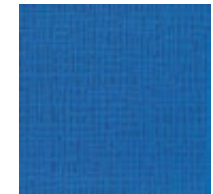
346707 FLAG BLUE



346708 LOBELIA



346709 NIGHTSHADOW



346710 BLUE



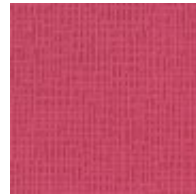
346711 IRIS



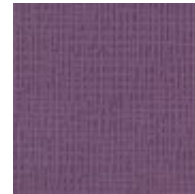
346712 DANUBE



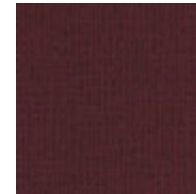
346713 ELDERBERRY



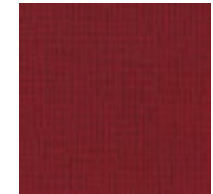
346714 VERY BERRY



346715 LILAC HAZE



346716 REDWOOD



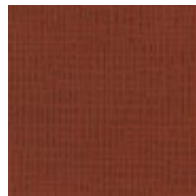
346717 DAMSON



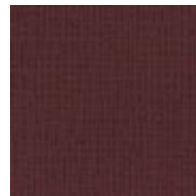
346718 ORANGE



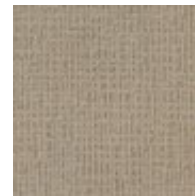
346719 GERBERA



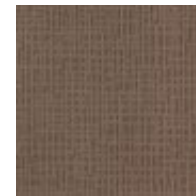
346720 TERRA FIRMA



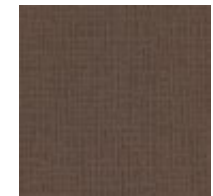
346721 WINE BERRY



346722 MALT



346723 PUTTY



346724 RHINO





MONOCHROME - 346705 PEACOCK, 346696 CARBON & 346726 CREAM  
INSTALLED: MONOLITHIC



## Monochrome



346725 COFFEE BEAN



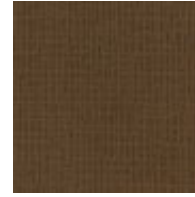
346726 CREAM



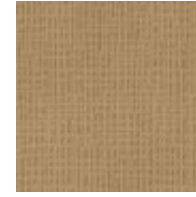
346727 CARAWAY



346728 BRIAR



346729 HAVANA



346730 BARLEY



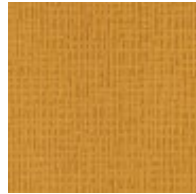
346731 CASTOR



346732 PAPYRUS



346733 BULLRUSH



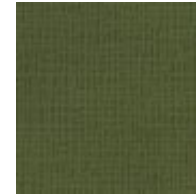
346734 SPUN GOLD



346735 DANDELION



346736 MEADOW



346737 YEW

## Specification

Backing	Graphlex®
Product Definition	Tufted Patterned Structured Loop Pile
Pile Material	100% Recycled Solution Dyed Nylon
Pile Yarn Weight	787 g/m <sup>2</sup> ± 5%
Pile Height	3.8 mm + 15% / - 10%
Total Thickness	7.7 mm ± 0.5 mm
Wear Classification	Heavy Contract (EN 1307) Class 33 / LC2
Radiant Panel	(EN ISO 9239-1) Euroclass Bfl s1 (EN 13501-1)
Castor Chair	≥ 2.4 (EN 985)
Impact Sound Insulation (ΔL <sub>w</sub> )	26 dB (EN ISO 10140-3)
Sound Absorption	α <sub>w</sub> 0.20 (EN ISO 11654)
Indoor Air Quality	GUT PRODIS - 54AA6565
Packaging	4 m <sup>2</sup>



MONOCHROME - 346690 MILLSTONE, MULTICHROME - 4262004 MILLSTONE CHROME  
INSTALLED: MONOLITHIC





## Multichrome



4262001 CREAM  
CHROME



4262002 CARAWAY  
CHROME



4262003 MALT  
CHROME



4262004 MILLSTONE  
CHROME



4262005 SILVER  
CHROME



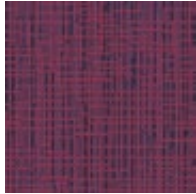
4262006 PLATINUM  
CHROME



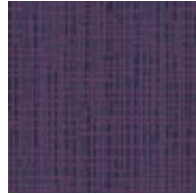
4262007 SEAL  
CHROME



4262008 BLACK  
CHROME



4262009 VERY BERRY  
CHROME



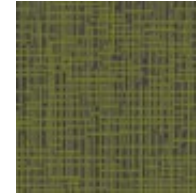
4262010 LILAC  
CHROME



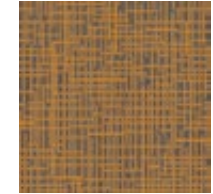
4262011 FLEMISH  
CHROME



4262012 PACIFIC  
CHROME



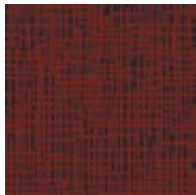
4262013 MEADOW  
CHROME



4262014 SPUN  
CHROME



4262015 ORANGE  
CHROME



4262016 GERBERA  
CHROME

## Specification

Backing	Graphlex®
Product Definition	Tufted Patterned Structured Loop Pile
Pile Material	100% Recycled Solution Dyed Nylon
Pile Yarn Weight	685 g/m <sup>2</sup> ± 5%
Pile Height	3.5 mm + 15% / - 10%
Total Thickness	7.2 mm ± 0.5 mm
Wear Classification	Heavy Contract (EN 1307) Class 33 / LC2
Radiant Panel	(EN ISO 9239-1) Euroclass CfI s1 (EN 13501-1)
Castor Chair	≥ 2.4 (EN 985)
Impact Sound Insulation (ΔL <sub>w</sub> )	26 dB (EN ISO 10140-3)
Sound Absorption	α <sub>w</sub> 0.20 (EN ISO 11654)
Indoor Air Quality	GUT PRODIS - FDOC6AD0
Packaging	4 m <sup>2</sup>





MULTICHROME - 4262012 PACIFIC CHROME  
MONOCHROME - 346704 PACIFIC  
INSTALLED: MONOLITHIC



On Line



7335001 BISCUIT



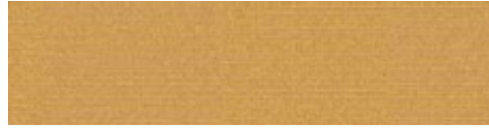
7335002 MUSHROOM



7335003 MUSTARD



7335004 SAGE



7335005 CANARY



7335006 CLOUD



7335007 PEWTER



7335008 MANDARIN



7335009 PEPPER



7335010 LIME



7335015 TOPAZ



7335016 INK



7335017 FOREST



7335018 AZURE



7335019 LAPIS



7335020 POPPY



7335021 DUNE



7335022 TITANIUM





ON LINE - 7335019 LAPIS, 7335009 PEPPER & 7335006 CLOUD  
INSTALLED - ASHLAR



## On Line



7335023 SABLE



7335024 GRANITE



7335025 PIGEON



7335026 AQUAMARINE



7335027 COBALT



7335028 MAGENTA

## Specification

Backing	Graphlex®
Product Definition	Tufted Patterned Structured Loop Pile
Pile Material	100% Recycled Solution Dyed Nylon
Pile Yarn Weight	718 g/m <sup>2</sup> ± 5%
Pile Height	3.7 mm ± 0.5 mm
Total Thickness	7.1 mm ± 0.5 mm
Wear Classification	Heavy Contract (EN 1307) Class 33 / LC2
Radiant Panel	(EN ISO 9239-1) Euroclass Cfl s1 (EN 13501-1)
Castor Chair	≥ 2.4 (EN 985)
Impact Sound Insulation (ΔL <sub>w</sub> )	26 dB (EN ISO 10140-3)
Sound Absorption	α <sub>w</sub> 0.20 (EN ISO 11654)
Indoor Air Quality	GUT PRODIS - 316BEC58
Packaging	4 m <sup>2</sup>



**100%**  
Recycled  
Nylon

ON LINE - 7335001 BISCUIT, 7335002 MUSHROOM, 7335021 DUNE  
INSTALLED: ASHLAR





## Off Line



7559001 MUSHROOM/BISCUIT



7559002 MUSHROOM/MUSTARD



7559003 SAGE/BISCUIT



7559004 SAGE/CANARY



7559005 PEWTER/CLOUD



7559006 PEWTER/MANDARIN



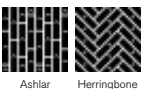
7559007 PEPPER/CLOUD



7559008 PEPPER/LIME

## Specification

Backing	Graphlex®
Product Definition	Tufted Patterned Structured Loop Pile
Pile Material	100% Recycled Solution Dyed Nylon
Pile Yarn Weight	718 g/m <sup>2</sup> ± 5%
Pile Height	3.8 mm + 15% / - 10%
Total Thickness	7.1 mm ± 0.5 mm
Wear Classification	Heavy Contract (EN 1307) Class 33 / LC2
Radiant Panel	(EN ISO 9239-1) Euroclass Cfl s1 (EN 13501-1)
Castor Chair	≥ 2.4 (EN 985)
Impact Sound Insulation (ΔL <sub>w</sub> )	26 dB (EN ISO 10140-3)
Sound Absorption	α <sub>w</sub> 0.20 (EN ISO 11654)
Indoor Air Quality	GUT PRODIS - F582EB62
Packaging	4 m <sup>2</sup>



**100%**  
Recycled  
Nylon

OFF LINE - 7559006 PEWTER/MANDARIN, 7559005 PEWTER/CLOUD ON LINE - 7335007 PEWTER  
INSTALLED - ASHLAR





How we live  
is what  
Makes us  
Real ♡







HN810



308051 FLINT



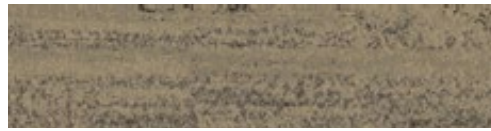
308052 NICKEL



308053 SLATE



308054 LIMESTONE



308055 PUMICE



308056 SHALE



308057 EARTH



308058 TRAVERTINE

Specification

Backing	Graphlex®
Product Definition	Tufted Patterned Structured Tip Sheared Pile
Pile Material	100% Recycled Solution Dyed Nylon
Pile Yarn Weight	1150 g/m <sup>2</sup> ± 5%
Pile Height	5.0 mm + 15% / - 10%
Total Thickness	9.6 mm ± 0.5 mm
Wear Classification	Heavy Contract (EN 1307) Class 33 / LC3
Radiant Panel	(EN ISO 9239-1) Euroclass Cfl s1 (EN 13501-1)
Castor Chair	≥ 2.4 (EN 985)
Impact Sound Insulation (ΔL <sub>w</sub> )	27 dB (EN ISO 10140-3)
Sound Absorption	α <sub>w</sub> 0.20 (EN ISO 11654)
Indoor Air Quality	GUT PRODIS - 23DDBA1E
Packaging	3 m <sup>2</sup>



**100%**  
Recycled  
Nylon

HN810 - 308054 LIMESTONE, HN840 - 308074 LIMESTONE, HN850 - 308084 LIMESTONE, HN830 - 608005 CLEMENTINE  
INSTALLED: ASHLAR





HN820



308061 FLINT



308062 NICKEL



308063 SLATE



308064 LIMESTONE



308065 PUMICE



308066 SHALE



308067 EARTH



308068 TRAVERTINE

## Specification

Backing	Graphlex®
Product Definition	Tufted Patterned Structured Cut and Loop Pile
Pile Material	100% Recycled Solution Dyed Nylon
Pile Yarn Weight	780 g/m <sup>2</sup> ± 5%
Pile Height	3.3 mm + 15% / - 10%
Total Thickness	7.2 mm ± 0.5 mm
Wear Classification	Heavy Contract (EN 1307) Class 33 / LC2
Radiant Panel	(EN ISO 9239-1) Euroclass Cfl s1 (EN 13501-1)
Castor Chair	≥ 2.4 (EN 985)
Impact Sound Insulation (ΔL <sub>w</sub> )	26 dB (EN ISO 10140-3)
Sound Absorption	α <sub>w</sub> 0.20 (EN ISO 11654)
Indoor Air Quality	GUT PRODIS - 04AEA2FD
Packaging	4 m <sup>2</sup>



**100%**  
Recycled  
Nylon



MAXIMUM OCCUPANCY  
47

HN820 • 308066 SHALE, HN840 • 308076 SHALE  
INSTALLED, DESIGN BY TILE



HN830



608001 PERSIMMON



608002 MAIZE



608003 BLACK



608004 COBALT



608005 CLEMENTINE



608006 KIWI



608007 PISTACHIO



608008 BONE

Specification

Backing	Graphlex®
Product Definition	Tufted Plain Shag Cut Pile
Pile Material	100% Recycled Solution Dyed Nylon
Pile Yarn Weight	1425 g/m <sup>2</sup> ± 5%
Pile Height	8.2 mm + 15% / - 10%
Total Thickness	11.8 mm ± 0.5 mm
Wear Classification	General Contract (EN 1307) Class 32 / LC5
Radiant Panel	(EN ISO 9239-1) Euroclass Cfl s1 (EN 13501-1)
Castor Chair	≥ 2.0
Impact Sound Insulation (ΔL <sub>w</sub> )	30 dB (EN ISO 10140-3)
Sound Absorption	α <sub>w</sub> 0.20 (EN ISO 11654)
Indoor Air Quality	GUT PRODIS - C793A286
Packaging	2.5 m <sup>2</sup>





HN870 - 308054 LIMESTONE, HN840 - 308024 LIMESTONE, HN850 - 308084 LIMESTONE, HN830 - 608006 KIWI  
INSTALLED: ASHLEA





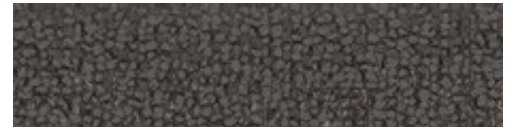
HN840



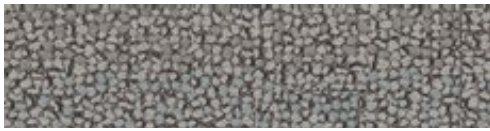
308071 FLINT



308072 NICKEL



308073 SLATE



308074 LIMESTONE



308075 PUMICE



308076 SHALE



308077 EARTH



308078 TRAVERTINE

## Specification

Backing	Graphlex®
Product Definition	Tufted Patterned Structured Loop Pile
Pile Material	100% Recycled Solution Dyed Nylon
Pile Yarn Weight	980 g/m <sup>2</sup> ± 5%
Pile Height	4.7 mm + 15% / - 10%
Total Thickness	9.6 mm ± 0.5 mm
Wear Classification	Heavy Contract (EN 1307) Class 33 / LC2
Radiant Panel	(EN ISO 9239-1) Euroclass Cfl s1 (EN 13501-1)
Castor Chair	≥ 2.4 (EN 985)
Impact Sound Insulation (ΔL <sub>w</sub> )	27 dB (EN ISO 10140-3)
Sound Absorption	α <sub>w</sub> 0.20 (EN ISO 11654)
Indoor Air Quality	GUT PRODIS - CFCEA25F
Packaging	3 m <sup>2</sup>



100%  
Recycled  
Nylon





FN840 - 308072 NICKEL  
INSTALLED: ASHLAR



HN850



308081 FLINT



308082 NICKEL



308083 SLATE



308084 LIMESTONE



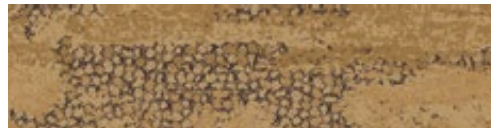
308085 PUMICE



308086 SHALE



308087 EARTH



308088 TRAVERTINE

## Specification

Backing	Graphlex®
Product Definition	Tapestry Tufted Patterned Structured Tip Sheared Pile
Pile Material	100% Recycled Solution Dyed Nylon
Pile Yarn Weight	1085 g/m <sup>2</sup> ± 5%
Pile Height	4.8 mm + 15% / - 10%
Total Thickness	9.5 mm ± 0.5 mm
Wear Classification	Heavy Contract (EN 1307) Class 33 / LC2
Radiant Panel	(EN ISO 9239-1) Euroclass Cfl s1 (EN 13501-1)
Castor Chair	≥ 2.4 (EN 985)
Impact Sound Insulation (ΔL <sub>w</sub> )	27 dB (EN ISO 10140-3)
Sound Absorption	α <sub>w</sub> 0.20 (EN ISO 11654)
Indoor Air Quality	GUT PRODIS - 3BDA6E06
Packaging	3 m <sup>2</sup>



100%  
Recycled  
Nylon





HN850 - 306088 SLATE  
INSTALLED - ASHLAR



## Touch & Tones 101



4174001 SILVER



4174002 NEUTRAL GREY



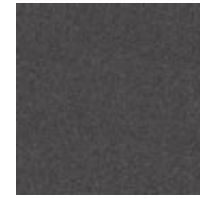
4174003 LINEN



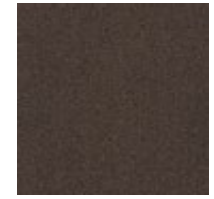
4174004 GREIGE



4174005 ELEPHANT



4174006 TAUPE



4174007 TOBACCO



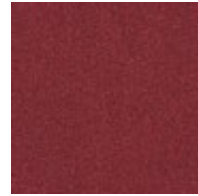
4174008 BLACK



4174009 ORANGE



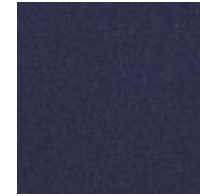
4174010 RED



4174011 BOUGAINVILLEA



4174012 GRAPE



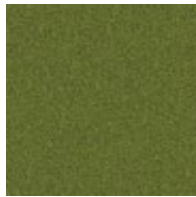
4174013 ULTRA MARINE



4174014 TURQUOISE



4174015 LEMONADE



4174016 MOSS

## Specification

Backing	Graphlex®
Product Definition	Tufted Plain Textured Loop Pile
Pile Material	100% Recycled Nylon
Pile Yarn Weight	700 g/m <sup>2</sup> ± 5%
Pile Height	3.3 mm + 15% / - 10%
Total Thickness	6.6 mm ± 0.5 mm
Wear Classification	Heavy Contract (EN 1307) Class 33 / LC2
Radiant Panel	(EN ISO 9239-1) Euroclass CfI s1 (EN 13501-1)
Castor Chair	≥ 2.4 (EN 985)
Impact Sound Insulation (ΔL <sub>w</sub> )	23 dB (EN ISO 10140-3)
Sound Absorption	α <sub>w</sub> 0.15 (EN ISO 11654)
Indoor Air Quality	GUT PRODIS - BD6DD528
Packaging	5 m <sup>2</sup>



TOUCH & TONES 101 - 4174002 NEUTRAL GREY, TOUCH & TONES 103 - 4176014 TURQUOISE  
INSTALLED: MONOLITHIC





## Touch & Tones 102



4175001 SILVER



4175002 NEUTRAL GREY



4175003 LINEN



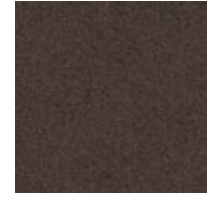
4175004 GREIGE



4175005 ELEPHANT



4175006 TAUPE



4175007 TOBACCO



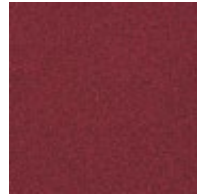
4175008 BLACK



4175009 ORANGE



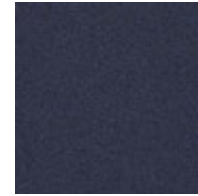
4175010 RED



4175011 BOUGAINVILLEA



4175012 GRAPE



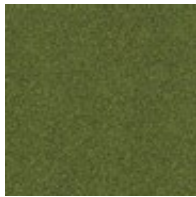
4175013 ULTRA MARINE



4175014 TURQUOISE



4175015 LEMONADE



4175016 MOSS

## Specification

Backing	Graphlex®
Product Definition	Tufted Plain Textured Loop Pile
Pile Material	100% Recycled Nylon
Pile Yarn Weight	925 g/m <sup>2</sup> ± 5%
Pile Height	4.9 mm + 15% / - 10%
Total Thickness	8.3 mm ± 0.5 mm
Wear Classification	Heavy Contract (EN 1307) Class 33 / LC3
Radiant Panel	(EN ISO 9239-1) Euroclass CfI s1 (EN 13501-1)
Castor Chair	≥ 2.4 (EN 985)
Impact Sound Insulation (ΔL <sub>w</sub> )	25 dB (EN ISO 10140-3)
Sound Absorption	α <sub>w</sub> 0.20 (EN ISO 11654)
Indoor Air Quality	GUT PRODIS - E432ADDD
Packaging	4 m <sup>2</sup>





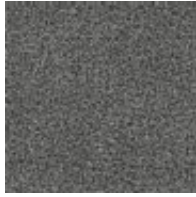
TOUCH & TONES 102 - 4175016 MOSS  
INSTALLED: MONOLITHIC



## Touch & Tones 103



4176001 SILVER



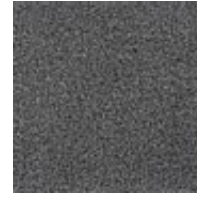
4176002 NEUTRAL GREY



4176003 LINEN



4176004 GREIGE



4176005 ELEPHANT



4176006 TAUPE



4176007 TOBACCO



4176008 BLACK



4176009 ORANGE



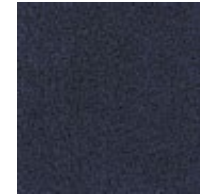
4176010 RED



4176011 BOUGAINVILLEA



4176012 GRAPE



4176013 ULTRA MARINE



4176014 TURQUOISE



4176015 LEMONADE



4176016 MOSS

## Specification

Backing	Graphlex®
Product Definition	Tufted Plain Shag Cut Pile
Pile Material	100% Nylon
Pile Yarn Weight	1314 g/m <sup>2</sup> ± 5%
Pile Height	7.2 mm + 15% / - 10%
Total Thickness	10.4 mm ± 0.5 mm
Wear Classification	Heavy Contract (EN 1307) Class 33 / LC5
Radiant Panel	(EN ISO 9239-1) Euroclass CfI s1 (EN 13501-1)
Castor Chair	≥ 2.4 (EN 985)
Impact Sound Insulation (ΔL <sub>w</sub> )	25 dB (EN ISO 10140-3)
Sound Absorption	α <sub>w</sub> 0.20 (EN ISO 11654)
Indoor Air Quality	GUT PRODIS - BFC53AA4
Packaging	3 m <sup>2</sup>



Monolithic





TOUCH & TONES 103 - 4176003 - LINEN  
INSTALLED: MONOLITHIC



## Employ Lines



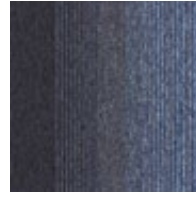
4223001 HARVEST



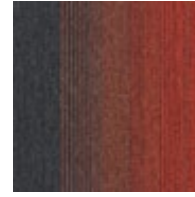
4223002 FORMATION



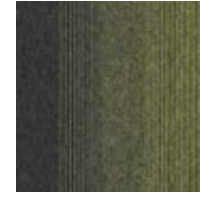
4223003 QUARRY



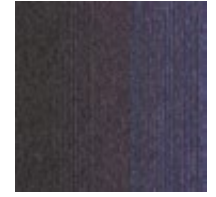
4223004 WATERFALL



4223005 SUNSET



4223006 MEADOW



4223007 IRRIDESCENT



4223008 CARIBBEAN

## Specification

Backing	Graphlex®
Product Definition	Tufted Patterned Level Loop Pile
Pile Material	100% Solution Dyed Nylon
Pile Yarn Weight	462 g/m <sup>2</sup> ± 5%
Pile Height	2.5 mm + 15% / - 10%
Total Thickness	5.8 mm ± 0.5 mm
Wear Classification	Heavy Contract (EN 1307) Class 33 / LC1
Radiant Panel	(EN ISO 9239-1) Euroclass Bfl s1 (EN 13501-1)
Castor Chair	≥ 2.4 (EN 985)
Impact Sound Insulation (ΔL <sub>w</sub> )	23 dB (EN ISO 10140-3)
Sound Absorption	α <sub>w</sub> 0.15 (EN ISO 11654)
Indoor Air Quality	GUT PRODIS - BFF1D27C
Packaging	5 m <sup>2</sup>



Non Directional Quarter Turn Monolithic



EMPLOY LINES - 4223005 SUNSET - INSTALLED; DESIGN BY TILE  
EMPLOY LOOP - 4197006 SHALE - 4197021 CLEMENTINE - INSTALLED; MONOLITHIC



## Employ Loop



4197001 RAFFIA



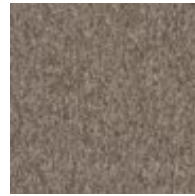
4197002 TRUFFLE



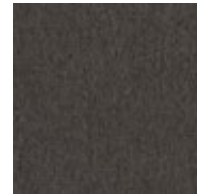
4197003 SHADOW



4197004 CARAMEL



4197005 PRALINE



4197006 SHALE



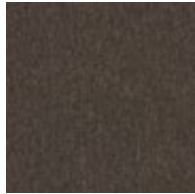
4197007 NUTMEG



4197008 FOUNTAIN



4197009 JET



4197010 RYE



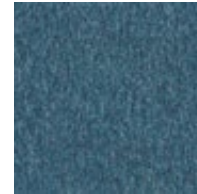
4197011 CIRRUS



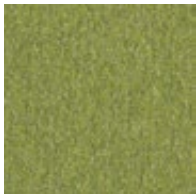
4197012 ATLANTIC



4197013 CRYSTAL



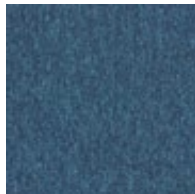
4197014 TROPICAL



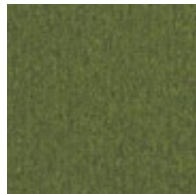
4197015 KIWI



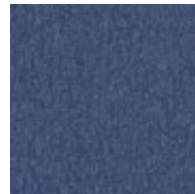
4197016 NORDIC



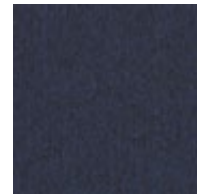
4197017 PEACOCK



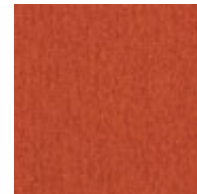
4197018 EDEN



4197019 BARING



4197020 OXFORD



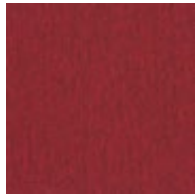
4197021 CLEMENTINE



4197022 SAPPHIRE



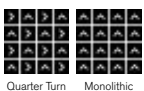
4197023 LAVENDER



4197024 SALSA

## Specification

Backing	Graphlex®
Product Definition	Tufted Level Loop Pile
Pile Material	100% Solution Dyed Nylon
Pile Yarn Weight	518 g/m <sup>2</sup> ± 5%
Pile Height	2.6 mm + 15% / - 10%
Total Thickness	5.7 mm ± 0.5 mm
Wear Classification	Heavy Contract (EN 1307) Class 33 / LC1
Radiant Panel	(EN ISO 9239-1) Euroclass Bfl s1 (EN 13501-1)
Castor Chair	≥ 2.4 (EN 985)
Impact Sound Insulation (ΔL <sub>w</sub> )	23 dB (EN ISO 10140-3)
Sound Absorption	α <sub>w</sub> 0.15 (EN ISO 11654)
Indoor Air Quality	GUT PRODIS - 085C3EBF
Packaging	5 m <sup>2</sup>



Quarter Turn Monolithic





EMPLOY LOOP - 4197023 LAVENDER  
INSTALLED: MONOLITHIC



## Employ Dimensions



4271001 VOLUME



4271002 SURFACE



4271003 CONNECT



4271004 PARALLEL



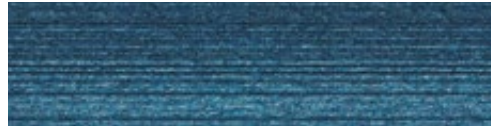
4271005 TIME



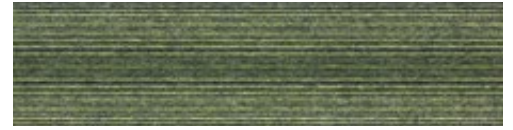
4271006 SCALE



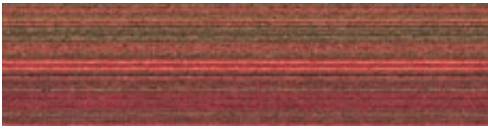
4271007 LINE



4271008 MEASURE



4271009 SEGMENT



4271010 OBJECT

## Specification

Backing	Graphlex®
Product Definition	Tufted Patterned Level Loop Pile
Pile Material	100% Solution Dyed Nylon
Pile Yarn Weight	462 g/m <sup>2</sup> ± 5%
Pile Height	2.5 mm + 15% / - 10%
Total Thickness	5.7 mm ± 0.5 mm
Wear Classification	Heavy Contract (EN 1307) Class 33 / LC1
Radiant Panel	(EN ISO 9239-1) Euroclass Bfl s1 (EN 13501-1)
Castor Chair	≥ 2.4 (EN 985)
Impact Sound Insulation (ΔL <sub>w</sub> )	23 dB (EN ISO 10140-3)
Sound Absorption	α <sub>w</sub> 0.15 (EN ISO 11654)
Indoor Air Quality	GUT PRODIS - Pending
Packaging	5 m <sup>2</sup>





EMPLOY DIMENSIONS - 4271003 CONNECT  
INSTALLED: HERRINGBONE



A photograph of a brick wall with a wooden frame containing the text "WE LIKE YOU, TOO :)". The wall is made of light-colored bricks. Above the wall, there is a dark wooden panel with green ivy growing on it. Two long, thin light fixtures are mounted on the wall above the frame. The text is in a bold, black, sans-serif font.

**WE LIKE YOU,  
TOO :)**

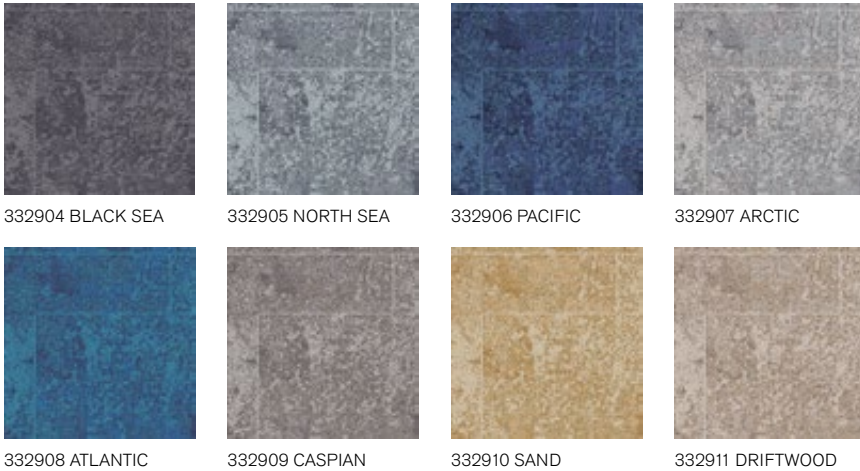






# Net Effect® Collection

## B601

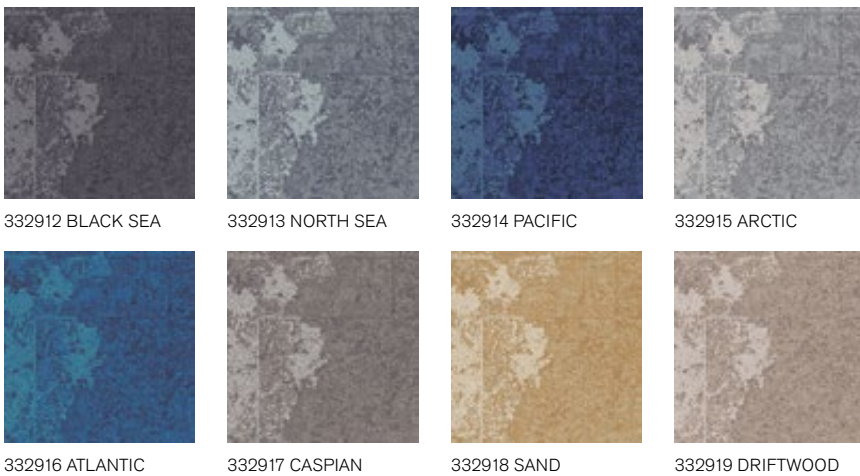


## Specification

Backing	Graphlex®
Product Definition	Tapestry Tufted Patterned Structured Loop Pile
Pile Material	100% Recycled Solution Dyed Nylon
Pile Yarn Weight	950 g/m <sup>2</sup> ± 5%
Pile Height	4.4 mm + 15% / - 10%
Total Thickness	9.5 mm ± 0.5 mm
Wear Classification	Heavy Contract (EN 1307) Class 33 / LC2
Radiant Panel	(EN ISO 9239-1) Euroclass Cfl s1 (EN 13501-1)
Castor Chair	≥ 2.4 (EN 985)
Impact Sound Insulation (ΔL <sub>w</sub> )	24 dB (EN ISO 10140-3)
Sound Absorption	α <sub>w</sub> 0.20 (EN ISO 11654)
Indoor Air Quality	GUT PRODIS - 1DEA04D6
Packaging	3 m <sup>2</sup>



## B602

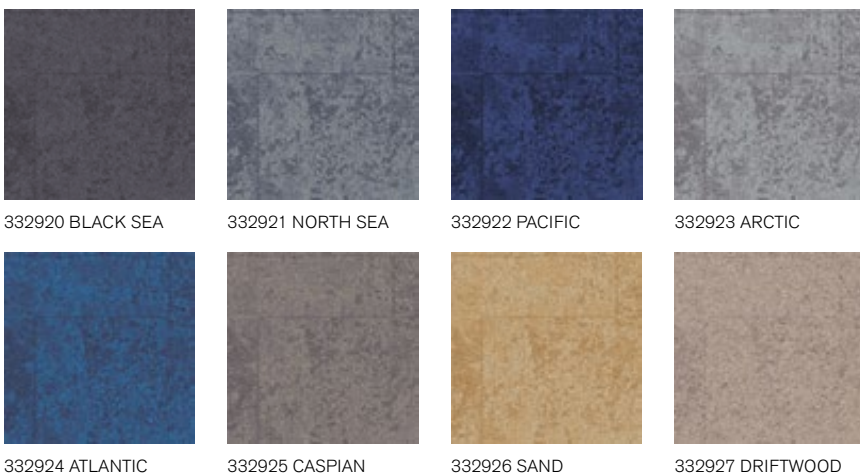


## Specification

Backing	Graphlex®
Product Definition	Tapestry Tufted Patterned Structured Loop Pile
Pile Material	100% Recycled Solution Dyed Nylon
Pile Yarn Weight	882 g/m <sup>2</sup> ± 5%
Pile Height	3.9 mm + 15% / - 10%
Total Thickness	9.2 mm ± 0.5 mm
Wear Classification	Heavy Contract (EN 1307) Class 33 / LC2
Radiant Panel	(EN ISO 9239-1) Euroclass Cfl s1 (EN 13501-1)
Castor Chair	≥ 2.4 (EN 985)
Impact Sound Insulation (ΔL <sub>w</sub> )	24 dB (EN ISO 10140-3)
Sound Absorption	α <sub>w</sub> 0.20 (EN ISO 11654)
Indoor Air Quality	GUT PRODIS - CB95E35B
Packaging	4 m <sup>2</sup>



## B603



## Specification

Backing	Graphlex®
Product Definition	Tapestry Tufted Patterned Structured Loop Pile
Pile Material	100% Recycled Solution Dyed Nylon
Pile Yarn Weight	780 g/m <sup>2</sup> ± 5%
Pile Height	2.9 mm + 15% / - 10%
Total Thickness	7.5 mm ± 0.5 mm
Wear Classification	Heavy Contract (EN 1307) Class 33 / LC1
Radiant Panel	(EN ISO 9239-1) Euroclass Cfl s1 (EN 13501-1)
Castor Chair	≥ 2.4 (EN 985)
Impact Sound Insulation (ΔL <sub>w</sub> )	24 dB (EN ISO 10140-3)
Sound Absorption	α <sub>w</sub> 0.20 (EN ISO 11654)
Indoor Air Quality	GUT PRODIS - BECF8B5D
Packaging	4 m <sup>2</sup>





B601 - 332907 ARCTIC  
B602 - 332915 ARCTIC  
B603 - 332923 ARCTIC  
INSTALLED: DESIGN BY TILE



## Near & Far Collection

### NF400



7848003 FELT



7848004 MINERAL



7848005 DRIFTWOOD



7848006 LINEN



7848007 SHALE



7848009 HEMP



7848010 WALNUT



7848011 WHEAT

## Specification

Backing	Graphlex®
Product Definition	Tufted Patterned Structured Tip Sheared Pile
Pile Material	100% Recycled Solution Dyed Nylon
Pile Yarn Weight	746 g/m <sup>2</sup> ± 5%
Pile Height	3.4 mm + 15% / - 10%
Total Thickness	6.9 mm ± 0.5 mm
Wear Classification	Heavy Contract (EN 1307) Class 33 / LC2
Radiant Panel	(EN ISO 9239-1) Euroclass Cfl s1 (EN 13501-1)
Castor Chair	≥ 2.4 (EN 985)
Impact Sound Insulation (ΔL <sub>w</sub> )	26 dB (EN ISO 10140-3)
Sound Absorption	α <sub>w</sub> 0.20 (EN ISO 11654)
Indoor Air Quality	GUT PRODIS - 3B8BE6C3
Packaging	4 m <sup>2</sup>



**100%**  
Recycled  
Nylon





NF400 - 7848003 FELT, NF401 - 7959002 FELT  
INSTALLED - ASHLAR



## Near & Far Collection

### NF401



7959002 FELT



7959001 MINERAL



7959005 DRIFTWOOD



7959004 LINEN



7959003 SHALE



7959006 HEMP



7959007 WALNUT



7959008 WHEAT

## Specification

Backing	Graphlex®
Product Definition	Tapestry Tufted Patterned Structured Tip Sheared Pile
Pile Material	100% Recycled Solution Dyed Nylon
Pile Yarn Weight	1153 g/m <sup>2</sup> ± 5%
Pile Height	6.6 mm + 15% / - 10%
Total Thickness	11.0 mm ± 0.5 mm
Wear Classification	Heavy Contract (EN 1307) Class 33 / LC4
Radiant Panel	(EN ISO 9239-1) Euroclass Cfl s1 (EN 13501-1)
Castor Chair	≥ 2.4 (EN 985)
Impact Sound Insulation (ΔL <sub>w</sub> )	27 dB (EN ISO 10140-3)
Sound Absorption	α <sub>w</sub> 0.20 (EN ISO 11654)
Indoor Air Quality	GUT PRODIS - D03BE29D
Packaging	3 m <sup>2</sup>



**100%**  
Recycled  
Nylon





NF401 - 7959004 LINEN - NF400 - 7643004 MINERAL  
INSTALLED - ASHLAR

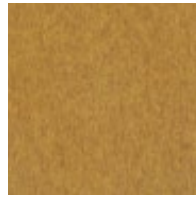
## Superflor



9008 GREY



9023 MID BROWN



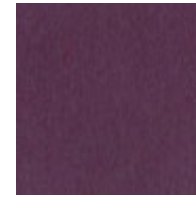
9101 YIPPEE



9102 FRUITY



9103 MAGIC



9106 ELECTRA



9155 RAVEN



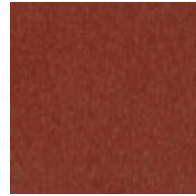
9156 OCEANUS



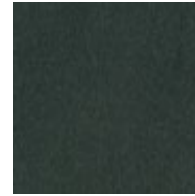
9157 LAGOON BLUE



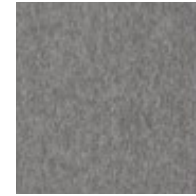
9162 PRIMAVERA



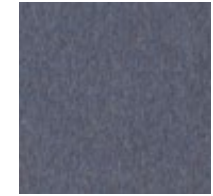
9164 PACIFIC SUNSET



9165 PINE FOREST



9169 SIBERIAN FROST



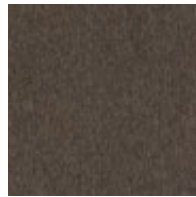
9174 ARCTIC DAWN



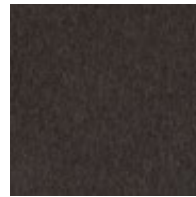
9191 SEVILLE PASSION



9194 BERBER BEIGE



9198 IRISH COFFEE



9199 BUFFALO

## Specification

Backing	Graphlar®
Product Definition	Needlefelt Plain Brushed Hair Pile
Pile Material	82.5% Nylon, 17.5% Polyester
Pile Yarn Weight	1380 g/m <sup>2</sup> ± 5%
Pile Height	4.1 mm + 15% / - 10%
Total Thickness	7.8 mm ± 0.5 mm
Wear Classification	Heavy Contract / LC3
Radiant Panel	(EN ISO 9239-1) Euroclass Cfl s1 (EN 13501-1)
Castor Chair	≥ 2.4 (EN 985)
Impact Sound Insulation (ΔL <sub>w</sub> )	24 dB (EN ISO 10140-3)
Sound Absorption	α <sub>w</sub> 0.25 (EN ISO 11654)
Indoor Air Quality	GUT PRODIS - 4B1B12FD
Packaging	5 m <sup>2</sup>



Quarter Turn



SUPERFLOR - 9008 GREY  
INSTALLED: QUARTER TURN



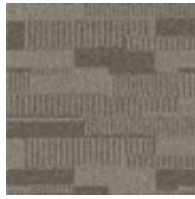
# Duet



303400 PARCHMENT



303401 PECAN



303403 DOVE



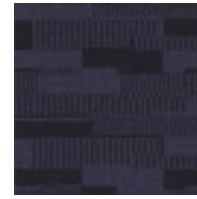
303405 LUNA



303406 MOLESKIN



303407 THUNDER



303408 LAPIS



303410 SUEDE



303413 JET



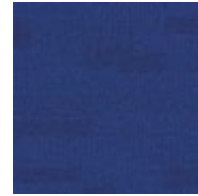
311400 CORNFIELD



311401 COCOA



311402 FLAME



311403 COBALT



311404 LIME



311405 SAFFRON



311406 AUBERGINE



311407 SHADOW



311408 BLUEBERRY

## Specification

Backing	Graphlex®
Product Definition	Tufted Patterned Structured Loop Pile
Pile Material	100% Solution Dyed Nylon, Contains Recycled Content
Pile Yarn Weight	610 g/m <sup>2</sup> ± 5%
Pile Height	3.4 mm + 15% / - 10%
Total Thickness	6.6 mm ± 0.5 mm
Wear Classification	Heavy Contract (EN 1307) Class 33 / LC2
Radiant Panel	(EN ISO 9239-1) Euroclass Bfl s1 (EN 13501-1)
Castor Chair	≥ 2.4 (EN 985)
Impact Sound Insulation (ΔL <sub>w</sub> )	26 dB (EN ISO 10140-3)
Sound Absorption	α <sub>w</sub> 0.15 (EN ISO 11654)
Indoor Air Quality	GUT PRODIS - 3250B94C
Packaging	4 m <sup>2</sup>



Non Directional Monolithic



DUET - 303403 DOVE  
INSTALLED: MONOLITHIC



## Transformation



1628068 OATMEAL



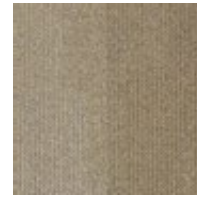
1628069 MANILLA



1628063 SHELL



1628004 MEADOW



1628019 WADI



1628064 CLAY



1628014 DESERT



1628029 PLANTATION



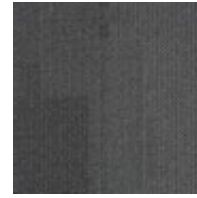
1628013 STEPPE



1628070 PARCHMENT



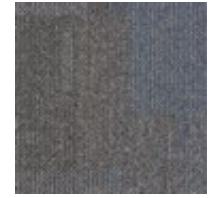
1628075 TRUFFLE



1628066 PEWTER



1628011 RIVER



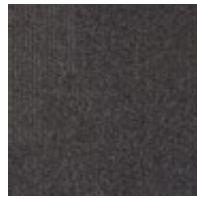
1628072 SAXON



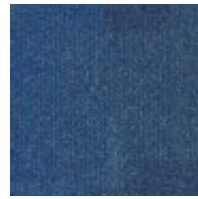
1628065 GABBRO



1628073 BARING



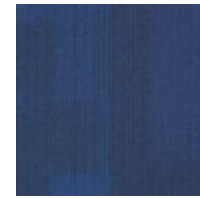
1628010 FERN



1628020 AMAZON



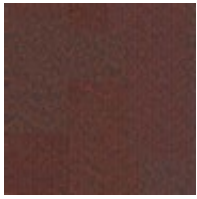
1628067 NIGHTSHADE



1628074 AZURE



1628024 LAVA



1628016 TROPICS



1628026 MOORLAND



1628025 PASTURE

## Specification

Backing	Graphlex®
Product Definition	Tufted Patterned Structured Loop Pile
Pile Material	100% Solution Dyed Nylon, Contains Recycled Content
Pile Yarn Weight	576 g/m <sup>2</sup> ± 5%
Pile Height	3.3 mm + 15% / - 10%
Total Thickness	6.5 mm ± 0.5 mm
Wear Classification	Heavy Contract (EN 1307) Class 33 / LC2
Radiant Panel	(EN ISO 9239-1) Euroclass Bfl s1 (EN 13501-1)
Castor Chair	≥ 2.4 (EN 985)
Impact Sound Insulation (ΔL <sub>w</sub> )	25 dB (EN ISO 10140-3)
Sound Absorption	α <sub>w</sub> 0.20 (EN ISO 11654)
Indoor Air Quality	GUT PRODIS - FB53AAD0
Packaging	4 m <sup>2</sup>



Non Directional



TRANSFORMATION - 1628065 GABBRO  
INSTALLED: NON DIRECTIONAL



## Heuga 725



672501 GRAPHITE



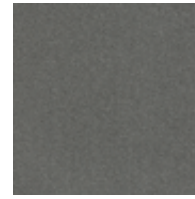
672502 PLATIN



672503 OYSTER



672504 PANTHER



672505 ELEPHANT



672506 COPRA



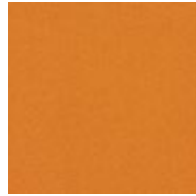
672507 REAL BLACK



672508 COAL



672509 VIPER



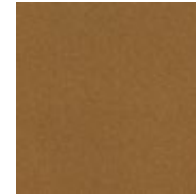
672510 TANGERINE



672511 ORANGE



672512 CHERRY



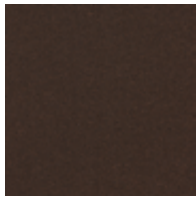
672513 COGNAC



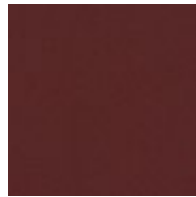
672514 RED



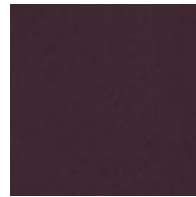
672515 BOUGAINVILLEA



672516 CHOCOLATE



672517 BORDEAUX



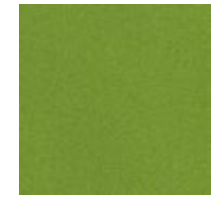
672518 VELVET



672519 FRESH COBALT



672520 TURQUOISE



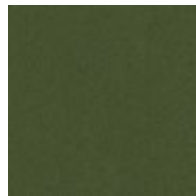
672521 SPRING



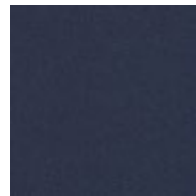
672522 OCEAN



672523 TRUE BLUE



672524 FIR



672525 NIGHTSKY



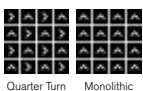
672526 MIDNIGHT



672527 REAL EMERALD

## Specification

Backing	Graphlex®
Product Definition	Tufted Plain Level Cut Pile
Pile Material	100% Recycled Solution Dyed Nylon
Pile Yarn Weight	720 g/m <sup>2</sup> ± 5%
Pile Height	3.9 mm + 15% / - 10%
Total Thickness	7.2 mm ± 0.5 mm
Wear Classification	Heavy Contract (EN 1307) Class 33 / LC2
Radiant Panel	(EN ISO 9239-1) Euroclass Bfl s1 (EN 13501-1)
Castor Chair	≥ 2.4 (EN 985)
Impact Sound Insulation (ΔL <sub>w</sub> )	25 dB (EN ISO 10140-3)
Sound Absorption	α <sub>w</sub> 0.20 (EN ISO 11654)
Indoor Air Quality	GUT PRODIS - 1021C417
Packaging	4 m <sup>2</sup>



**100%**  
Recycled  
Nylon



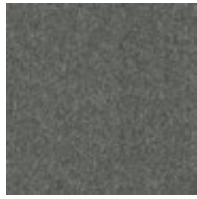
HEUGA 725 - 672505 ELEPHANT INSTALLED: MONOLITHIC  
HN830 - 608002 MIAZE INSTALLED: ASHLAR



# Heuga 580



5101 NICKEL



5102 ELEPHANT



5103 GRANITE



5104 TWILIGHT



5105 GREY



5106 OYSTER



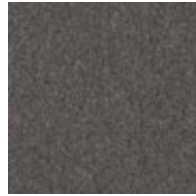
5107 ONYX



5108 BLACK



5109 QUARTZ



5110 ZIRCON



5111 EARTH



5112 EBONY



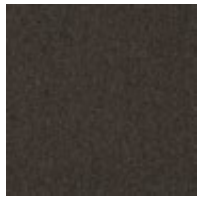
5113 FLAX



5114 TIMBER



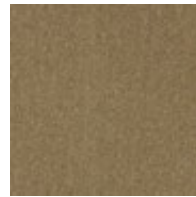
5115 CACAO



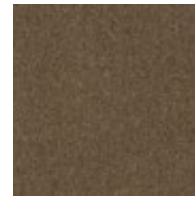
5116 WENGE



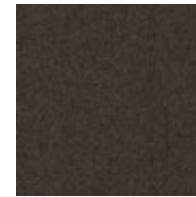
5117 ROSEWOOD



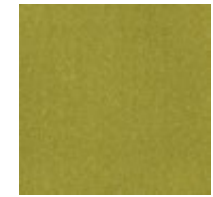
5118 SISAL



5119 TEAK



5120 CHOCOLATE



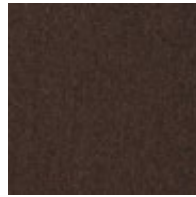
5121 LEMON GRASS



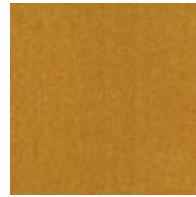
5122 GINGER



5123 MAHOGANY



5124 CHILI CHOCOLATE



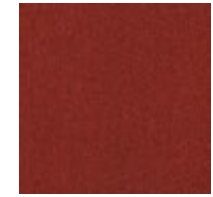
5125 CURCUMA



5126 CHILI



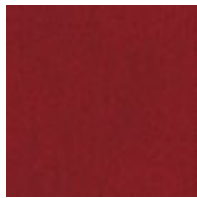
5127 TANDOORI



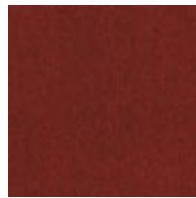
5128 OPERA



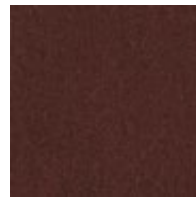
5129 MAGENTA



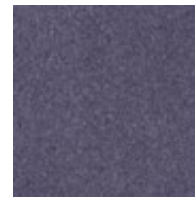
5130 FIRECRACKER



5131 MASSAI RED



5132 AUBERGINE



5133 LAVENDER



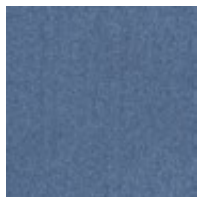
5134 VELVET



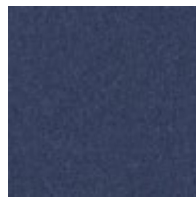
5135 MAUVE



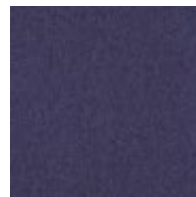
5136 BLACKCURRANT



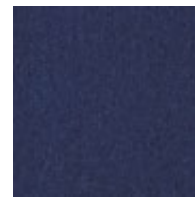
5137 SKY



5138 CORNFLOWER



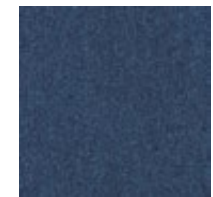
5139 OPAL BLUE



5140 LOBELIA



5141 LEAK BLUE



5142 BLUE MOON





HEUGA 580 - 5106 OYSTER  
INSTALLED: MONOLITHIC

## Heuga 580



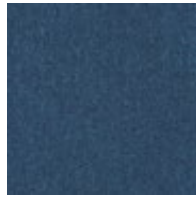
5143 BLUEBERRY



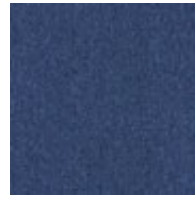
5144 ULTRA MARINE



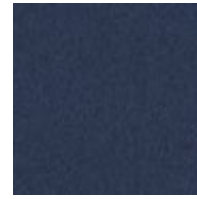
5145 SANTORIN



5146 CRETE



5147 DEEP RIVER



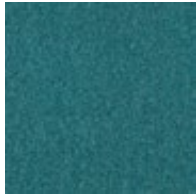
5148 INDIGO



5149 LAGOON



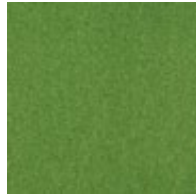
5150 CURACAO



5151 REEF



5152 ANTILLES



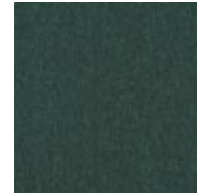
5153 APPLE



5154 POISON



5155 GREEN



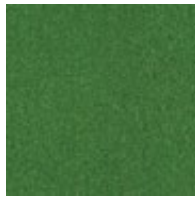
5156 WINDSOR GREEN



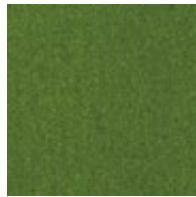
5157 LIME



5158 KIWI



5159 PALM



5160 THE SHIRE

## Specification

Backing	Graphlex®
Product Definition	Tufted Plain Level Loop Pile
Pile Material	100% Nylon
Pile Yarn Weight	580 g/m <sup>2</sup> ± 5%
Pile Height	3.1 mm + 15% / - 10%
Total Thickness	6.0 mm ± 0.5 mm
Wear Classification	Heavy Contract (EN 1307) Class 33 / LC1
Radiant Panel	(EN ISO 9239-1) Euroclass Bfl s1 (EN 13501-1)
Castor Chair	≥ 2.4 (EN 985)
Impact Sound Insulation (ΔL <sub>w</sub> )	25 dB (EN ISO 10140-3)
Sound Absorption	α <sub>w</sub> 0.20 (EN ISO 11654)
Indoor Air Quality	GUT PRODIS - DFBF9C2E
Packaging	5 m <sup>2</sup>



Quarter Turn Monolithic



HEUGA 580 - 5157 LIME & 5156 WINDSOR GREEN  
INSTALLED: MONOLITHIC











WW860



8109001 LINEN TWEED



8109002 FLANNEL TWEED



8109003 CHARCOAL TWEED



8109004 BLACK TWEED



8109005 BROWN TWEED



8109006 NATURAL TWEED



8109007 RAFFIA TWEED



8109008 SISAL TWEED

## Specification

Backing	Graphlex®
Product Definition	Tufted Patterned Level Loop Pile
Pile Material	100% Recycled Solution Dyed Nylon
Pile Yarn Weight	575 g/m <sup>2</sup> ± 5%
Pile Height	2.5 mm + 15% / - 10%
Total Thickness	5.6 mm ± 0.5 mm
Wear Classification	Heavy Contract (EN 1307) Class 33 / LC1
Radiant Panel	(EN ISO 9239-1) Euroclass Cfl s1 (EN 13501-1)
Castor Chair	≥ 2.4 (EN 985)
Impact Sound Insulation (ΔL <sub>w</sub> )	23 dB (EN ISO 10140-3)
Sound Absorption	α <sub>w</sub> 0.15 (EN ISO 11654)
Indoor Air Quality	GUT PRODIS - B89BB549
Packaging	4 m <sup>2</sup>



**100%**  
Recycled  
Nylon



WWW860 - 8109006 NATURAL TWEED & 8109007 RAFFIA TWEED  
WWW895 - 8114007 GLEN WEAVE  
INSTALLED: ASHLAR



WW865



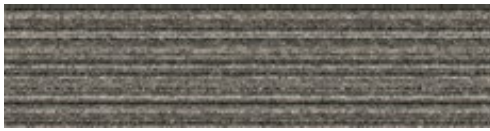
8110001 HEATHER WARP



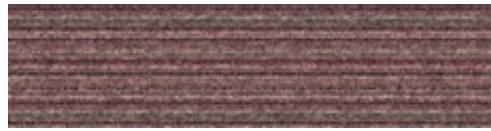
8110002 LOCH WARP



8110003 HIGHLAND WARP



8110004 MOORLAND WARP



8110005 FUCHSIA WARP



8110006 AUTUMN WARP



8110007 GLEN WARP



8110008 DALE WARP

## Specification

Backing	Graphlex®
Product Definition	Tufted Patterned Level Loop Pile
Pile Material	100% Recycled Solution Dyed Nylon
Pile Yarn Weight	575 g/m <sup>2</sup> ± 5%
Pile Height	2.5 mm + 15% / - 10%
Total Thickness	6.0 mm ± 0.5 mm
Wear Classification	Heavy Contract (EN 1307) Class 33 / LC1
Radiant Panel	(EN ISO 9239-1) Euroclass Cfl s1 (EN 13501-1)
Castor Chair	≥ 2.4 (EN 985)
Impact Sound Insulation (ΔL <sub>w</sub> )	23 dB (EN ISO 10140-3)
Sound Absorption	α <sub>w</sub> 0.15 (EN ISO 11654)
Indoor Air Quality	GUT PRODIS - BD7C4AD6
Packaging	4 m <sup>2</sup>



100%  
Recycled  
Nylon



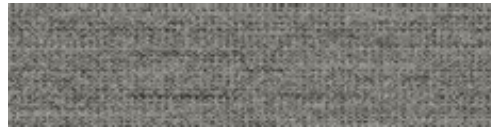


WW865 - 8110004 MOORLAND WARP  
WW890 - 8113002 FLANNEL DOBBY  
INSTALLED: ASHLAR

WW870



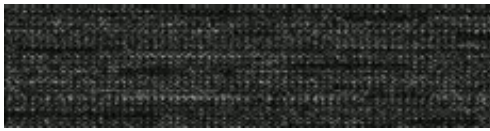
8111001 LINEN WEFT



8111002 FLANNEL WEFT



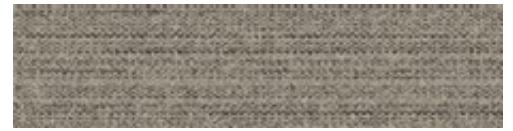
8111003 CHARCOAL WEFT



8111004 BLACK WEFT



8111005 BROWN WEFT



8111006 NATURAL WEFT



8111007 RAFFIA WEFT



8111008 SISAL WEFT

## Specification

Backing	Graphlex®
Product Definition	Tufted Patterned Structured Loop Pile
Pile Material	100% Recycled Solution Dyed Nylon
Pile Yarn Weight	780 g/m <sup>2</sup> ± 5%
Pile Height	3.1 mm + 15% / - 10%
Total Thickness	7.0 mm ± 0.5 mm
Wear Classification	Heavy Contract (EN 1307) Class 33 / LC2
Radiant Panel	(EN ISO 9239-1) Euroclass Cfl s1 (EN 13501-1)
Castor Chair	≥ 2.4 (EN 985)
Impact Sound Insulation (ΔL <sub>w</sub> )	26 dB (EN ISO 10140-3)
Sound Absorption	α <sub>w</sub> 0.20 (EN ISO 11654)
Indoor Air Quality	GUT PRODIS - 0FEFEA39
Packaging	4 m <sup>2</sup>



**100%**  
Recycled  
Nylon





WW870 - 8111002 FLANNEL WEFT, 811001 LINEN WEFT  
INSTALLED: DESIGN BY TILE

WW880



8112001 LINEN LOOM



8112002 FLANNEL LOOM



8112003 CHARCOAL LOOM



8112004 BLACK LOOM



8112005 BROWN LOOM



8112006 NATURAL LOOM



8112007 RAFFIA LOOM



8112008 SISAL LOOM

## Specification

Backing	Graphlex®
Product Definition	Tufted Patterned Structured Tip Sheared Pile
Pile Material	100% Recycled Solution Dyed Nylon
Pile Yarn Weight	850 g/m <sup>2</sup> ± 5%
Pile Height	4.1 mm + 15% / - 10%
Total Thickness	7.7 mm ± 0.5 mm
Wear Classification	Heavy Contract (EN 1307) Class 33 / LC2
Radiant Panel	(EN ISO 9239-1) Euroclass Cfl s1 (EN 13501-1)
Castor Chair	≥ 2.4 (EN 985)
Impact Sound Insulation (ΔL <sub>w</sub> )	26 dB (EN ISO 10140-3)
Sound Absorption	α <sub>w</sub> 0.20 (EN ISO 11654)
Indoor Air Quality	GUT PRODIS - A26BE79E
Packaging	3.5 m <sup>2</sup>



**100%**  
Recycled  
Nylon





1006880 - 8142006 NATURAL LOOM  
INSTALLED - AŞHILAR



WW890



8113001 LINEN DOBBY



8113002 FLANNEL DOBBY



8113003 CHARCOAL DOBBY



8113004 BLACK DOBBY



8113005 BROWN DOBBY



8113006 NATURAL DOBBY



8113007 RAFFIA DOBBY



8113008 SISAL DOBBY

## Specification

Backing	Graphlex®
Product Definition	Tapestry Tufted Patterned Structured Loop Pile
Pile Material	100% Recycled Solution Dyed Nylon
Pile Yarn Weight	1017 g/m <sup>2</sup> ± 5%
Pile Height	3.8 mm + 15% / - 10%
Total Thickness	8.2 mm ± 0.5 mm
Wear Classification	Heavy Contract (EN 1307) Class 33 / LC2
Radiant Panel	(EN ISO 9239-1) Euroclass Cfl s1 (EN 13501-1)
Castor Chair	≥ 2.4 (EN 985)
Impact Sound Insulation (ΔL <sub>w</sub> )	27 dB (EN ISO 10140-3)
Sound Absorption	α <sub>w</sub> 0.20 (EN ISO 11654)
Indoor Air Quality	GUT PRODIS - DD8BAE5B
Packaging	3 m <sup>2</sup>



**100%**  
Recycled  
Nylon

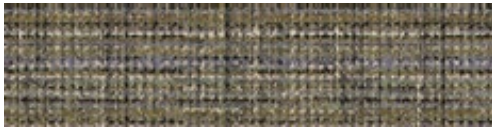




WWB90 - 8113004 BLACK DOBBY & 8113006 NATURAL DOBBY  
INSTALLED: DESIGN BY TILE



WW895



8114001 HEATHER WEAVE



8114002 LOCH WEAVE



8114003 HIGHLAND WEAVE



8114004 MOORLAND WEAVE



8114005 FUCHSIA WEAVE



8114006 AUTUMN WEAVE



8114007 GLEN WEAVE



8114008 DALE WEAVE

## Specification

Backing	Graphlex®
Product Definition	Tapestry Tufted Patterned Structured Loop Pile
Pile Material	100% Recycled Solution Dyed Nylon
Pile Yarn Weight	1017 g/m <sup>2</sup> ± 5%
Pile Height	3.8 mm + 15% / - 10%
Total Thickness	8.2 mm ± 0.5 mm
Wear Classification	Heavy Contract (EN 1307) Class 33 / LC2
Radiant Panel	(EN ISO 9239-1) Euroclass Cfl s1 (EN 13501-1)
Castor Chair	≥ 2.4 (EN 985)
Impact Sound Insulation (ΔL <sub>w</sub> )	27 dB (EN ISO 10140-3)
Sound Absorption	α <sub>w</sub> 0.20 (EN ISO 11654)
Indoor Air Quality	GUT PRODIS - ADEA3D34
Packaging	3 m <sup>2</sup>



**100%**  
Recycled  
Nylon



WW695 - 8114001 HEATHER WEAVE  
INSTALLED ASHLAR

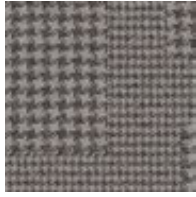
RUNE & SONS INC.  
BUILDING CONTRACTORS



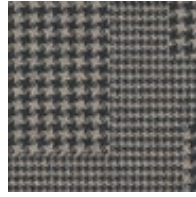
Collins Cottage



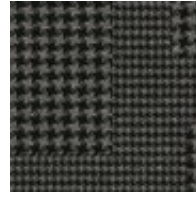
8152001 HOUND LINEN



8152002 HOUND FLANNEL



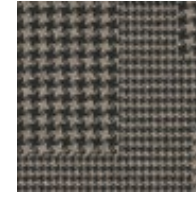
8152003 HOUND CHARCOAL



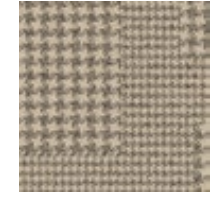
8152004 HOUND BLACK



8152005 HOUND BROWN



8152006 HOUND NATURAL



8152007 HOUND RAFFIA



8152008 HOUND SISAL

Specification

Backing	Graphlex®
Product Definition	Tapestry Tufted Patterned Structured Loop Pile
Pile Material	100% Recycled Solution Dyed Nylon
Pile Yarn Weight	882 g/m <sup>2</sup> ± 5%
Pile Height	3.9 mm + 15% / - 10%
Total Thickness	8.2 mm ± 0.5 mm
Wear Classification	Heavy Contract (EN 1307) Class 33 / LC2
Radiant Panel	(EN ISO 9239-1) Euroclass Cfl s1 (EN 13501-1)
Castor Chair	≥ 2.4 (EN 985)
Impact Sound Insulation (ΔL <sub>w</sub> )	27 dB (EN ISO 10140-3)
Sound Absorption	α <sub>w</sub> 0.20 (EN ISO 11654)
Indoor Air Quality	GUT PRODIS - BB9691EC
Packaging	4 m <sup>2</sup>







COLLINS COTTAGE - 3152004-HOUND BLACK  
INSTALLED: QUARTER TURN

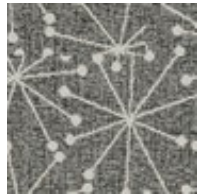


# World Woven® Collection

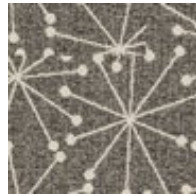
## Mod Café



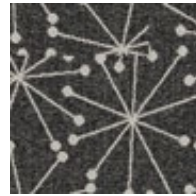
8150001 STAR LINEN



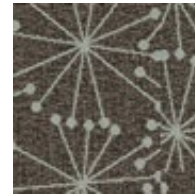
8150002 STAR FLANNEL



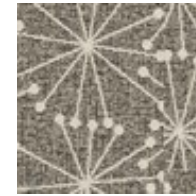
8150003 STAR CHARCOAL



8150004 STAR BLACK



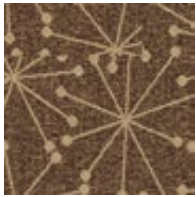
8150005 STAR BROWN



8150006 STAR NATURAL



8150007 STAR RAFFIA



8150008 STAR SISAL

## Specification

Backing	Graphlex®
Product Definition	Tapestry Tufted Patterned Structured Loop Pile
Pile Material	100% Recycled Solution Dyed Nylon
Pile Yarn Weight	984 g/m <sup>2</sup> ± 5%
Pile Height	4.1 mm + 15% / - 10%
Total Thickness	8.5 mm ± 0.5 mm
Wear Classification	Heavy Contract (EN 1307) Class 33 / LC2
Radiant Panel	(EN ISO 9239-1) Euroclass CfI s1 (EN 13501-1)
Castor Chair	≥ 2.4 (EN 985)
Impact Sound Insulation (ΔL <sub>w</sub> )	27 dB (EN ISO 10140-3)
Sound Absorption	α <sub>w</sub> 0.20 (EN ISO 11654)
Indoor Air Quality	GUT PRODIS - CB34F2B4
Packaging	4 m <sup>2</sup>







MOD CAFE - 8150006 STAR NATURAL & 8150001 STAR LINEN  
INSTALLED MONOLITHIC



Scottish Sett



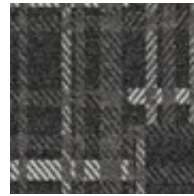
8151001 PLAID LINEN



8151002 PLAID FLANNEL



8151003 PLAID CHARCOAL



8151004 PLAID BLACK



8151005 PLAID BROWN



8151006 PLAID NATURAL



8151007 PLAID RAFFIA



8151008 PLAID SISAL

Specification

Backing	Graphlex®
Product Definition	Tapestry Tufted Patterned Structured Loop Pile
Pile Material	100% Recycled Solution Dyed Nylon
Pile Yarn Weight	984 g/m <sup>2</sup> ± 5%
Pile Height	4.3 mm + 15% / - 10%
Total Thickness	8.7 mm ± 0.5 mm
Wear Classification	Heavy Contract (EN 1307) Class 33 / LC3
Radiant Panel	(EN ISO 9239-1) Euroclass Cfl s1 (EN 13501-1)
Castor Chair	≥ 2.4 (EN 985)
Impact Sound Insulation (ΔL <sub>w</sub> )	27 dB (EN ISO 10140-3)
Sound Absorption	α <sub>w</sub> 0.20 (EN ISO 11654)
Indoor Air Quality	GUT PRODIS - 87A0EC63
Packaging	4 m <sup>2</sup>







SCOTTISH SETT - 8151006 PLAID NATURAL, WW880 - 8112006 NATURAL LOOM  
INSTALLED: DESIGN BY TILE





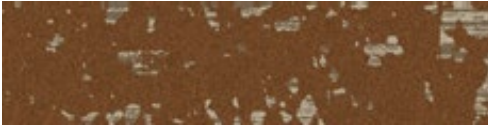
LEVEL SET - NATURAL WOODGRAINS - A00207 WASHED WHEAT INSTALLED: ASHLAR  
COMPOSURE - 4169070 FERN INSTALLED: NON DIRECTIONAL







Shading



8335001 DAYLIGHT



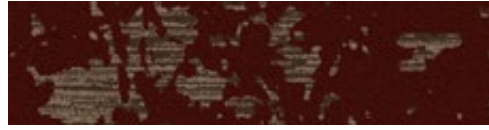
8335002 DESERT SHADOW



8335003 EVENING DUSK



8335004 MORNING MIST



8335005 FAWN



8335006 ECLIPSE

Specification

Backing	Graphlex®
Product Definition	Tapestry Tufted Patterned Structured Tip Sheared Pile
Pile Material	100% Solution Dyed Nylon, contains recycled content
Pile Yarn Weight	983 g/m <sup>2</sup> ± 5%
Pile Height	4.6 mm + 15% / - 10%
Total Thickness	11.0 mm ± 0.5 mm
Wear Classification	Heavy Contract (EN 1307) Class 33 / LC3
Radiant Panel	(EN ISO 9239-1) Euroclass Bfl s1 (EN 13501-1)
Castor Chair	≥ 2.4 (EN 985)
Impact Sound Insulation (ΔL <sub>w</sub> )	27 dB (EN ISO 10140-3)
Sound Absorption	α <sub>w</sub> 0.20 (EN ISO 11654)
Indoor Air Quality	GUT PRODIS - C0E8CDE0
Packaging	3 m <sup>2</sup>



Ashlar Herringbone



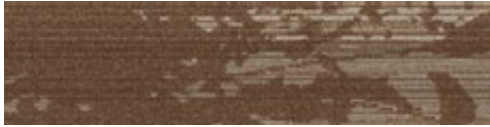


SHADING - 8335003 EVENING DUSK  
INSTALLED - ASHLAR

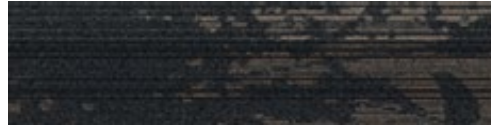


# Global Change™ Collection

## Glazing



9079001 DAYLIGHT



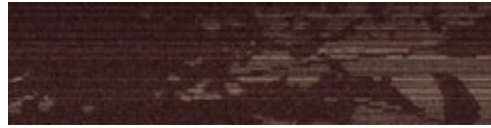
9079002 DESERT SHADOW



9079003 EVENING DUSK



9079004 MORNING MIST



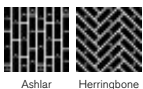
9079005 FAWN



9079006 ECLIPSE

## Specification

Backing	Graphlex®
Product Definition	Tufted Patterned Structured Loop Pile
Pile Material	100% Solution Dyed Nylon, contains recycled content
Pile Yarn Weight	644 g/m <sup>2</sup> ± 5%
Pile Height	3.9 mm + 15% / - 10%
Total Thickness	6.7 mm ± 0.5 mm
Wear Classification	Heavy Contract (EN 1307) Class 33 / LC2
Radiant Panel	(EN ISO 9239-1) Euroclass Bfl s1 (EN 13501-1)
Castor Chair	≥ 2.4 (EN 985)
Impact Sound Insulation (ΔL <sub>w</sub> )	26 dB (EN ISO 10140-3)
Sound Absorption	α <sub>w</sub> 0.20 (EN ISO 11654)
Indoor Air Quality	GUT PRODIS - DDB7B170
Packaging	4 m <sup>2</sup>



Ashlar Herringbone



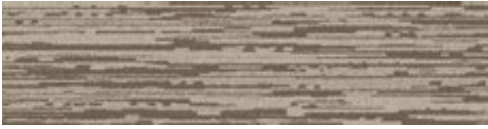


GLAZING - 9079002 DESERT SHADOW  
INSTALLED: ASHLAR



# Global Change™ Collection

## Progression I



9080001 DAYLIGHT



9080002 DESERT SHADOW



9080003 EVENING DUSK



9080004 MORNING MIST



9080005 FAWN



9080006 ECLIPSE

## Specification

Backing	Graphlex®
Product Definition	Tapestry Tufted Patterned Structured Tip Sheared Pile
Pile Material	100% Solution Dyed Nylon, contains recycled content
Pile Yarn Weight	1051 g/m <sup>2</sup> ± 5%
Pile Height	5.3 mm + 15% / - 10%
Total Thickness	9.6 mm ± 0.5 mm
Wear Classification	Heavy Contract (EN 1307) Class 33 / LC3
Radiant Panel	(EN ISO 9239-1) Euroclass Bfl s1 (EN 13501-1)
Castor Chair	≥ 2.4 (EN 985)
Impact Sound Insulation (ΔL <sub>w</sub> )	27 dB (EN ISO 10140-3)
Sound Absorption	α <sub>w</sub> 0.20 (EN ISO 11654)
Indoor Air Quality	GUT PRODIS - B7E8FDC1
Packaging	3 m <sup>2</sup>



Ashlar Herringbone





PROGRESSION I - 9080001 DAYLIGHT  
INSTALLED: ASHLAR



# Global Change™ Collection

## Progression II



9082001 DAYLIGHT



9082002 DESERT SHADOW



9082003 EVENING DUSK



9082004 MORNING MIST



9082005 FAWN



9082006 ECLIPSE

## Specification

Backing	Graphlex®
Product Definition	Tufted Patterned Structured Tip Sheared Pile
Pile Material	100% Solution Dyed Nylon, contains recycled content
Pile Yarn Weight	576 g/m <sup>2</sup> ± 5%
Pile Height	3.3 mm + 15% / - 10%
Total Thickness	7.0 mm ± 0.5 mm
Wear Classification	Heavy Contract (EN 1307) Class 33 / LC1
Radiant Panel	(EN ISO 9239-1) Euroclass Bfl s1 (EN 13501-1)
Castor Chair	≥ 2.4 (EN 985)
Impact Sound Insulation (ΔL <sub>w</sub> )	25 dB (EN ISO 10140-3)
Sound Absorption	α <sub>w</sub> 0.20 (EN ISO 11654)
Indoor Air Quality	GUT PRODIS - 303C0AB3
Packaging	4 m <sup>2</sup>



Ashlar Herringbone





PROGRESSION II - 9082001 DAYLIGHT  
INSTALLED: ASHLAR



# Global Change™ Collection

## Progression III



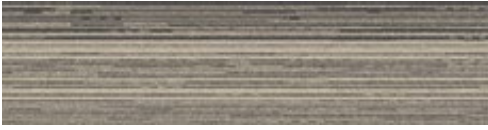
9081001 DAYLIGHT



9081002 DESERT SHADOW



9081003 EVENING DUSK



9081004 MORNING MIST



9081005 FAWN



9081006 ECLIPSE

## Specification

Backing	Graphlex®
Product Definition	Tufted Patterned Structured Loop Pile
Pile Material	100% Solution Dyed Nylon, contains recycled content
Pile Yarn Weight	644 g/m <sup>2</sup> ± 5%
Pile Height	3.6 mm + 15% / - 10%
Total Thickness	6.8 mm ± 0.5 mm
Wear Classification	Heavy Contract (EN 1307) Class 33 / LC2
Radiant Panel	(EN ISO 9239-1) Euroclass Bfl s1 (EN 13501-1)
Castor Chair	≥ 2.4 (EN 985)
Impact Sound Insulation (ΔL <sub>w</sub> )	26 dB (EN ISO 10140-3)
Sound Absorption	α <sub>w</sub> 0.20 (EN ISO 11654)
Indoor Air Quality	GUT PRODIS - 47B49E8E
Packaging	4 m <sup>2</sup>



Ashlar Herringbone





PROGRESSION III - 9081001 DAYLIGHT  
INSTALLED: ASHLAR



# Global Change™ Collection

## Ground



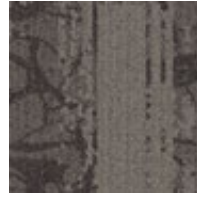
9083001 DAYLIGHT



9083002 DESERT SHADOW



9083003 EVENING DUSK



9083004 MORNING MIST



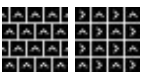
9083005 FAWN



9083006 ECLIPSE

## Specification

Backing	Graphlex®
Product Definition	Tufted Patterned Structured Loop Pile
Pile Material	100% Solution Dyed Nylon, Contains Recycled Content
Pile Yarn Weight	644 g/m <sup>2</sup> ± 5%
Pile Height	3.6 mm + 15% / - 10%
Total Thickness	7.0 mm ± 0.5 mm
Wear Classification	Heavy Contract (EN 1307) Class 33 / LC2
Radiant Panel	(EN ISO 9239-1) Euroclass Bfl s1 (EN 13501-1)
Castor Chair	≥ 2.4 (EN 985)
Impact Sound Insulation (ΔL <sub>w</sub> )	26 dB (EN ISO 10140-3)
Sound Absorption	α <sub>w</sub> 0.20 (EN ISO 11654)
Indoor Air Quality	GUT PRODIS - 9F84D59F
Packaging	4 m <sup>2</sup>



Brick Quarter Turn



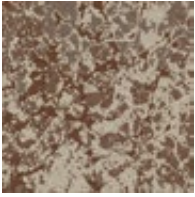


RAKU - 8334001 DAYLIGHT, GROUND - 9083001 DAYLIGHT  
INSTALLED. DESIGN BY TILE

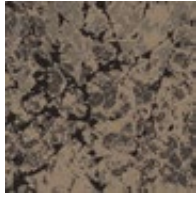


# Global Change™ Collection

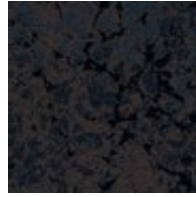
## Raku



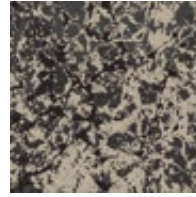
8334001 DAYLIGHT



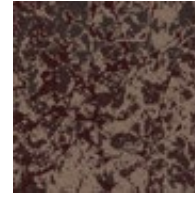
8334002 DESERT SHADOW



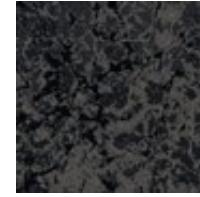
8334003 EVENING DUSK



8334004 MORNING MIST



8334005 FAWN



8334006 ECLIPSE

## Specification

Backing	Graphlex®
Product Definition	Tapestry Tufted Patterned Structured Tip Sheared Pile
Pile Material	100% Solution Dyed Nylon, Contains Recycled Content
Pile Yarn Weight	1017 g/m <sup>2</sup> ± 5%
Pile Height	4.2 mm + 15% / - 10%
Total Thickness	8.7 mm ± 0.5 mm
Wear Classification	Heavy Contract (EN 1307) Class 33 / LC3
Radiant Panel	(EN ISO 9239-1) Euroclass Bfl s1 (EN 13501-1)
Castor Chair	≥ 2.4 (EN 985)
Impact Sound Insulation (ΔL <sub>w</sub> )	27 dB (EN ISO 10140-3)
Sound Absorption	α <sub>w</sub> 0.20 (EN ISO 11654)
Indoor Air Quality	GUT PRODIS - C5AEEB88
Packaging	4 m <sup>2</sup>



Non Directional Brick Quarter Turn Ashlar Monolithic





RAKU - 8334001 DAYLIGHT - INSTALLED: NON DIRECTIONAL  
LEVEL SET NATURAL WOODGRAINS - A00204 BEECH - INSTALLED: ASHLAR



# Silver Linings Collection

## SL910



7831001 NAVY



7831002 BLACK



7831003 CHARCOAL



7831004 GRAPHITE



7831005 NICKEL



7831006 GREY



7831007 STONE



7831010 BEIGE

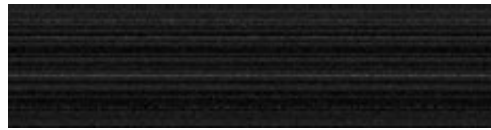


7831011 TAUPE

## SL920



7832001 NAVY LINE



7832002 BLACK LINE



7832003 CHARCOAL LINE



7832004 GRAPHITE LINE



7832005 NICKEL LINE



7832006 GREY LINE



7832007 STONE LINE



7832010 BEIGE LINE



7832011 TAUPE LINE

### Specification SL910

Backing	Graphlex®
Product Definition	Tufted Patterned Structured Loop Pile
Pile Material	100% Recycled Solution Dyed Nylon
Pile Yarn Weight	678 g/m <sup>2</sup> ± 5%
Pile Height	3.2 mm + 15% / - 10%
Total Thickness	6.7 mm ± 0.5 mm
Wear Classification	Heavy Contract (EN 1307) Class 33 / LC2
Radiant Panel	(EN ISO 9239-1) Euroclass Cfl s1 (EN 13501-1)
Castor Chair	≥ 2.4 (EN 985)
Impact Sound Insulation (ΔL <sub>w</sub> )	26 dB (EN ISO 10140-3)
Sound Absorption	α <sub>w</sub> 0.20 (EN ISO 11654)
Indoor Air Quality	GUT PRODIS - CCB6C6CD
Packaging	4 m <sup>2</sup>



### Specification SL920

Backing	Graphlex®
Product Definition	Tufted Patterned Structured Loop Pile
Pile Material	100% Recycled Solution Dyed Nylon
Pile Yarn Weight	678 g/m <sup>2</sup> ± 5%
Pile Height	3.3 mm + 15% / - 10%
Total Thickness	6.7 mm ± 0.5 mm
Wear Classification	Heavy Contract (EN 1307) Class 33 / LC2
Radiant Panel	(EN ISO 9239-1) Euroclass Cfl s1 (EN 13501-1)
Castor Chair	≥ 2.4 (EN 985)
Impact Sound Insulation (ΔL <sub>w</sub> )	26 dB (EN ISO 10140-3)
Sound Absorption	α <sub>w</sub> 0.20 (EN ISO 11654)
Indoor Air Quality	GUT PRODIS - 8AB4FDCB
Packaging	4 m <sup>2</sup>





SL910 - 7831005 NICKEL, SL920 - 7852005 NICKEL LINE & SL930 - 7833005 NICKEL FADE  
INSTALLED ASHLAR





# Silver Linings Collection

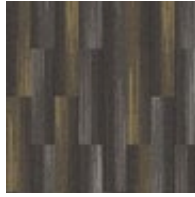
SL930 The colourline grids shown below are all in a 2m x 2m ashlar display.



7833001 NAVY FADE



7833002 BLACK FADE



7833003 CHARCOAL FADE



7833004 GRAPHITE FADE



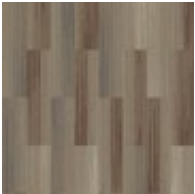
7833005 NICKEL FADE



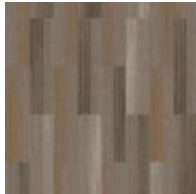
7833006 GREY FADE



7833007 STONE FADE



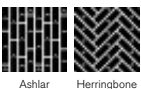
7833010 BEIGE FADE



7833011 TAUPE FADE

## Specification

Backing	Graphlex®
Product Definition	Tufted Patterned Structured Loop Pile
Pile Material	100% Recycled Solution Dyed Nylon
Pile Yarn Weight	712 g/m <sup>2</sup> ± 5%
Pile Height	3.6 mm + 15% / - 10%
Total Thickness	6.7 mm ± 0.5 mm
Wear Classification	Heavy Contract (EN 1307) Class 33 / LC2
Radiant Panel	(EN ISO 9239-1) Euroclass Cfl s1 (EN 13501-1)
Castor Chair	≥ 2.4 (EN 985)
Impact Sound Insulation (ΔL <sub>w</sub> )	26 dB (EN ISO 10140-3)
Sound Absorption	α <sub>w</sub> 0.20 (EN ISO 11654)
Indoor Air Quality	GUT PRODIS - 77D98040
Packaging	4 m <sup>2</sup>



**100%**  
Recycled  
Nylon





SL930 - 7853006 GREY FADE  
INSTALLED - DESIGN BY JIKE







has beauty  
none can see it





## Equilibrium



304205 PERSISTENCE



304207 CONTINUITY



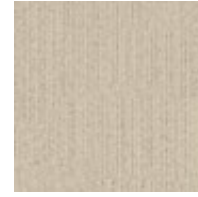
304208 CONSISTENCY



304209 EQUALITY



304281 MOBILITY



304286 EQUATION



304287 SYMMETRY



304289 SERENITY



304293 CONTENTMENT



304295 HARMONY



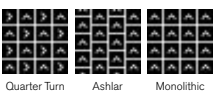
304296 MODERATION



304298 UNIFORMITY

## Specification

Backing	Graphlex®
Product Definition	Tufted Patterned Structured Tip Sheared Pile
Pile Material	100% Recycled Solution Dyed Nylon
Pile Yarn Weight	814 g/m <sup>2</sup> ± 5%
Pile Height	4.1 mm + 15% / - 10%
Total Thickness	7.5 mm ± 0.5 mm
Wear Classification	Heavy Contract (EN 1307) Class 33 / LC2
Radiant Panel	(EN ISO 9239-1) Euroclass Bfl s1 (EN 13501-1)
Castor Chair	≥ 2.4 (EN 985)
Impact Sound Insulation (ΔL <sub>w</sub> )	26 dB (EN ISO 10140-3)
Sound Absorption	α <sub>w</sub> 0.20 (EN ISO 11654)
Indoor Air Quality	GUT PRODIS - 84479CB4
Packaging	4 m <sup>2</sup>



**100%**  
Recycled  
Nylon





EQUILIBRIUM - 304286 EQUATION  
INSTALLED: ASHLAR



# Unity



1136054 EGG SHELL



1136056 FOSSIL



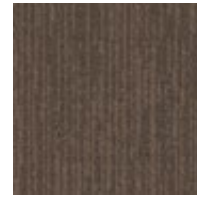
1136057 ALMOND



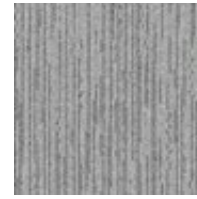
1136055 BONE



1136007 PUMICE



1136058 HUSK



1136059 PEBBLE



1136002 GRAPHITE



1136003 BOULDER



1136001 CRYSTAL



1136060 MOLTEN



1136004 CARBON



1136065 LIME



1136064 DANDELION



1136061 FUCHSIA



1136062 LAGOON



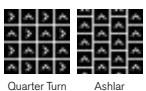
1136063 AMBER



1136066 PLUM

## Specification

Backing	Graphlex®
Product Definition	Tufted Patterned Structured Loop Pile
Pile Material	100% Solution Dyed Nylon, Contains Recycled Content
Pile Yarn Weight	590 g/m <sup>2</sup> ± 5%
Pile Height	2.7 mm + 15% / - 10%
Total Thickness	6.1 mm ± 0.5 mm
Wear Classification	Heavy Contract (EN 1307) Class 33 / LC2
Radiant Panel	(EN ISO 9239-1) Euroclass Cfl s1 (EN 13501-1)
Castor Chair	≥ 2.4 (EN 985)
Impact Sound Insulation (ΔL <sub>w</sub> )	26 dB (EN ISO 10140-3)
Sound Absorption	α <sub>w</sub> 0.20 (EN ISO 11654)
Indoor Air Quality	GUT PRODIS - D1F55D31
Packaging	4 m <sup>2</sup>



Quarter Turn Ashlar





UNITY - 1136059 PEBBLE  
INSTALLED - ASHLAR



## Walk the Plank



300301 BEECH



300302 SYCAMORE



300303 CYPRUS



300304 MAPLE



300305 POPLAR



300307 IRONWOOD

## Specification

Backing	Graphlex®
Product Definition	Tufted Patterned Structured Tip Sheared Pile
Pile Material	100% Recycled Solution Dyed Nylon
Pile Yarn Weight	861 g/m <sup>2</sup> ± 5%
Pile Height	4.2 mm + 15% / - 10%
Total Thickness	8.1 mm ± 0.5 mm
Wear Classification	Heavy Contract (EN 1307) Class 33 / LC2
Radiant Panel	(EN ISO 9239-1) Euroclass Bfl s1 (EN 13501-1)
Castor Chair	≥ 2.4 (EN 985)
Impact Sound Insulation (ΔL <sub>w</sub> )	27 dB (EN ISO 10140-3)
Sound Absorption	α <sub>w</sub> 0.20 (EN ISO 11654)
Indoor Air Quality	GUT PRODIS - 20BEEF9A
Packaging	3 m <sup>2</sup>



**100%**  
Recycled  
Nylon





WALK THE PLANK - 300301 BEECH  
INSTALLED: HERRINGBONE



## Touch of Timber



4191001 BALSAs



4191002 BAMBOO



4191003 OAK



4191004 ELM



4191005 SILVER BIRCH



4191006 ASH



4191007 MAPLE



4191008 SYCAMORE



4191009 BLUE SPRUCE



4191010 OLIVE



4191011 WALNUT



4191012 BLACKWOOD

## Specification

Backing	Graphlex®
Product Definition	Microtuft Patterned Level Loop Pile
Pile Material	100% Recycled Solution Dyed Nylon
Pile Yarn Weight	499 g/m <sup>2</sup> ± 5%
Total Thickness	5.1 mm ± 0.5 mm
Wear Classification	Heavy Contract (EN 1307) Class 33 / LC1
Radiant Panel	(EN ISO 9239-1) Euroclass Cfl s1 (EN 13501-1)
Castor Chair	≥ 2.4 (EN 985)
Impact Sound Insulation (ΔL <sub>w</sub> )	14 dB (EN ISO 10140-3)
Sound Absorption	α <sub>w</sub> 0.15 (EN ISO 11654)
Indoor Air Quality	GUT PRODIS - BCCD7633
Packaging	5 m <sup>2</sup>







TOUCH OF TIMBER - 4191009 BLUE SPRUCE  
INSTALLED: HERRINGBONE



# Yuton 104



305568 CLOUD



305569 SLATE



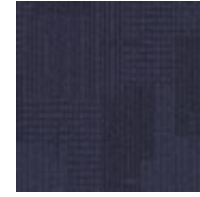
305570 THUNDER



305571 CHARCOAL



305572 WHIRL POOL



305573 PETROL



305574 EMBER



305575 CRIMSON



305576 PASTURE



305577 STONE



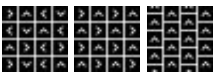
305578 MINK



305579 FERN

## Specification

Backing	Graphlex®
Product Definition	Tufted Patterned Structured Loop Pile
Pile Material	100% Nylon
Pile Yarn Weight	497 g/m <sup>2</sup> ± 5%
Pile Height	2.5 mm + 15% / - 10%
Total Thickness	6.2 mm ± 0.5 mm
Wear Classification	Heavy Contract (EN 1307) Class 33 / LC1
Radiant Panel	(EN ISO 9239-1) Euroclass Bfl s1 (EN 13501-1)
Castor Chair	≥ 2.4 (EN 985)
Impact Sound Insulation (ΔL <sub>w</sub> )	25 dB (EN ISO 10140-3)
Sound Absorption	α <sub>w</sub> 0.20 (EN ISO 11654)
Indoor Air Quality	GUT PRODIS - 3A6F77CC
Packaging	4 m <sup>2</sup>



Non Directional Quarter Turn Ashlar





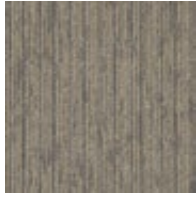
YUTON 104 - 305568 SLATE  
INSTALLED - NON DIRECTIONAL



## Yuton 105



305580 DRIFTWOOD



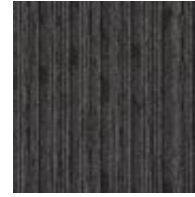
305581 TUSCANI



305582 SHADOW



305583 SLATE GREY



305584 GRAPHITE



305585 SMOKY BLACK



305586 SEPIA



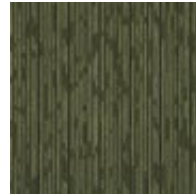
305587 BISTRE



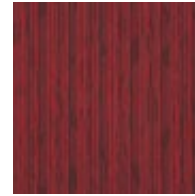
305588 SKY



305589 CERRULEAN



305590 KIWI



305591 INDIAN RED

## Specification

Backing	Graphlex®
Product Definition	Tufted Patterned Structured Loop Pile
Pile Material	100% Nylon
Pile Yarn Weight	467 g/m <sup>2</sup> ± 5%
Pile Height	2.4 mm + 15% / - 10%
Total Thickness	6.1 mm ± 0.5 mm
Wear Classification	Heavy Contract (EN 1307) Class 33 / LC1
Radiant Panel	(EN ISO 9239-1) Euroclass Bfl s1 (EN 13501-1)
Castor Chair	≥ 2.4 (EN 985)
Impact Sound Insulation (ΔL <sub>w</sub> )	25 dB (EN ISO 10140-3)
Sound Absorption	α <sub>w</sub> 0.20 (EN ISO 11654)
Indoor Air Quality	GUT PRODIS - 0C2D92CE
Packaging	4 m <sup>2</sup>



Ashlar Monolithic





YUTON 105 - 305582 SHADOW  
HEUGA 727 - 672701 PLATIN  
INSTALLED: MONOLITHIC



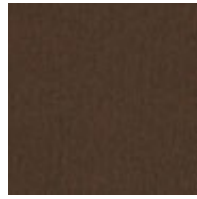
## New Horizons II



5581 WHEAT



5582 OAK



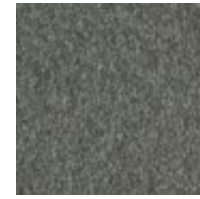
5583 NOUGAT



5584 CHAMELEON



5585 PEBBLES



5586 ASH



5587 SILVER



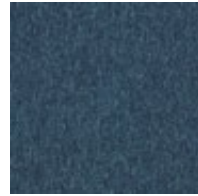
5588 PLATIN



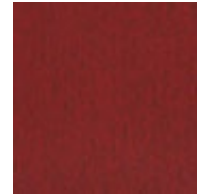
5589 CARBON



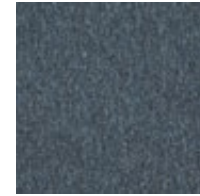
5590 SKY



5591 MARINE



5592 AMARYLLIS



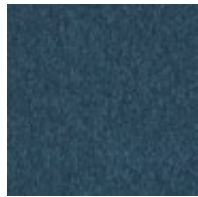
5593 STEEL



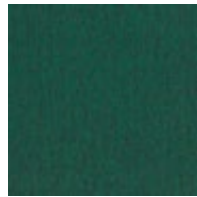
5594 COBALT



5595 NAVY



5596 PETROL



5597 PALM



5598 WINDSOR

## Specification

Backing	Graphlex®
Product Definition	Tufted Plain Level Loop Pile
Pile Material	100% Nylon
Pile Yarn Weight	550 g/m <sup>2</sup> ± 5%
Pile Height	2.3 mm + 15% / - 10%
Total Thickness	5.4 mm ± 0.5 mm
Wear Classification	Heavy Contract (EN 1307) Class 33 / LC1
Radiant Panel	(EN ISO 9239-1) Euroclass Cfl s1 (EN 13501-1)
Castor Chair	≥ 2.4 (EN 985)
Impact Sound Insulation ( $\Delta L_w$ )	23 dB (EN ISO 10140-3)
Sound Absorption	$\alpha_w$ 0.15 (EN ISO 11654)
Indoor Air Quality	GUT PRODIS - B77541F8
Packaging	5 m <sup>2</sup>



Quarter Turn Monolithic





NEW HORIZONS II - 5589 CARBON  
INSTALLED: MONOLITHIC



# Heuga 727



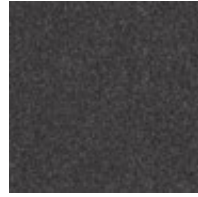
672701 PLATIN (SD)



672702 ELEPHANT (SD)



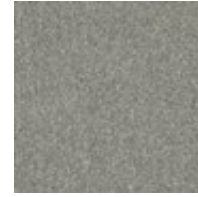
672703 GRAPHITE (SD)



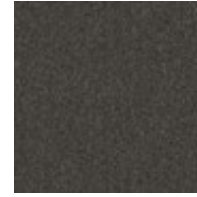
672704 COAL (SD)



672705 DUST (SD)



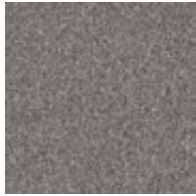
672706 PEBBLES (SD)



672707 PANTHER (SD)



672708 ONYX (SD)



672709 SILVER (SD)



672710 COPRA (SD)



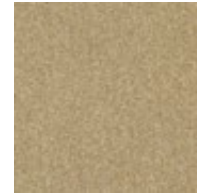
672711 COTTON (SD)



672712 NUTMEG (SD)



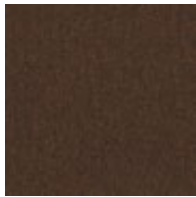
672713 OYSTER (SD)



672714 LINEN (SD)



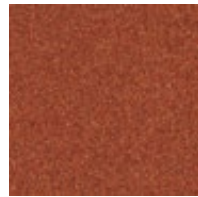
672715 CAMEL (SD)



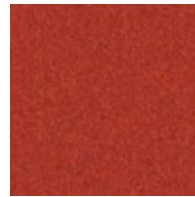
672716 MOCHA (PD)



672717 SUNFLOWER (PD)



672718 PAPRIKA (SD)



672719 HOT PEPPER (SD)



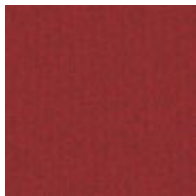
672720 CHOCOLATE (SD)



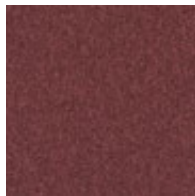
672721 CAYENNE (PD)



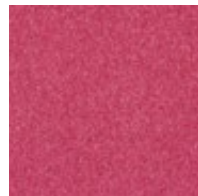
672722 OPERA (SD)



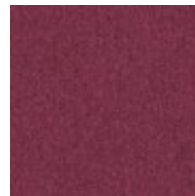
672723 AMARYLLIS (SD)



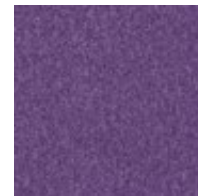
672724 MAUVE (PD)



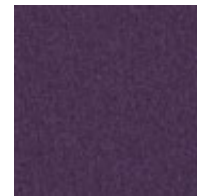
672725 PASHMINA (PD)



672726 FUCHSIA (PD)



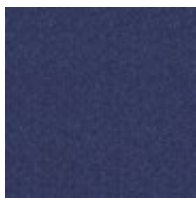
672727 HOT PINK (PD)



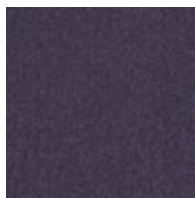
672728 DARK ORCHID (PD)



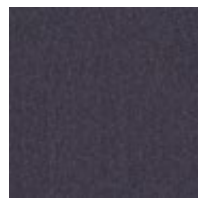
672729 LILAC (SD)



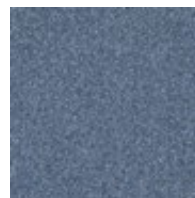
672730 MIDNIGHT (SD)



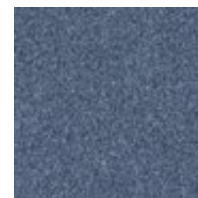
672731 BILBERRY (SD)



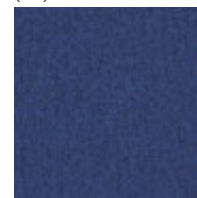
672732 BLACKCURRANT (PD)



672733 MERCURY (SD)



672734 LAVENDER (SD)



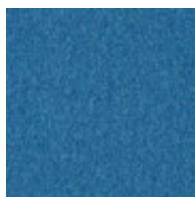
672735 LOBELIA (SD)



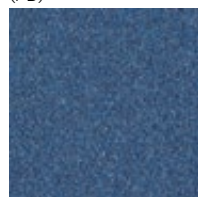
672736 BLUE RIBAND (SD)



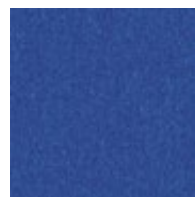
672737 LAGOON (PD)



672738 OCEAN (PD)



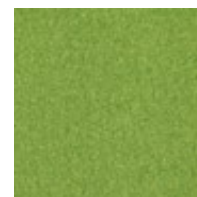
672739 COBALT (SD)



672740 REAL BLUE (PD)



672741 AEGEAN BLUE (PD)



672742 SPRING (PD)





HEUGA 727 - 672702 ELEPHANT, 672706 PEBBLES, 672701 PLATIN  
INSTALLED: MONOLITHIC



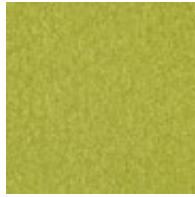
# Heuga 727



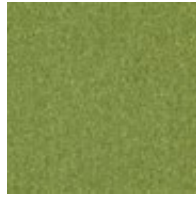
672743 GREEN (PD)



672744 EMERALD (PD)



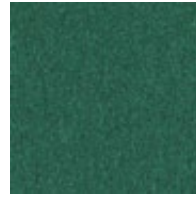
672745 LEMONADE (PD)



672746 PISTACHIO (PD)



672747 OLIVE (PD)



672748 JUNGLE (PD)

## Specification

### Piece Dyed (PD)

Backing	Graphlex®
Product Definition	Tufted Plain Level Loop Pile
Pile Material	100% Recycled Nylon
Pile Yarn Weight	580 g/m <sup>2</sup> ± 5%
Pile Height	2.6 mm + 15% / - 10%
Total Thickness	5.3 mm ± 0.5 mm
Wear Classification	Heavy Contract (EN 1307) Class 33 / LC1
Radiant Panel	(EN ISO 9239-1) Euroclass Cfl s1 (EN 13501-1)
Castor Chair	≥ 2.4 (EN 985)
Impact Sound Insulation (ΔL <sub>w</sub> )	23 dB (EN ISO 10140-3)
Sound Absorption	α <sub>w</sub> 0.15 (EN ISO 11654)
Indoor Air Quality	GUT PRODIS - 0C5650AF
Packaging	5 m <sup>2</sup>



### Solution Dyed (SD)

Backing	Graphlex®
Product Definition	Tufted Plain Level Loop Pile
Pile Material	100% Recycled Solution Dyed Nylon
Pile Yarn Weight	535 g/m <sup>2</sup> ± 5%
Pile Height	2.5 mm + 15% / - 10%
Total Thickness	5.9 mm ± 0.5 mm
Wear Classification	Heavy Contract (EN 1307) Class 33 / LC1
Radiant Panel	(EN ISO 9239-1) Euroclass Cfl s1 (EN 13501-1)
Castor Chair	≥ 2.4 (EN 985)
Impact Sound Insulation (ΔL <sub>w</sub> )	23 dB (EN ISO 10140-3)
Sound Absorption	α <sub>w</sub> 0.15 (EN ISO 11654)
Indoor Air Quality	GUT PRODIS - FDC203AA
Packaging	5 m <sup>2</sup>





HEUGA 727 - 672703 GRAPHITE, 672737 LAGOON, 672721 CAYENNE, 672742 SPRING  
INSTALLED: MONOLITHIC







COMPOSURE - 4169081 PEWTER & 4169088 ISOLATION INSTALLED: NON DIRECTIONAL  
COMPOSURE EDGE - 4274001 PEWTER/ISOLATION INSTALLED: DESIGN BY TILE  
LEVEL SET NATURAL WOODGRAINS - A00206 WINTER GREY INSTALLED: ASHLAR







## Fastforward



608120 STEEL



608121 GRANITE



608123 COFFEE



608134 VERMILLION



608135 PUMPKIN



608136 PLUM



608137 WAVE



608138 MASTIC

## Specification

Backing	Graphlex®
Product Definition	Tufted Plain Level Cut Pile
Pile Material	100% Solution Dyed Nylon, Contains Recycled Content
Pile Yarn Weight	520 g/m <sup>2</sup> ± 5%
Pile Height	1.7 mm + 15% / - 10%
Total Thickness	5.2 mm ± 0.5 mm
Wear Classification	Heavy Contract (EN 1307) Class 33 / LC1
Radiant Panel	(EN ISO 9239-1) Euroclass Bfl s1 (EN 13501-1)
Castor Chair	≥ 2.4 (EN 985)
Impact Sound Insulation (ΔL <sub>w</sub> )	20 dB (EN ISO 10140-3)
Sound Absorption	α <sub>w</sub> 0.15 (EN ISO 11654)
Indoor Air Quality	GUT PRODIS - F531B645
Packaging	5 m <sup>2</sup>



Non Directional Brick Ashlar





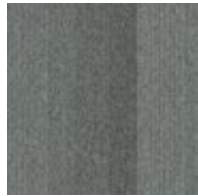
FASTFORWARD - 608120 STEEL  
INSTALLED - ASHLAR



## Straightforward II



4268001 GRANITE



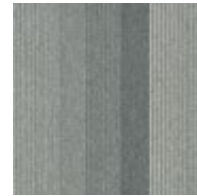
4268002 STEEL



4268003 LEAD



4268004 IRON



4268005 SLATE



4268006 COFFEE



4268007 MINK



4268008 TAUPE



4268009 DELPHINIUM



4268010 CHINA



4268011 MARIGOLD



4268012 PUMPKIN



4268013 MEADOW



4268014 ASPARAGUS



4268015 DAHLIA



4268016 FIESTA



4268017 PACIFIC



4268018 CRYSTAL



4268019 REGAL



4268020 BISCUIT

## Specification

Backing	Graphlex®
Product Definition	Microtuft Patterned Level Loop Pile
Pile Material	100% Solution Dyed Nylon derived from biomass
Pile Yarn Weight	420 g/m <sup>2</sup> ± 5%
Total Thickness	5.0 mm ± 0.5 mm
Wear Classification	Heavy Contract (EN 1307) Class 33 / LC1
Radiant Panel	(EN ISO 9239-1) Euroclass Cfl s1 (EN 13501-1)
Castor Chair	≥ 2.4 (EN 985)
Impact Sound Insulation (ΔL <sub>w</sub> )	14 dB (EN ISO 10140-3)
Sound Absorption	α <sub>w</sub> 0.15 (EN ISO 11654)
Indoor Air Quality	GUT PRODIS - Pending
Packaging	5 m <sup>2</sup>



Non Directional

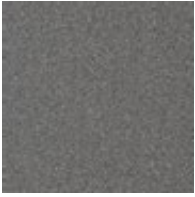


STRAIGHTFORWARD II - 4268018 CRYSTAL  
INSTALLED: NON DIRECTIONAL

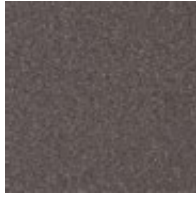




## Twist & Shine Loop



4189001 STONE LOOP



4189002 FALCON LOOP



4189003 EBONY LOOP



4189004 CLOUD LOOP



4189005 THUNDER LOOP



4189006 MIDNIGHT LOOP



4189007 SLATE LOOP



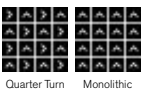
4189008 SPRUCE LOOP



4189009 ANCHOR LOOP

## Specification

Backing	Graphlex®
Product Definition	Tufted Level Loop Pile
Pile Material	100% Recycled Solution Dyed Nylon
Pile Yarn Weight	594 g/m <sup>2</sup> ± 5%
Pile Height	2.9 mm + 15% / - 10%
Total Thickness	6.3 mm ± 0.5 mm
Wear Classification	Heavy Contract (EN 1307) Class 33 / LC2
Radiant Panel	(EN ISO 9239-1) Euroclass Cfl s1 (EN 13501-1)
Castor Chair	≥ 2.4 (EN 985)
Impact Sound Insulation (ΔL <sub>w</sub> )	25 dB (EN ISO 10140-3)
Sound Absorption	α <sub>w</sub> 0.20 (EN ISO 11654)
Indoor Air Quality	GUT PRODIS - 0AD9BEFF
Packaging	5 m <sup>2</sup>



**100%**  
Recycled  
Nylon





TWIST & SHINE LOOP - 41889002 FALCON LOOP  
INSTALLED: MONOLITHIC

## Twist & Shine Micro



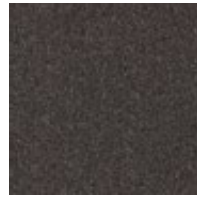
4190001 STONE MICRO



4190002 SMOKE MICRO



4190003 FALCON MICRO



4190004 EBONY MICRO



4190005 CLOUD MICRO



4190006 ANCHOR MICRO



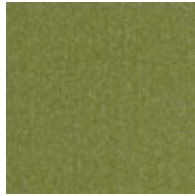
4190007 THUNDER MICRO



4190008 MIDNIGHT MICRO



4190009 SPRUCE MICRO



4190010 LIME MICRO



4190011 INDIGO MICRO



4190012 SCARLET MICRO

## Specification

Backing	Graphlex®
Product Definition	Microtuft Patterned Level Loop Pile
Pile Material	100% Recycled Solution Dyed Nylon
Pile Yarn Weight	534 g/m <sup>2</sup> ± 5%
Total Thickness	5.3 mm ± 0.5 mm
Wear Classification	Heavy Contract (EN 1307) Class 33 / LC1
Radiant Panel	(EN ISO 9239-1) Euroclass Cf1 s1 (EN 13501-1)
Castor Chair	≥ 2.4 (EN 985)
Impact Sound Insulation (ΔL <sub>w</sub> )	14 dB (EN ISO 10140-3)
Sound Absorption	α <sub>w</sub> 0.15 (EN ISO 11654)
Indoor Air Quality	GUT PRODIS - 6AF89D47
Packaging	5 m <sup>2</sup>







TWIST & SHINE MICRO - 4190010 LIME MICRO  
INSTALLED: MONOLITHIC

NS230



7939001 FENNEL



7939002 GINGER



7939003 WASABI



7939004 CHAI



7939005 GINGSENG



7939006 SESAME



7939007 DARJEELING



7939008 OOLONG

Specification

Backing	Graphlex®
Product Definition	Tapestry Tufted Patterned Structured Tip Sheared Pile
Pile Material	100% Soltution Dyed Nylon, Contains Recycled Content
Pile Yarn Weight	949 g/m <sup>2</sup> ± 5%
Pile Height	4.6 mm + 15% / - 10%
Total Thickness	10.2 mm ± 0.5 mm
Wear Classification	Heavy Contract (EN 1307) Class 33 / LC3
Radiant Panel	(EN ISO 9239-1) Euroclass Cfl s1 (EN 13501-1)
Castor Chair	≥ 2.4 (EN 985)
Impact Sound Insulation (ΔL <sub>w</sub> )	27 dB (EN ISO 10140-3)
Sound Absorption	α <sub>w</sub> 0.20 (EN ISO 11654)
Indoor Air Quality	GUT PRODIS - 958C5B09
Packaging	3 m <sup>2</sup>



Ashlar Herringbone





NS230 - 7939002 GINGER  
INSTALLED - ASHLAR



# Narratives Collection

## NS231



7938001 FENNEL



7938002 GINGER



7938003 WASABI



7938004 CHAI



7938005 GINSENG



7938006 SESAME



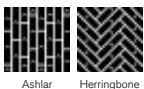
7938007 DARJEELING



7938008 OOLONG

## Specification

Backing	Graphlex®
Product Definition	Tufted Patterned Structured Loop Pile
Pile Material	100% Solution Dyed Nylon, Contains Recycled Content
Pile Yarn Weight	576 g/m <sup>2</sup> ± 5%
Pile Height	3.2 mm + 15% / - 10%
Total Thickness	6.3 mm ± 0.5 mm
Wear Classification	Heavy Contract (EN 1307) Class 33 / LC2
Radiant Panel	(EN ISO 9239-1) Euroclass Cfl s1 (EN 13501-1)
Castor Chair	≥ 2.4 (EN 985)
Impact Sound Insulation (ΔL <sub>w</sub> )	25 dB (EN ISO 10140-3)
Sound Absorption	α <sub>w</sub> 0.20 (EN ISO 11654)
Indoor Air Quality	GUT PRODIS - 0229CB40
Packaging	4 m <sup>2</sup>



Ashlar Herringbone





NS231 -7938007 DARJEELING  
INSTALLED - ASHLAR



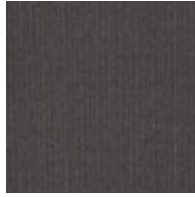
## The Scandinavian Collection



303100 BERGEN



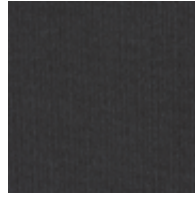
303101 HELSINKI



303102 REYKJAVIK



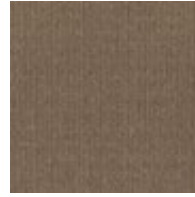
303103 STOCKHOLM



303105 MALMO



303112 COPENHAGEN



303113 NORDKAPP



303118 HEKLA



303119 VISBY



303120 TORSHAVN



303121 NARVIK



303122 KIRKENES

## Specification

Backing	Graphlex®
Product Definition	Microtuft Patterned Level Loop Pile
Pile Material	100% Solution Dyed Nylon, Contains Recycled Content
Pile Yarn Weight	400 g/m <sup>2</sup> ± 5%
Total Thickness	4.6 mm ± 0.5 mm
Wear Classification	Heavy Contract (EN 1307) Class 33 / LC1
Radiant Panel	(EN ISO 9239-1) Euroclass Cf1 s1 (EN 13501-1)
Castor Chair	≥ 2.4 (EN 985)
Impact Sound Insulation ( $\Delta L_w$ )	14 dB (EN ISO 10140-3)
Sound Absorption	$\alpha_w$ 0.15 (EN ISO 11654)
Indoor Air Quality	GUT PRODIS - 87086FF4
Packaging	5 m <sup>2</sup>



Quarter Turn











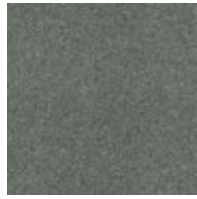




## Polichrome Stipple



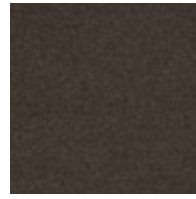
4265001 DRIZZLE



4265002 DOLPHIN



4265003 CAVIAR



4265004 JAVA



4265005 MOONROCK



4265006 SMOKY PEARL



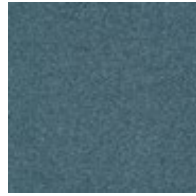
4265007 HEMP



4265008 PEAT



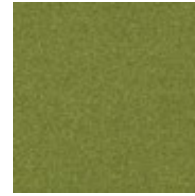
4265009 ALHAMBRA



4265010 NIAGARA



4265011 LOBELIA



4265012 HERBAL



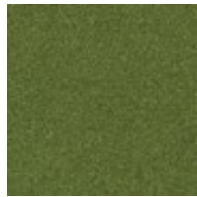
4265013 EVERGLADE



4265014 INFINITY



4265015 MAZARINE



4265016 CACTUS



4265017 LINEN



4265018 BUTTERCUP



4265019 ROSEBUD



4265020 TULIP



4265021 HAZEL



4265022 NECTARINE



4265023 LOLLIPOP



4265024 MULBERRY

## Specification

Backing	Graphlex®
Product Definition	Tufted Frieze Cut Pile
Pile Material	100% Recycled Nylon
Pile Yarn Weight	1100 g/m <sup>2</sup> ± 5%
Pile Height	4.2 mm + 15% / - 10%
Total Thickness	7.3 mm ± 0.5 mm
Wear Classification	Heavy Contract (EN 1307) Class 33 / LC4
Radiant Panel	(EN ISO 9239-1) Euroclass Bfl s1 (EN 13501-1)
Castor Chair	≥ 2.4 (EN 985)
Impact Sound Insulation (ΔL <sub>w</sub> )	27 dB (EN ISO 10140-3)
Sound Absorption	α <sub>w</sub> 0.20 (EN ISO 11654)
Indoor Air Quality	GUT PRODIS - B7BB9CDC
Packaging	4 m <sup>2</sup>





POLICHROME STIPPLE - 4265001 DRIZZLE & 4265020 TULIP  
POLICHROME SOLID - 4266020 VIOLA  
INSTALLED: DESIGN BY TILE



## Polichrome Solid



4266001 METAL



4266002 MOUSEY



4266003 CLOUDBURST



4266004 LIQUORICE



4266005 SILK GREY



4266006 CINDER



4266007 SHIITAKE



4266008 MOLE



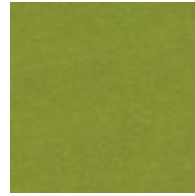
4266009 WATERFALL



4266010 DISTANT



4266011 DAPHNE



4266012 PERIDOT



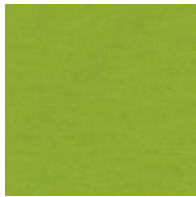
4266013 COLUMBIA



4266014 POWDERBLUE



4266015 BLUE NIGHTS



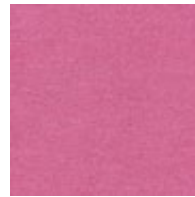
4266016 DAIQUIRI



4266017 TURTLEDOVE



4266018 MIMOSA



4266019 BUBBLEGUM



4266020 VIOLA



4266021 MARZIPAN



4266022 CARROT



4266023 GRENADINE



4266024 MALVA

## Specification

Backing	Graphlex®
Product Definition	Tufted Frieze Cut Pile
Pile Material	100% Recycled Nylon
Pile Yarn Weight	1215 g/m <sup>2</sup> ± 5%
Pile Height	4.0 mm + 15% / - 10%
Total Thickness	7.3 mm ± 0.5 mm
Wear Classification	Heavy Contract (EN 1307) Class 33 / LC4
Radiant Panel	(EN ISO 9239-1) Euroclass Bfl s1 (EN 13501-1)
Castor Chair	≥ 2.4 (EN 985)
Impact Sound Insulation ( $\Delta L_w$ )	27 dB (EN ISO 10140-3)
Sound Absorption	$\alpha_w$ 0.20 (EN ISO 11654)
Indoor Air Quality	GUT PRODIS - BE7E98D9
Packaging	4 m <sup>2</sup>





POLICHROME SOLID - 4266017 TURTLEDOVE, POLICHROME STIPPLE - 4265017 LINEN  
INSTALLED: MONOLITHIC



## Elevation III



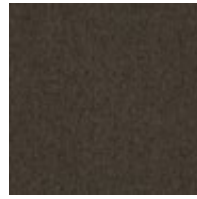
4199001 COLLETINO



4199002 BROCATELLO



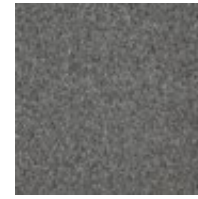
4199003 PALISSANDRA



4199004 CIOCCOLATO



4199005 FIOR DI PESCO



4199006 CEPPO DI GRE



4199007 GRIGIO NILO



4199008 PORTORO



4199009 CARRARA



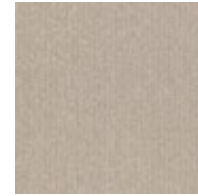
4199010 JURA



4199011 VALDEORRAS



4199012 NERO MAQUINA



4199013 BOTTICINO



4199014 ROMANO CLASSICO



4199015 CREMA LUNA



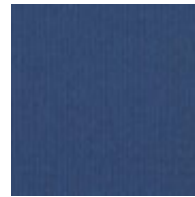
4199016 OPALE NATURALE



4199017 CIPOLLINO



4199018 AQUA MARINA



4199019 AZURO CIELO



4199020 ZIRCONA

## Specification

Backing	Graphlex®
Product Definition	Microtuft Patterned Level Loop Pile
Pile Material	100% Recycled Solution Dyed Nylon
Pile Yarn Weight	360 g/m <sup>2</sup> ± 5%
Total Thickness	4.6 mm ± 0.5 mm
Wear Classification	Heavy Contract (EN 1307) Class 33 / LC1
Radiant Panel	(EN ISO 9239-1) Euroclass Cfl s1 (EN 13501-1)
Castor Chair	≥ 2.4 (EN 985)
Impact Sound Insulation (ΔL <sub>w</sub> )	12 dB (EN ISO 10140-3)
Sound Absorption	α <sub>w</sub> 0.15 (EN ISO 11654)
Indoor Air Quality	GUT PRODIS - B2E536BF
Packaging	5 m <sup>2</sup>







ELEVATION III - 4199018 ACQUA MARINA  
INSTALLED: QUARTER TURN

## Vintage - Nebbia



343002 COURTYARD



343004 CLOCK TOWER

## Specification

---

Backing	Graphlex®
Product Definition	Tufted Cut and Loop Pile
Pile Material	100% Solution Dyed Nylon, Contains Recycled Content
Pile Yarn Weight	832 g/m <sup>2</sup> ± 5%
Pile Height	3.8 mm + 15% / - 10%
Total Thickness	8.3 mm ± 0.5 mm
Wear Classification	Heavy Contract (EN 1307) Class 33 / LC3
Radiant Panel	(EN ISO 9239-1) Euroclass CfI s1 (EN 13501-1)
Castor Chair	≥ 2.4 (EN 985)
Impact Sound Insulation (ΔL <sub>w</sub> )	26 dB (EN ISO 10140-3)
Sound Absorption	α <sub>w</sub> 0.20 (EN ISO 11654)
Indoor Air Quality	GUT PRODIS - 2B1B6B6E
Packaging	4 m <sup>2</sup>



Non Directional



VINTAGE NEBBIA - 343004 CLOCK TOWER  
INSTALLED: NON DIRECTIONAL





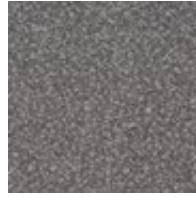
## Timeless Blend



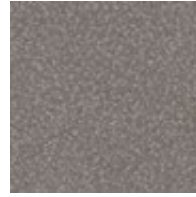
4215002 WEAVE



4215003 TWINE



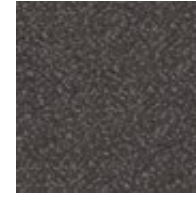
4215004 FLECK



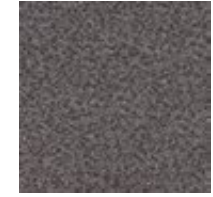
4215005 WARP



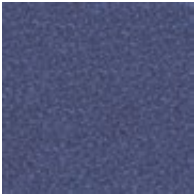
4215006 WEFT



4215007 KNOT



4215008 LOOM



4215009 TWILL

## Specification

Backing	Graphlex®
Product Definition	Tufted Patterned Structured Loop Pile
Pile Material	100% Solution Dyed Nylon
Pile Yarn Weight	539 g/m <sup>2</sup> ± 5%
Pile Height	2.8 mm + 15% / - 10%
Total Thickness	6.4 mm ± 0.5 mm
Wear Classification	Heavy Contract (EN 1307) Class 33 / LC1
Radiant Panel	(EN ISO 9239-1) Euroclass Bfl s1 (EN 13501-1)
Castor Chair	≥ 2.4 (EN 985)
Impact Sound Insulation (ΔL <sub>w</sub> )	25 dB (EN ISO 10140-3)
Sound Absorption	α <sub>w</sub> 0.20 (EN ISO 11654)
Indoor Air Quality	GUT PRODIS - 4DECBAFA
Packaging	4 m <sup>2</sup>



Monolithic





TIMELESS BLEND - 4215004 FLECK  
INSTALLED: MONOLITHIC

## Infuse



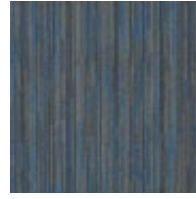
333450 ASH / LUPIN



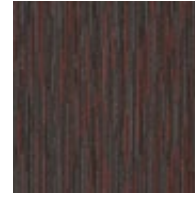
333451 ASH / ALMOND



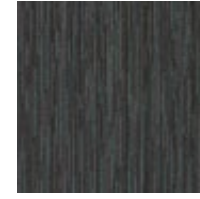
333452 CLAY / LIME



333453 CLAY / COBALT



333454 GRAPHITE / RUBY



333455 GRAPHITE / PINE



333456 BARLEY / HONEY



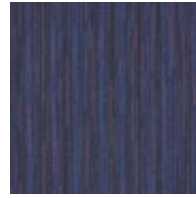
333457 BARLEY / TRUFFLE



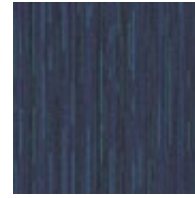
333458 MINK / DUCK EGG



333459 MINK / HERB



333460 JUBILEE / PLUM



333461 JUBILEE / JADE

## Specification

Backing	Graphlex®
Product Definition	Tufted Patterned Structured Loop Pile
Pile Material	100% Solution Dyed Nylon, Contains Recycled Content
Pile Yarn Weight	587 g/m <sup>2</sup> ± 5%
Pile Height	3.4 mm + 15% / - 10%
Total Thickness	6.6 mm ± 0.5 mm
Wear Classification	Heavy Contract (EN 1307) Class 33 / LC2
Radiant Panel	(EN ISO 9239-1) Euroclass Cfl s1 (EN 13501-1)
Castor Chair	≥ 2.4 (EN 985)
Impact Sound Insulation (ΔL <sub>w</sub> )	26 dB (EN ISO 10140-3)
Sound Absorption	α <sub>w</sub> 0.15 (EN ISO 11654)
Indoor Air Quality	GUT PRODIS - F403F8E4
Packaging	4 m <sup>2</sup>



Brick Ashlar





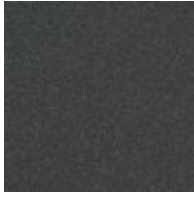
INFUSE - 333452 CLAY / LIME  
INSTALLED: ASHLAR



## Level Up



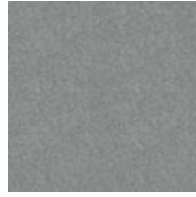
4267001 CLASSIC BLUE



4267002 ANTHRACITE



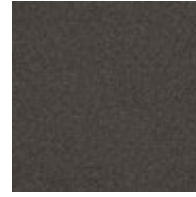
4267003 CRYSTAL



4267004 GRAVEL



4267005 OBSIDIAN



4267006 BARK



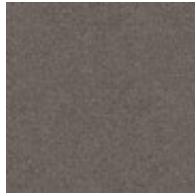
4267007 CHINCHILLA



4267008 GEMSTONE



4267009 ESPRESSO



4267010 GREIGE



4267011 GRAIN



4267012 SIENNA

## Specification

Backing	Graphlex®
Product Definition	Tufted Frieze Cut Pile
Pile Material	100% Solution Dyed Nylon
Pile Yarn Weight	1050 g/m <sup>2</sup> ± 5%
Pile Height	4.1 mm + 15% / - 10%
Total Thickness	7.7 mm ± 0.5 mm
Wear Classification	Heavy Contract (EN 1307) Class 33 / LC4
Radiant Panel	(EN ISO 9239-1) Euroclass Bfl s1 (EN 13501-1)
Castor Chair	≥ 2.4 (EN 985)
Impact Sound Insulation (ΔL <sub>w</sub> )	27 dB (EN ISO 10140-3)
Sound Absorption	α <sub>w</sub> 0.20 (EN ISO 11654)
Indoor Air Quality	GUT PRODIS - F4EDB6FD
Packaging	4 m <sup>2</sup>



Monolithic



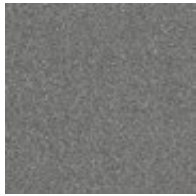


LEVEL UP - 4267006 BARK  
INSTALLED: MONOLITHIC

## Biosfera Bouclé



7181 BIANCO CRISTAL



7182 BARDIGLIO



7183 MUNDO



7184 POLARIS



7185 NERO EBANO



7186 NERO IMPALA



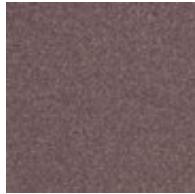
7871 PAGLIA



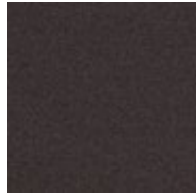
7872 ORCO BRASIL



7873 NERO ANGOLA



7875 AMBRA



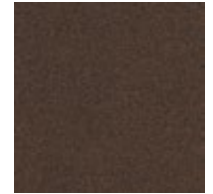
7876 AMETHYSTA



7878 AMARETTO



7879 OCCHIO DE TIGRE



7880 TRAVERTINO NOCE

## Specification

Backing	Graphlex®
Product Definition	Tufted Level Loop Pile
Pile Material	100% Recycled Solution Dyed Nylon
Pile Yarn Weight	530 g/m <sup>2</sup> ± 5%
Pile Height	2.4 mm + 15% / - 10%
Total Thickness	5.4 mm ± 0.5 mm
Wear Classification	Heavy Contract (EN 1307) Class 33 / LC1
Radiant Panel	(EN ISO 9239-1) Euroclass CfI s1 (EN 13501-1)
Castor Chair	≥ 2.4 (EN 985)
Impact Sound Insulation (ΔL <sub>w</sub> )	25 dB (EN ISO 10140-3)
Sound Absorption	α <sub>w</sub> 0.15 (EN ISO 11654)
Indoor Air Quality	GUT PRODIS - CC737ABC
Packaging	5 m <sup>2</sup>







BIOSFERA BOUCLÉ - 7871 PAGLIA  
INSTALLED: MONOLITHIC







THE KINFOLK HOME

## Luxury Living



8331 CIPRIANI



8332 SAMANNA



8333 MAROMA



8334 CARDINIA



8335 TARANGA



8336 SEDANA



8337 MELIORA



8338 HANYA



8339 BYAMEE



8340 FINNYA



8341 LATANYA



8342 MABINOI



8343 NAPASAI



8344 KAMBALA



8345 WANDINJA



8346 JIMBARAN



8347 TARANIS



8348 FIACHNA



8349 MIRIYAN



8350 AVALON



8351 ANNEA



8352 CIARAN



8353 GANAN



8354 MANOIR



8355 AMARINA



8356 LEEWANA



8357 EKALA



8358 MATARI



8359 KOLORA



8360 JERARA



8361 SAGRADO



8362 BRESALI



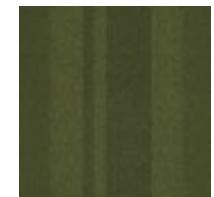
8363 APANIE



8364 MAYRAH



8365 KILLARA



8366 OLONO

## Specification

Backing	Graphlex®
Product Definition	Tufted Patterned Textured Cut Pile
Pile Material	100% Recycled Nylon
Pile Yarn Weight	1365 g/m <sup>2</sup> ± 5%
Pile Height	6.0 mm + 15% / - 10%
Total Thickness	10.0 mm ± 0.5 mm
Wear Classification	Heavy Contract (EN 1307) Class 33 / LC5
Radiant Panel	(EN ISO 9239-1) Euroclass Cfl s1 (EN 13501-1)
Castor Chair	≥ 2.4 (EN 985)
Impact Sound Insulation (ΔL <sub>w</sub> )	30 dB (EN ISO 10140-3)
Sound Absorption	α <sub>w</sub> 0.20 (EN ISO 11654)
Indoor Air Quality	GUT PRODIS - 12DD0CF4
Packaging	3 m <sup>2</sup>



100%  
Recycled  
Nylon





LUXURY LIVING - 8333 MAROMA  
INSTALLED: ASHLAR

## Current



4192004 ZINC



4192006 COTTON



4192005 PECAN



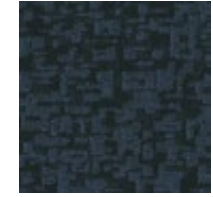
4192001 PAVEMENT



4192002 SHADOW



4192003 PEPPER



4192007 NAVY



4192008 LOBELIA

## Specification

Backing	Graphlex®
Product Definition	Tufted Patterned Structured Loop Pile
Pile Material	100% Solution Dyed Nylon
Pile Yarn Weight	531 g/m <sup>2</sup> ± 5%
Pile Height	2.7 mm + 15% / - 10%
Total Thickness	6.1 mm ± 0.5 mm
Wear Classification	Heavy Contract (EN 1307) Class 33 / LC1
Radiant Panel	(EN ISO 9239-1) Euroclass CfI s1 (EN 13501-1)
Castor Chair	≥ 2.4 (EN 985)
Impact Sound Insulation (ΔL <sub>w</sub> )	25 dB (EN ISO 10140-3)
Sound Absorption	α <sub>w</sub> 0.20 (EN ISO 11654)
Indoor Air Quality	GUT PRODIS - 49BAADDD
Packaging	4m <sup>2</sup>



Non Directional





CURRENT - 4192008 LOBELIA  
INSTALLED - NON\_DIRECTIONAL



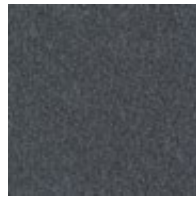
## Heuga 530



5051 ZINC



5052 SMOKE



5053 CARBON



5054 TWILIGHT



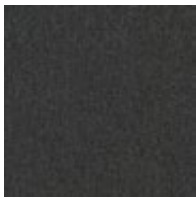
5055 SILVER



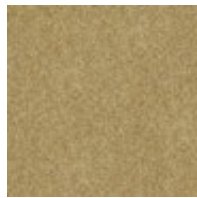
5056 DOLPHIN



5057 BASALT



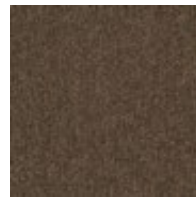
5058 BLACK



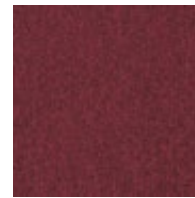
5059 SAND



5060 TAUPE



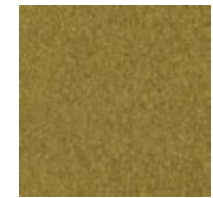
5061 CHOCOLATE



5062 VOLCANO



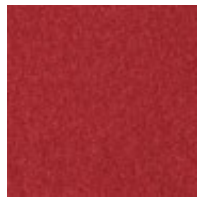
5063 GINGER



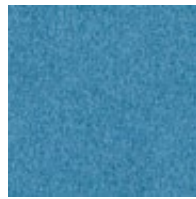
5064 GARAM MASALA



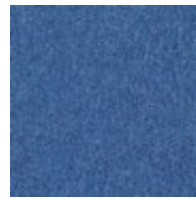
5065 ORANGE



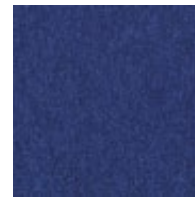
5066 OPERA



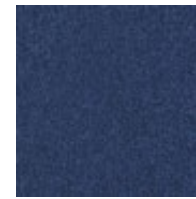
5067 SANTORIN



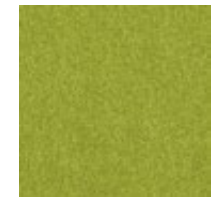
5068 COBALT



5069 LOBELIA



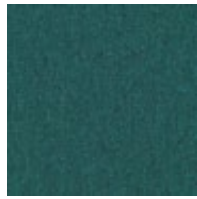
5070 BLUE MOON



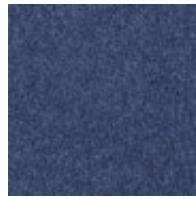
5071 LIME



5072 SYCAMORE



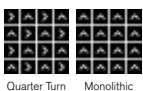
5073 IVY



5074 MIDNIGHT

## Specification

Backing	Graphlex®
Product Definition	Tufted Plain Textured Loop Pile
Pile Material	100% Nylon
Pile Yarn Weight	660 g/m <sup>2</sup> ± 5%
Pile Height	3.6 mm + 15% / - 10%
Total Thickness	6.8 mm ± 0.5 mm
Wear Classification	Heavy Contract (EN 1307) Class 33 / LC2
Radiant Panel	(EN ISO 9239-1) Euroclass Bfl s1 (EN 13501-1)
Castor Chair	≥ 2.4 (EN 985)
Impact Sound Insulation (ΔL <sub>w</sub> )	28 dB (EN ISO 10140-3)
Sound Absorption	α <sub>w</sub> 0.20 (EN ISO 11654)
Indoor Air Quality	GUT PRODIS - EF74A558
Packaging	5 m <sup>2</sup>



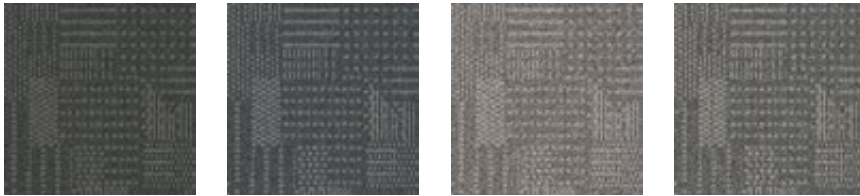


HEUGA 530 - 5074 MIDNIGHT  
INSTALLED: MONOLITHIC



# Common Theme Collection

## CT101



7426001 ONYX

7426002 SLATE

7426004 PEWTER

7426005 STEEL

## CT102



7427001 ONYX

7427002 SLATE

7427004 PEWTER

7427005 STEEL

### Specification

#### CT101

Backing	Graphlex®
Product Definition	Tufted Patterned Structured Loop Pile
Pile Material	100% Solution Dyed Nylon, Contains Recycled Content
Pile Yarn Weight	556 g/m <sup>2</sup> ± 5%
Pile Height	2.4 mm +15% / - 10%
Total Thickness	6.2 mm ± 0.5 mm
Wear Classification	Heavy Contract (EN 1307) Class 33 / LC1
Radiant Panel	(EN ISO 9239-1) Euroclass Cfl s1 (EN 13501-1)
Castor Chair	≥ 2.4 (EN 985)
Impact Sound Insulation (ΔL <sub>w</sub> )	25 dB (EN ISO 10140-3)
Sound Absorption	α <sub>w</sub> 0.20 (EN ISO 11654)
Indoor Air Quality	GUT PRODIS - 34CFAD27
Packaging	4 m <sup>2</sup>



Non Directional

### Specification

#### CT102

Backing	Graphlex®
Product Definition	Tufted Patterned Structured Tip Sheared Pile
Pile Material	100% Solution Dyed Nylon, Contains Recycled Content
Pile Yarn Weight	721 g/m <sup>2</sup> ± 5%
Pile Height	3.8 mm +15% / - 10%
Total Thickness	7.4 mm ± 0.5 mm
Wear Classification	Heavy Contract (EN 1307) Class 33 / LC2
Radiant Panel	(EN ISO 9239-1) Euroclass Cfl s1 (EN 13501-1)
Castor Chair	≥ 2.4 (EN 985)
Impact Sound Insulation (ΔL <sub>w</sub> )	26 dB (EN ISO 10140-3)
Sound Absorption	α <sub>w</sub> 0.20 (EN ISO 11654)
Indoor Air Quality	GUT PRODIS - DB69970E
Packaging	4 m <sup>2</sup>



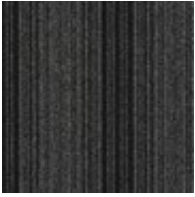
Quarter Turn Ashlar





CT102 - 7427005 STEEL  
INSTALLED: ASHLAR

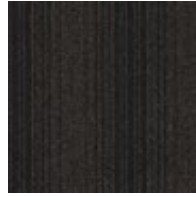
## Barricade One



4118001 GREY



4118002 ANTHRAZITE

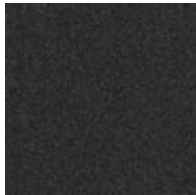


4118003 BROWN

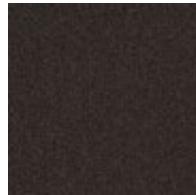
## Barricade Two



4200001 GREY



4200002 ANTHRAZITE

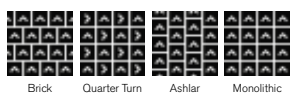


4200003 BROWN

## Specification

### Barricade One

Backing	Graphlex®
Product Definition	Tufted Patterned Textured Cut Pile
Pile Material	100% Nylon
Pile Yarn Weight	750 g/m <sup>2</sup> ± 5%
Pile Height	4.0 mm + 15% / - 10%
Total Thickness	7.7 mm ± 0.5 mm
Wear Classification	Contract General (EN 1307:32) Class 32 / LC2
Radiant Panel	(EN ISO 9239-1) Euroclass Cf1 s1 (EN 13501-1)
Castor Chair	≥ 2.0 (EN 985)
Indoor Air Quality	GUT PRODIS - 8C4A0D7C
Packaging	4 m <sup>2</sup>



## Specification

### Barricade Two

Backing	Graphlex®
Product Definition	Tufted Plain Textured Loop Pile
Pile Material	100% Recycled Solution Dyed Nylon
Pile Yarn Weight	726 g/m <sup>2</sup> ± 5%
Pile Height	3.6 mm + 15% / - 10%
Total Thickness	6.9 mm ± 0.5 mm
Wear Classification	Contract General (EN 1307:32) Class 32 / LC2
Radiant Panel	(EN ISO 9239-1) Euroclass Cf1 s1 (EN 13501-1)
Castor Chair	≥ 2.0 (EN 985)
Indoor Air Quality	GUT PRODIS - A0FEC6D0
Packaging	4 m <sup>2</sup>





BARRICADE ONE - 4118002 ANTHRACITE  
INSTALLED: BRICK



BARRICADE TWO - 4200001 GREY  
INSTALLED: MONOLITHIC







# Index



# Interface® Workbook

Product	Page	Tile Size	100% Recycled Nylon
Barricade One	232	50 x 50 cm	
Barricade Two	232	50 x 50 cm	■
Biosfera Bouclé	220	50 x 50 cm	■
Boundary Metallics <b>LVT</b>	16	25 x 100 cm	
Collect	44	50 x 50 cm	■
Collins Cottage	142	50 x 50 cm	■
Common Theme - CT101	230	50 x 50 cm	
Common Theme - CT102	230	50 x 50 cm	
Composure	30	50 x 50 cm	
Composure Edge	28	50 x 50 cm	
Conscient	42	50 x 50 cm	
Contemplation	70	50 x 50 cm	
Current	226	50 x 50 cm	
Duet	118	50 x 50 cm	
Elevation III	210	50 x 50 cm	
Employ Lines	102	50 x 50 cm	
Employ Loop	104	50 x 50 cm	
Employ Dimensions	106	25 x 100 cm	
Equal Measure - EM551	46	25 x 100 cm	■
Equal Measure - EM552	48	25 x 100 cm	■
Equal Measure - EM553	50	25 x 100 cm	■
Equilibrium	170	50 x 50 cm	■
Fastforward	190	50 x 50 cm	
Global Change - Glazing	152	25 x 100 cm	
Global Change - Ground	160	50 x 50 cm	
Global Change - Progression I	154	25 x 100 cm	
Global Change - Progression II	156	25 x 100 cm	
Global Change - Progression III	158	25 x 100 cm	
Global Change - Raku	162	50 x 50 cm	
Global Change - Shading	150	25 x 100 cm	
Heuga 530	228	50 x 50 cm	
Heuga 580	124	50 x 50 cm	
Heuga 725	122	50 x 50 cm	■
Heuga 727	184	50 x 50 cm	■
Human Connections - Flagstone	36	50 x 50 cm	■
Human Connections - Kerbstone	36	50 x 50 cm	■
Human Connections - Paver	36	50 x 50 cm	■
Human Connections - Moss	34	50 x 50 cm	■
Human Connections - Moss in Stone	34	50 x 50 cm	■
Human Connections - Rue	38	50 x 50 cm	■
Human Connections - Sett in Stone	34	50 x 50 cm	■
Human Connections - Stone Course	38	50 x 50 cm	■
Human Nature - HN810	86	25 x 100 cm	■
Human Nature - HN820	88	25 x 100 cm	■
Human Nature - HN830	90	25 x 100 cm	■
Human Nature - HN840	92	25 x 100 cm	■
Human Nature - HN850	94	25 x 100 cm	■
Infuse	216	50 x 50 cm	
Level Set Natural Stones <b>LVT</b>	22	50 x 50 cm	
Level Set Textured Stones <b>LVT</b>	24	50 x 50 cm	
Level Set Natural Woodgrains <b>LVT</b>	18	25 x 100 cm	
Level Set Textured Woodgrains <b>LVT</b>	20	25 x 100 cm	
Level Up	218	50 x 50 cm	
Luxury Living	224	50 x 50 cm	■
Mod Café	144	50 x 50 cm	■



Product	Page	Tile Size	100% Recycled Nylon
Monochrome	72	50 x 50 cm	■
Multichrome	76	50 x 50 cm	■
Narratives - NS230	198	25 x 100 cm	
Narratives - NS231	200	25 x 100 cm	
Near & Far - NF400	112	25 x 100 cm	■
Near & Far - NF401	114	25 x 100 cm	■
Net Effect - B601	110	50 x 50 cm	■
Net Effect - B602	110	50 x 50 cm	■
Net Effect - B603	110	50 x 50 cm	■
New Horizons II	182	50 x 50 cm	
Off Line	82	25 x 100 cm	■
On Line	78	25 x 100 cm	■
Polichrome Solid	208	50 x 50 cm	■
Polichrome Stipple	206	50 x 50 cm	■
Radial	32	50 x 50 cm	
Scottish Sett	146	50 x 50 cm	■
Silver Linings SL910	164	25 x 100 cm	■
Silver Linings SL920	164	25 x 100 cm	■
Silver Linings SL930	166	25 x 100 cm	■
Straightforward II	192	50 x 50 cm	
Studio Set <b>LVT</b>	14	25 x 100cm	
Superflor	116	50 x 50 cm	
The Scandinavian Collection	202	50 x 50 cm	
Timeless Blend	214	50 x 50 cm	
Touch & Tones 101	96	50 x 50 cm	■
Touch & Tones 102	98	50 x 50 cm	■
Touch & Tones 103	100	50 x 50 cm	
Touch of Timber	176	25 x 100 cm	■
Twist & Shine Loop	194	50 x 50 cm	■
Twist & Shine Micro	196	50 x 50 cm	■
Transformation	120	50 x 50 cm	
Unity	172	50 x 50 cm	
Urban Retreat - UR101	52	50 x 50 cm	■
Urban Retreat - UR102	52	50 x 50 cm	■
Urban Retreat - UR103	52	50 x 50 cm	■
Urban Retreat - UR201	54	50 x 50 cm	■
Urban Retreat - UR202	54	50 x 50 cm	■
Urban Retreat - UR203	54	50 x 50 cm	■
Urban Retreat - UR301	56	50 x 50 cm	■
Urban Retreat - UR302	56	50 x 50 cm	■
Urban Retreat - UR303	56	50 x 50 cm	■
Urban Retreat - UR501	58	25 x 100 cm	■
Vintage Nebbia	212	50 x 50 cm	
Walk The Plank	174	25 x 100 cm	■
Works - Dash	62	50 x 50 cm	
Works - Flow	66	50 x 50 cm	
Works - Geometry	68	50 x 50 cm	
Works - Hype	64	50 x 50 cm	
World Woven WW860	130	25 x 100 cm	■
World Woven WW865	132	25 x 100 cm	■
World Woven WW870	134	25 x 100 cm	■
World Woven WW880	136	25 x 100 cm	■
World Woven WW890	138	25 x 100 cm	■
World Woven WW895	140	25 x 100 cm	■
Yuton 104	178	50 x 50 cm	
Yuton 105	180	50 x 50 cm	

The Workbook 2018 is printed on **recycled paper**. By selecting this rather than a non-recycled paper, the environmental impact was reduced by :

- 15,682** kg of landfill
- 2,100** kg CO<sub>2</sub> and greenhouse gases
- 21,001** km travel in the average European car
- 612,742** litres of water
- 35,952** kWh of energy
- 25,485** kg of wood



All the pictures in Workbook 2018 are represented as accurately as the printing process will allow. Please order a sample tile to check the exact colour of our product before ordering.

Interface European Manufacturing BV reserve the right to change or modify specifications. Please see website for latest specifications.

# GET IN TOUCH

## Europe, Middle East & Africa

AE	+971 (0)4 8189077	NL	+31 33 277 5555
AT	+43 1 8102839	ME	+381 11 414 92 00
BA	+387 33 522 534	MK	+389 2 323 01 89
BE	+32 2 475 27 27	NO	+47 23 12 01 70
BG	+359 2 808 303	PL	+48 500 151 101
BY	+375 17 226 75 14	PT	+351 217 122 740
CH	+41 44 913 68 00	RO	+40 21 317 12
CZ	+42 0 233 087 111		40/42/43/44
DE	+49 2151 3718 0	RS	+381 11 414 92 00
DK	+45 33 79 70 55	RU	+7 495 234 57 27
ES	+34 932 418 750	SA	+966 500615423
EG	+(202) 3760 7818	SE	08-241 230
FR	+33 1 58 10 20 20	SK	+421 911 104 073
GR	+30 211 2120820	SI	+386 1 520 0500
HR	+385 14 62 30 63		+386 8 20 54 007
HU	+36 1 349 6545	TR	+90 212 365 5506
IE	+353 1 679 8466	UA	+38(044)238 27 67
IL	+972 546602102	UK	+44 (0)1274 698503
IT	+39 02 890 93678	ZA	+27 11 6083324
KZ	+7 495 234 57 27		



**Mission Zero:**  
our promise to eliminate any negative impact our company may have on the environment by the year 2020.



[www.interface.com](http://www.interface.com)





